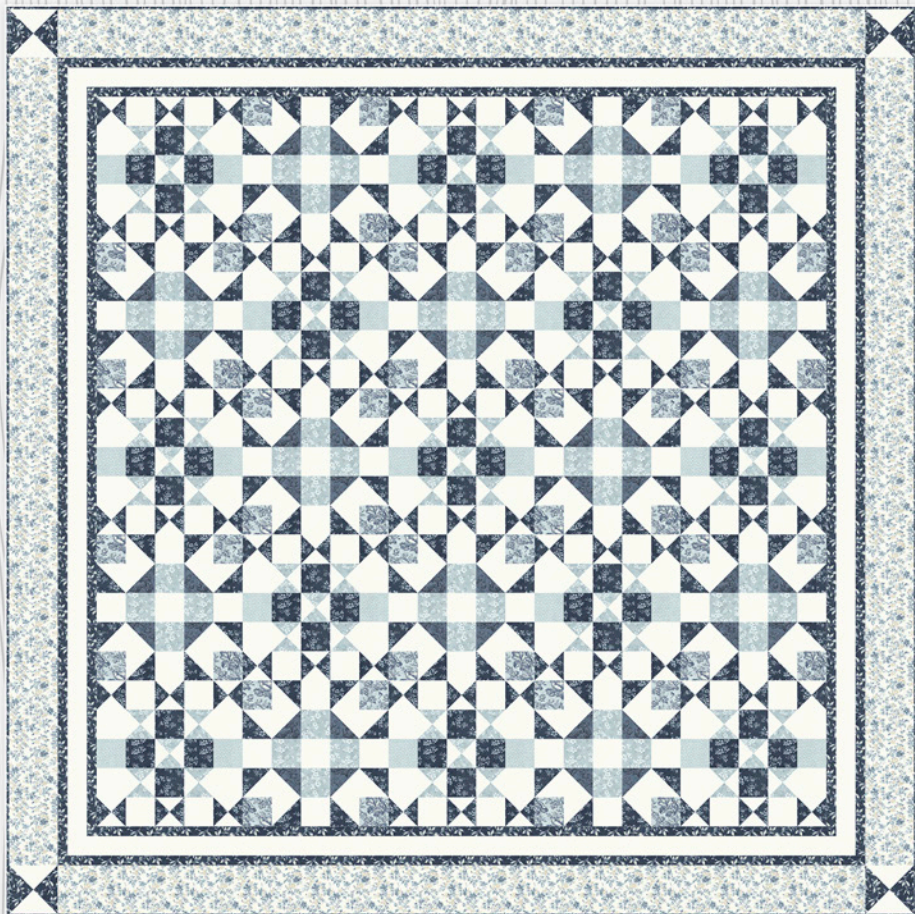


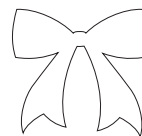
# Serene



## A Pieced Quilt Pattern

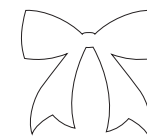
93 x 93

#QF-2221



# Serene

An 93 x 93 inch Quilt Pattern



Fabric A 1/2 yard  
Block  
Moda Cascade 44320-13



Fabric B 5/8 yard  
Block  
Moda Cascade 44320-14



Fabric C 1 3/8 yards  
Border 4  
Moda Cascade 44321-21



Fabric D 1 yard  
Block  
Moda Cascade 44322-13



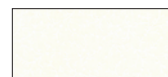
Fabric E 1 7/8 yards  
Block  
Moda Cascade 44322-15



Fabric F 2 yards  
Border 1, 3, border 4  
corners, binding  
Moda Cascade 44324-15



Fabric G 4 1/4 yards  
Block, border 2,  
border 4 corners  
Moda Cascade 44327-11



Fabric H 3/8 yard  
Block  
Moda Cascade 44328-13



Backing fabric of choice 8 3/4 yards 44 inches wide. OR 3 yards 108 inches wide.  
Batting 3 yards 108 inch wide

**Notions and Such:** Matching thread for seams.

**Recommended Tools:** Rotary cutter, mat and ruler.

WS \$6.00

the **QUILT FACTORY**  
Pattern designs by Deb Grogan  
Email: Deb@thequiltfactory.com  
www.thequiltfactory.com

QF-2221 Serene

moda  
UNITED NOTIONS

Fabric for our sample quilt generously supplied by  
Moda Fabrics.



7 52349 96310 1

©2022 The Quilt Factory/Debra Grogan. All rights reserved. This pattern may not be reproduced or shared. Pattern may be used by one person for personal use or to make finished goods for charities, sale in retail and on-line shops or craft fairs, but may not be mass produced. We have made every attempt to provide you with accurate information, if you have any questions please email us at: Deb@thequiltfactory.com

# Granny's Garden



A 55 x 55 inch  
Table Square Pattern

#QF-2213



## Granny's Garden

Necessities for a 54 x 54 inch Table Square

Fabric A - One 5 x 5 pre-cut pack  
Quilt center  
Moda Fruit Cocktail 20460PP

5x5 Charm  
Pack

Backing fabric of choice 3 1/2 yards  
44 inch wide (pieced) or 1 3/4 yards  
90 inches wide.

Fabric B - 1/4 yard  
Applique  
Moda Fruit Cocktail 20462-18



Batting 1 3/4 yards 90 inches wide  
or Twin package.

Fabric C - 1/4 yard  
Applique  
Moda Fruit Cocktail 20465-16



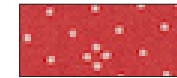
Fusible web 1/12 yards  
\*We recommend Soft Fuse

Fabric D - 7/8 yard  
Border 2  
Moda Fruit Cocktail 20467-15



White embroidery flos  
Embroidery hoop and needle

Fabric E - 2 yards  
Applique, quilt center,  
border 1, binding  
Moda Fruit Cocktail 20457-45



Water soluble quilt marker

Fabric F - 1/8 yard  
Applique  
Moda Fruit Cocktail 20457-46



**Recommended Tools:**  
Rotary cutter, mat and ruler.  
Iron. Light box or light source.

Fabric G - 15/8 yard  
Quilt center  
Moda Fruit Cocktail 20457-51



WS \$6.00

the **QUILT FACTORY**  
Pattern designs by Deb Grogan  
Email: [deb@thequiltfactory.com](mailto:deb@thequiltfactory.com)  
[www.thequiltfactory.com](http://www.thequiltfactory.com)

Granny's Garden QF-2213

*moda*  
UNITED NOTIONS

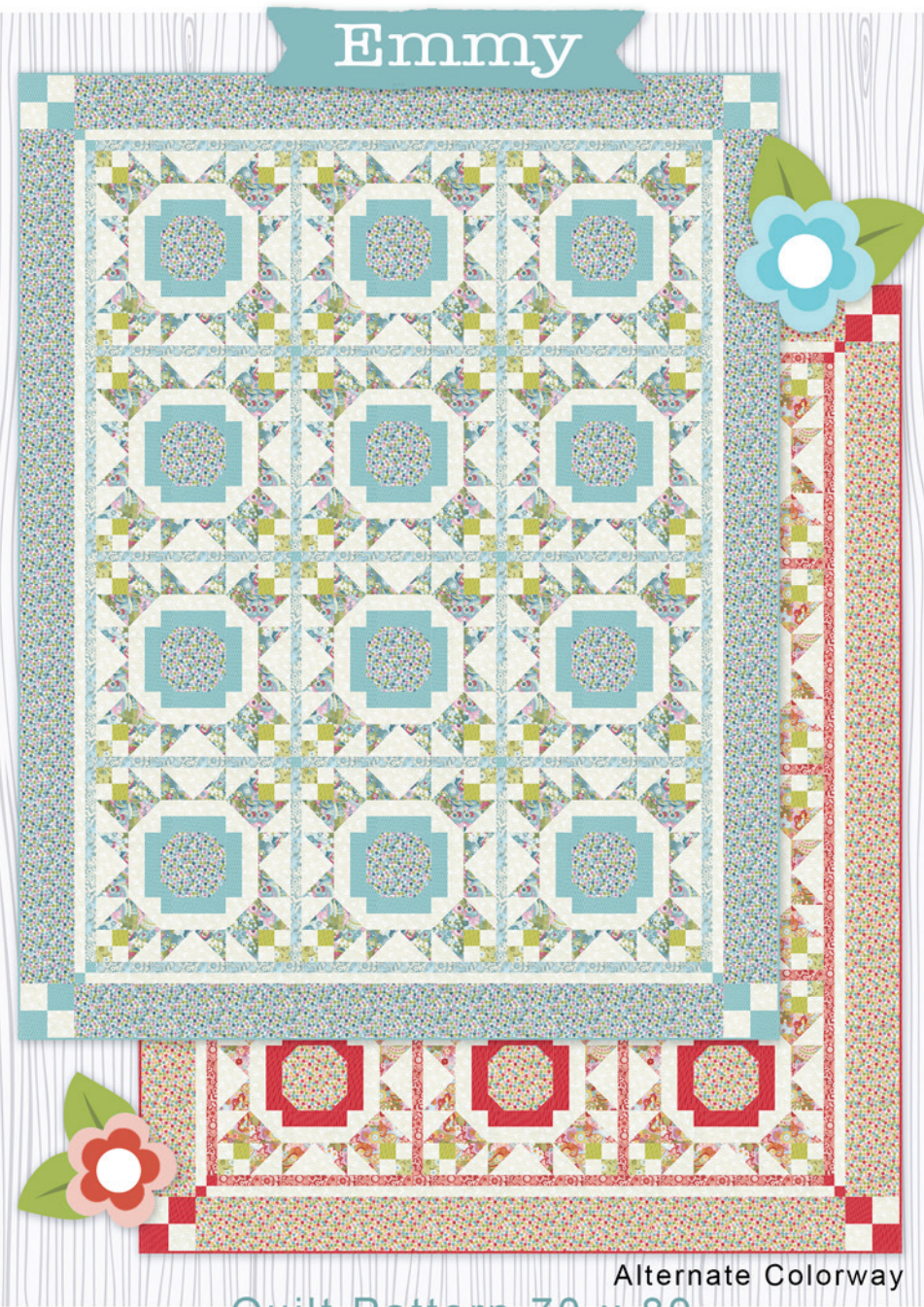
Fabric for our sample quilt generously supplied  
by Moda Fabrics.



7 52349 96302 6

©2022 The Quilt Factory/Debra Grogan. All rights reserved. This pattern may not be reproduced or shared. Pattern may be used by one person for personal use or to make finished goods for charities, sale in retail and on-line shops or craft fairs, but may not be mass produced. We have made every attempt to provide you with accurate information, if you have any questions please email us at: [deb@thequiltfactory.com](mailto:deb@thequiltfactory.com)

# Emmy



Alternate Colorway

Quilt Pattern 70 x 89

#QF-2212



# Emmy

An 55 x 67 inch Quilt Pattern



Fabric A 1 $\frac{1}{2}$  yards  
Block  
Moda Jolie 33691-16



Fabric A 1 $\frac{1}{2}$  yards  
Block  
Moda Jolie 33691-11



Fabric B 3/4 yard  
Sashing, border 1  
Moda Jolie 33693-11



Fabric B 3/4 yard  
Sashing, border 1  
Moda Jolie 33693-20



Fabric C 1/4 yard  
Block  
Moda Jolie 33694-15



Fabric C 1 yard  
Block/4  
Moda Jolie 33694-15



Fabric D 1 $\frac{1}{2}$  yards  
Block, border 2  
Moda Jolie 33695-12



Fabric D 1 $\frac{1}{2}$  yards  
Block, border 2  
Moda Jolie 33695-11



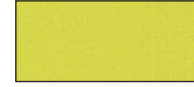
Fabric E 2 $\frac{1}{2}$  yards  
Block, border 2,  
border 2, 3 corners  
Moda Jolie 3369-11



Fabric E 2 $\frac{1}{2}$  yards  
Block, border 2,  
border 2, 3 corners  
Moda Jolie 3369-11



Fabric F 1/4 yard  
Block  
Moda Bella 9900-188



Fabric F 1/2 yard  
Binding  
Moda Bella 9900-188



Fabric F 1 $\frac{1}{2}$  yards  
Block, sashing posts,  
border 1, 2 and 3  
corners, binding  
Moda Bella 9900-263



Fabric F 1 $\frac{1}{2}$  yards  
Block, sashing posts,  
border 1, 2 and 3  
corners, binding  
Moda Bella 9900-258



Backing fabric of choice 5 $\frac{1}{2}$  yards 44 inch  
or 2 $\frac{1}{2}$  yards 108 inch wide.

Batting 2 $\frac{1}{2}$  yards 108 inch wide

**Notions and Such:**

Matching thread for seams.

**Recommended Tools:**

Rotary cutter, mat and ruler.

Fabric for our sample quilt  
generously supplied by Moda

*moda*  
UNITED NOTIONS



WS \$6.00

the QUILT FACTORY

Pattern designs by Deb Grogan  
Email: Deb@thequiltfactory.com  
www.thequiltfactory.com

Emmy QF-2212

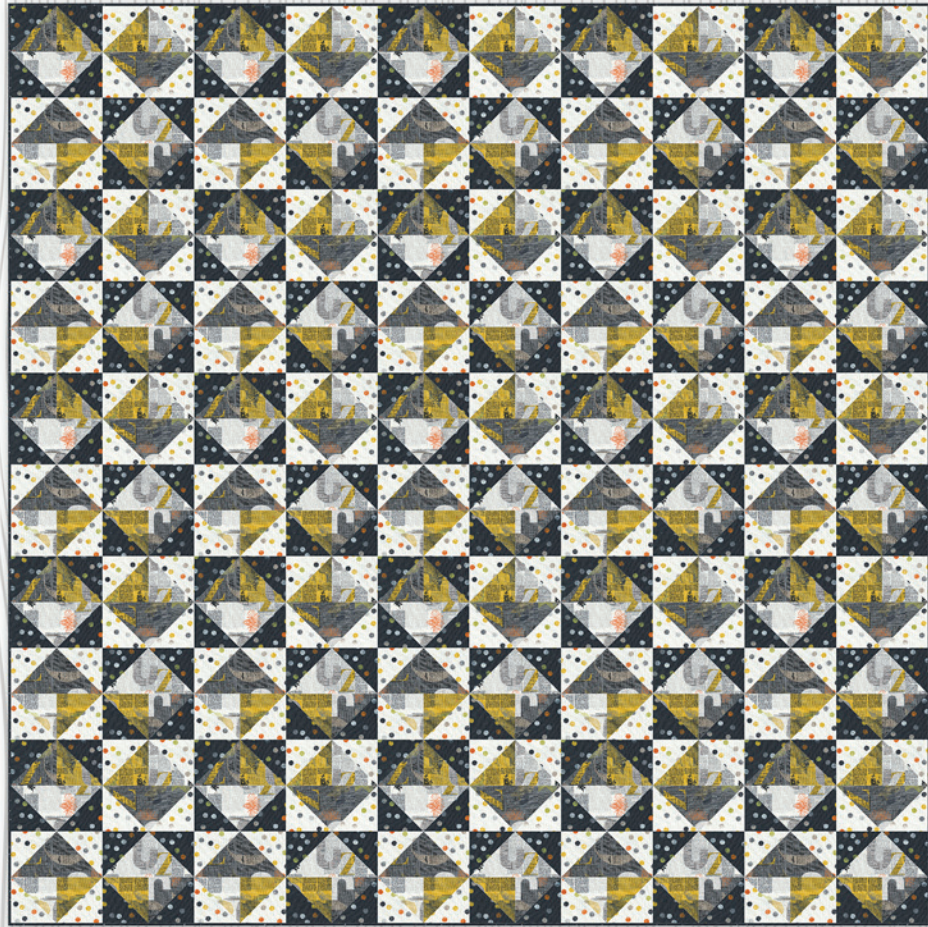


7 52349 96301 9

©2022 The Quilt Factory/Debra Grogan. All rights reserved. This pattern may not be reproduced or shared. Pattern may be used by one person for personal use or to make finished goods for charities, sale in retail and on-line shops or craft fairs, but may not be mass produced. We have made every attempt to provide you with accurate information, if you have any questions please email us at:

Deb@thequiltfactory.com

# Hidden Stars



80 x 80 inch Quilt Pattern

#QF-2209



# Hidden Stars

An 80 x 80 inch Quilt Pattern



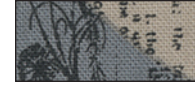
Fabric A 1 7/8 yards  
Block  
Moda Filigree 1810-11



Fabric B 1 yard  
Block  
Moda Filigree 1810-12



Fabric C 1 7/8 yards  
Block  
Moda Filigree 1810-14



Fabric D 1 7/8 yards  
Block  
Moda Filigree 1813-12



Fabric E 1 7/8 yards  
Block  
Moda Filigree 1813-23



Fabric F 1/2 yard  
Binding  
Moda Filigree 1814-20



Backing fabric of choice 7 7/8 yards 44 inch  
or 2 7/8 yards 108 inch wide.  
Batting 2 7/8 yards 108 inch wide

Notions and Such:  
Matching thread for seams.

Recommended Tools: Rotary cutter, mat  
and ruler.

WS \$6.00

the **QUILT FACTORY**  
Pattern designs by Deb Grogan  
Email: [Deb@thequiltfactory.com](mailto:Deb@thequiltfactory.com)  
[www.thequiltfactory.com](http://www.thequiltfactory.com)

Hidden Stars QF-2209

Fabric for our sample quilt  
generously supplied by Moda

*moda*  
UNITED NOTIONS



©2022 The Quilt Factory/Debra Grogan. All rights reserved. This pattern may not be reproduced or shared. Pattern may be used by one person for personal use or to make finished goods for charities, sale in retail and on-line shops or craft fairs, but may not be mass produced. We have made every attempt to provide you with accurate information, if you have any questions please email us at: [Deb@thequiltfactory.com](mailto:Deb@thequiltfactory.com)

# FARM FRESH



A 48 X 56 INCH QUILT PATTERN

#QF-2207

the **QUILT FACTORY**



# FARM FRESH

A 48 x 56 inch Quilt Pattern



Fabric A Garnet deep plum 1/2 yard  
Applique, border  
Moda Crossweave 12216-11

Fabric B Crimson red 1/2 yard  
Applique, border  
Moda Crossweave 12216-14

Fabric C Carnation pink F8th  
Applique  
Moda Crossweave 12216-15

Fabric D Goldenrod yellow 1/3 yard  
Applique  
Moda Crossweave 12216-16

Fabric E Cheddar orange 7/8 yard  
Applique, border  
Moda Crossweave 12216-17

Fabric F Limeade green 1/2 yard  
Applique, border corners, applique back-  
ground  
Moda Crossweave 12216-18

Fabric G Shamrock green 1 yard  
Applique, border  
Moda Crossweave 12216-19

Fabric H Sea Glass aqua 3/4 yard  
Applique, applique background  
Moda Crossweave 12216-23

Fabric I Glacier blue 5/8 yard  
Applique background  
Moda Crossweave 12216-24

Fabric J Lake deep blue 1 1/8 yards  
Applique, applique background, binding  
Moda Crossweave 12216-25

Fabric K Charcoal black 1/8 yard  
Applique  
Moda Crossweave 12216-28

*moda*  
UNITED NOTIONS

Fabric for our sample quilt generously sup-  
plied by Moda Fabrics.

©2022 The Quilt Factory/Debra Grogan. All rights reserved. This pattern may not be reproduced or shared. Pattern may be used by one person for personal use or to make finished goods for charities, sale in retail and on-line shops or craft fairs, but may not be mass produced. We have made every attempt to provide you with accurate information, if you have any questions please email us at:

Deb@thequiltfactory.com

Fabric L Silver grey 1/8 yard  
Applique  
Moda Crossweave 12216-31

Fabric M Zen Grey medium grey 3/4 yard  
Applique background  
Moda Crossweave 12216-32

Fabric N Off white 1/8 yard  
Applique  
Moda Crossweave 12216-34

Fabric O Porcelain cream 1/8 yard  
Applique  
Moda Crossweave 12216-35

Fabric P Chocolate brown 5/8 yard  
Applique, applique background  
Moda Crossweave 12216-37

Backing fabric of choice 3 1/2 yards 44  
inches wide.  
Batting 1 7/8 yards 44 inch wide

**Notions and Such:** Matching thread  
for seams and appliqué.  
Embroidery floss: Black, dark orange,  
white, light green, dark green, tan,  
medium pink  
Embroidery needle and hoop.

**Recommended Tools:** Rotary cutter,  
mat and ruler.  
Light box or light source.

**WS \$8.00**

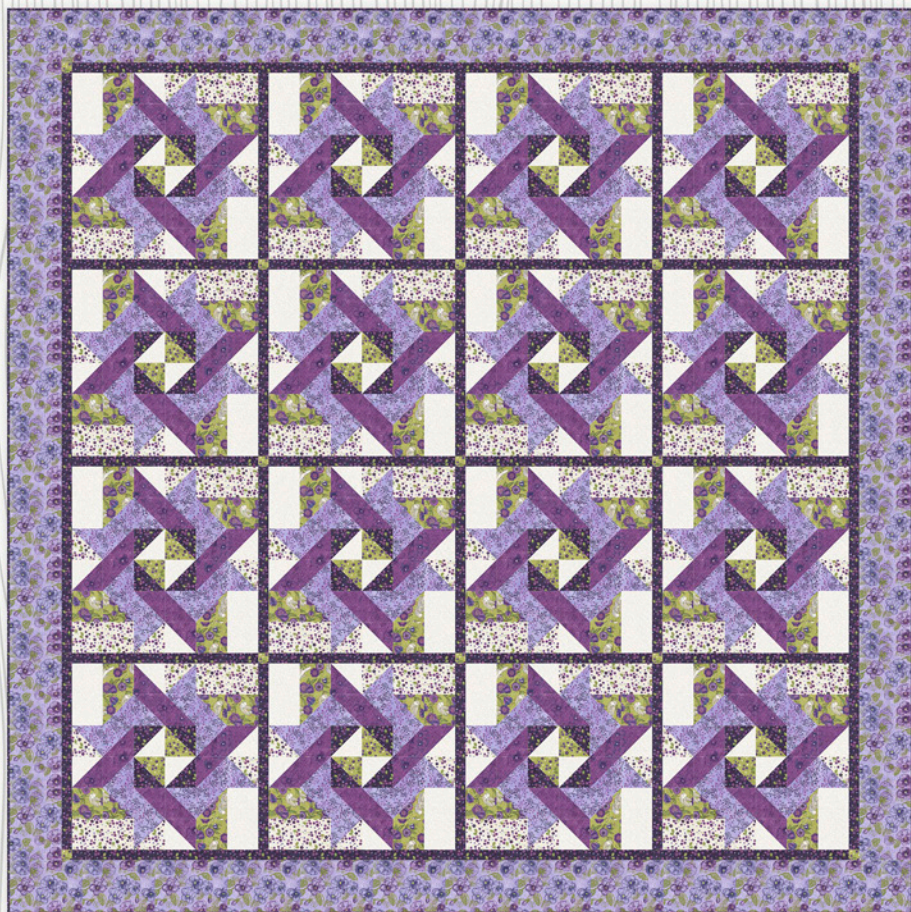
the **QUILT FACTORY**  
Pattern designs by Deb Grogan  
Email: Deb@thequiltfactory.com  
www.thequiltfactory.com

Farm Fresh QF-2207



7 52349 96296 8

# Nesting



An 87 X 87 inch Quilt Pattern

#QF-2206



# Nesting

A 91 x 91 inch Quilt Pattern



Fabric A Lrg floral on lavender 1 5/8 yards  
Border 2  
Moda Pansy's Posies 48721-13

Fabric B Tonal floral on plum 1 1/8 yards  
Block  
Moda Pansy's Posies 48721-14

Fabric C Floral and birds on green 1 yard  
Block  
Moda Pansy's Posies 48722-17

Fabric D Dot flowers on cream 1 yard  
Block  
Moda Pansy's Posies 48723-11

Fabric E Dot flowers on very drk purple 2 yards  
Block, sashing, border 1, binding  
Moda Pansy's Posies 48723-15

Fabric F Dot flowers on green 3/8 yard  
Block  
Moda Pansy's Posies 48723-17

Fabric G Tonal spray on lavender 1 1/2 yards  
Block  
Moda Pansy's Posies 48724-23

Fabric H Dotty thatched cream 1 1/4 yards  
Block  
Moda Pansy's Posies 48715-36

Backing fabric of choice 7 3/4 yards 44 inches wide. OR 2 5/8 yards 108 inches wide.  
Batting 2 5/8 yards 108 inch wide

**Notions and Such:** Matching thread for seams.

**Recommended Tools:** Rotary cutter, mat and ruler.

WS \$5.00

the **QUILT FACTORY**  
Pattern designs by Deb Grogan  
Email: [Deb@thequiltfactory.com](mailto:Deb@thequiltfactory.com)  
[www.thequiltfactory.com](http://www.thequiltfactory.com)

Nesting QF-2206



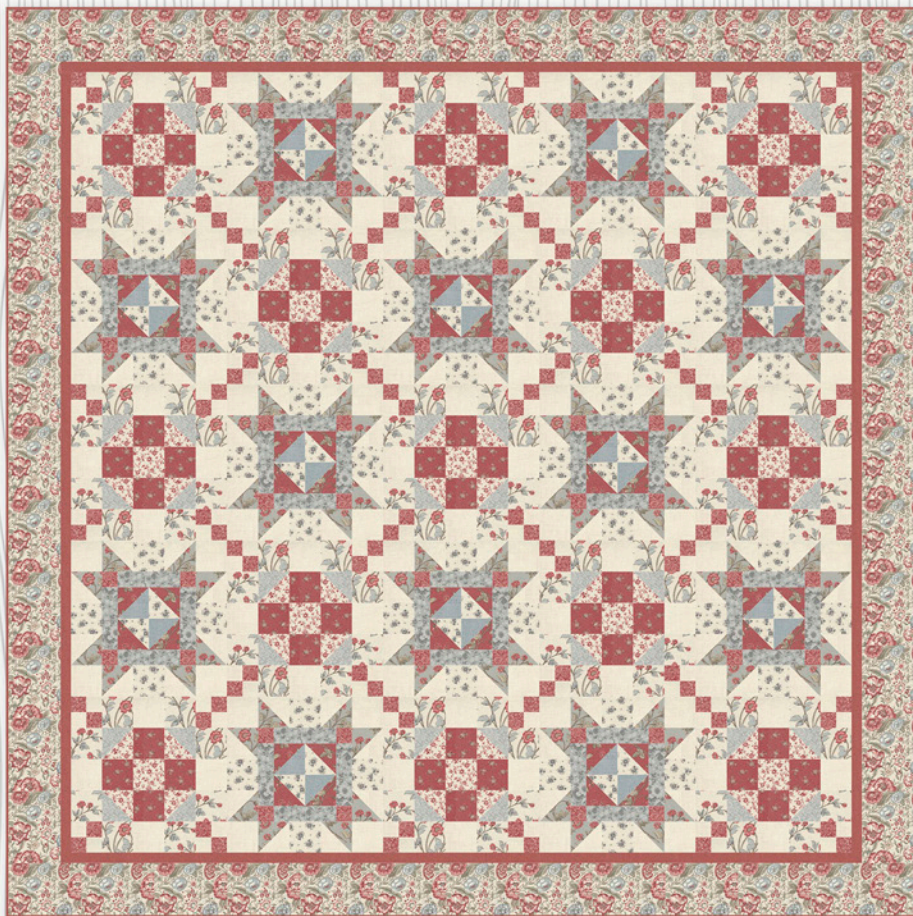
7 52349 96295 1

moda  
UNITED NOTIONS

Fabric for our sample quilt generously supplied by Moda Fabrics.

©2022 The Quilt Factory/Debra Grogan. All rights reserved. This pattern may not be reproduced or shared. Pattern may be used by one person for personal use or to make finished goods for charities, sale in retail and on-line shops or craft fairs, but may not be mass produced. We have made every attempt to provide you with accurate information, if you have any questions please email us at: [Deb@thequiltfactory.com](mailto:Deb@thequiltfactory.com)

# SERENADE



AN 87 X 87 INCH QUILT PATTERN

#QF-2208



# SERENADE

A 91 x 91 inch Quilt Pattern



Fabric A Large floral on cream 1 5/8 yards  
Border 2  
Moda La Grande Soiree 13920-16

Fabric B Floral spray on red 3/8 yard  
Block  
Moda La Grande Soiree 13921-12

Fabric C Floral spray on blue 3/4 yard  
Block  
Moda La Grande Soiree 13921-14

Fabric D Floral spray on ivory w/blue 7/8 yard  
Block  
Moda La Grande Soiree 13921-16

Fabric E Tonal floral on blue 1/2 yard  
Block  
Moda La Grande Soiree 13922-17

Fabric F Cream floral on red 1/2 yard  
Block  
Moda La Grande Soiree 13924-14

Fabric G Cream floral on blue 3/8 yard  
Block  
Moda La Grande Soiree 13924-17

Fabric H Red floral spray on cream 1/2 yard  
Block  
Moda La Grande Soiree 13925-18

Fabric I Tiny gold floral on red 1/2 yard  
Block  
Moda La Grande Soiree 13927-12

Fabric J tiny blue floral on cream 5/8 yard  
Block  
Moda La Grande Soiree 13927-20

Fabric K Red linen look 1 1/8 yards  
Border 1, binding  
Moda La Grande Soiree 13529-19

Fabric L Ivory linen look 1 3/4 yards  
Block  
Moda La Grande Soiree 13529-21

Fabric M Blue linen look 1/4 yard  
Block  
Moda La Grande Soiree 13529-169

Backing fabric of choice 7 3/4 yards 44 inches wide. OR 2 5/8 yards 108 inches wide.  
Batting 2 5/8 yards 108 inch wide

**Notions and Such:** Matching thread for seams.

**Recommended Tools:** Rotary cutter, mat and ruler.

WS \$5.00

the **QUILT FACTORY**  
Pattern designs by Deb Grogan  
Email: [Deb@thequiltfactory.com](mailto:Deb@thequiltfactory.com)  
[www.thequiltfactory.com](http://www.thequiltfactory.com)

Serenade QF-2208

*moda*  
UNITED NOTIONS

Fabric for our sample quilt generously supplied by Moda Fabrics.



©2022 The Quilt Factory/Debra Grogan. All rights reserved. This pattern may not be reproduced or shared. Pattern may be used by one person for personal use or to make finished goods for charities, sale in retail and on-line shops or craft fairs, but may not be mass produced. We have made every attempt to provide you with accurate information, if you have any questions please email us at: [Deb@thequiltfactory.com](mailto:Deb@thequiltfactory.com)

# Double Take



A 91 x 91 inch Quilt Pattern

#QF-2205



# Double Take

A 91 x 91 inch Quilt Pattern



Fabric A Large cream oral 1 7/8 yards  
Border 2  
Moda Rendezvous 44300-11

Fabric B Cream oral spray 3/8 yard  
Sashing post  
Moda Rendezvous 44300-11

Fabric C Red oral spray 1/2 yard  
Border 1  
Moda Rendezvous 44301-13

Fabric D Green paisley 5/8 yard  
Block  
Moda Rendezvous 44302-16

Fabric E Tonal red oral 1 1/2 yards  
Block  
Moda Rendezvous 44303-13

Fabric F Tonal cream oral spray 2 7/8 yards  
Block, tulip sashing  
Moda Rendezvous 44305-31

Fabric G Red tonal leaf spray 1/2 yard  
Tulip sashing, binding  
Moda Rendezvous 44307-13

Fabric H Rose tonal leaf spray 2 3/8 yards  
Tulip sashing  
Moda Rendezvous 44307-15

Fabric I Tiny ower on cream 2 1/8 yards  
Block  
Moda Rendezvous 44308-11

Fabric J Tiny oral on lt. green 1 3/8 yards  
Tulip sashing  
Moda Rendezvous 44308-16

Fabric K Tiny oral on drk green 1/4 yard  
Tulip sashing  
Moda Rendezvous 44308-17

Backing fabric of choice 8 1/8 yards 44 inches wide. OR 2 3/4 yards 108 inches wide  
Batting 2 3/4 yards 108 inch wide

**Notions and Such:** Matching thread for seams.

**Recommended Tools:** Rotary cutter, mat and ruler.

WS \$6.00

the **QUILT FACTORY**  
Pattern designs by Deb Grogan  
Email: Deb@thequiltfactory.com  
www.thequiltfactory.com

Double Take QF-2205

moda  
UNITED NOTIONS

Fabric for our sample quilt generously supplied by Moda Fabrics.

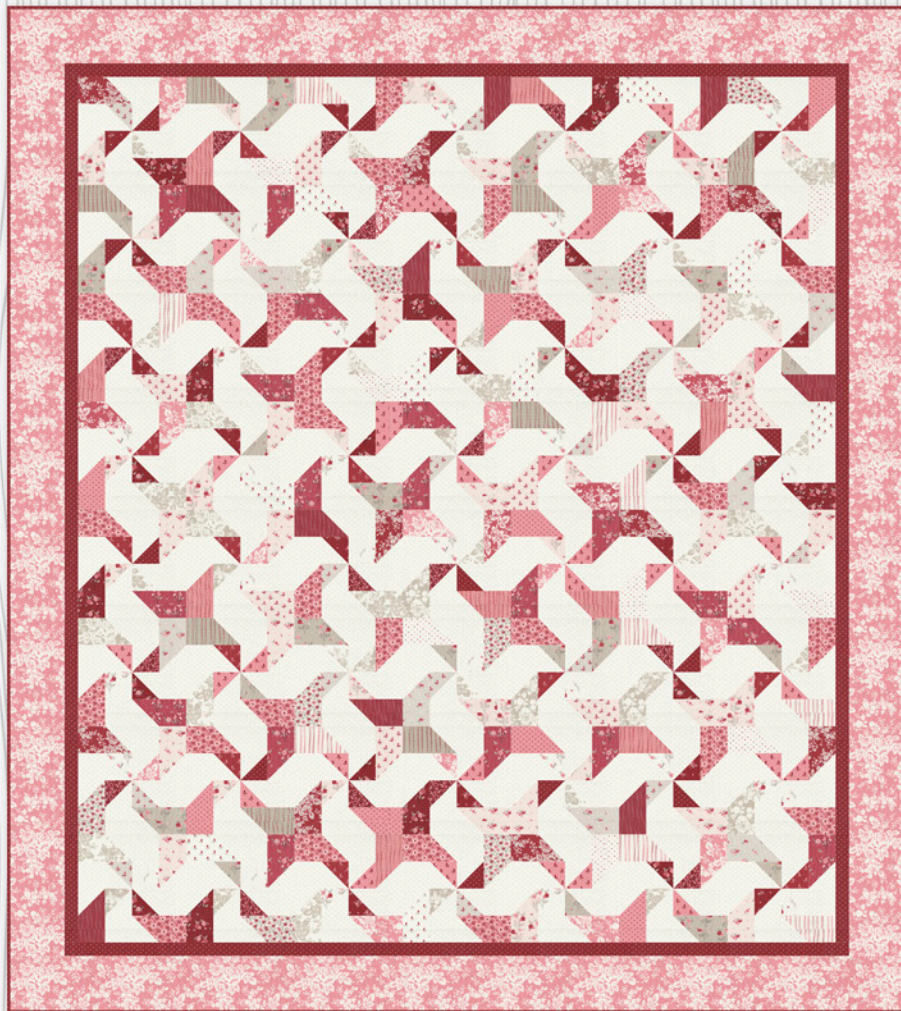


7 52349 96294 4

©2022 The Quilt Factory/Debra Grogan. All rights reserved. This pattern may not be reproduced or shared. Pattern may be used by one person for personal use or to make finished goods for charities, sale in retail and on-line shops or craft fairs, but may not be mass produced. We have made every attempt to provide you with accurate information, if you have any questions please email us at: Deb@thequiltfactory.com



# Runaway



A Jelly Roll Friendly Quilt Pattern  
66 x 74 inches  
QF-2204



# Runaway



A Jelly Roll Friendly 66 x 74 inch Quilt

Fabric A Assorted prints, one 2 1/2 hch jelly roll  
OR 2 3/4 yards at least 2 1/2 inches wide  
Block  
Moda The Flower Farm 3010JR

Fabric B Lrg. white coral on pink 1 1/4 yards  
Border 2  
Moda The Flower Farm 3011-25

Fabric C Taupe dots on cream 2 7/8 yards  
Block  
Moda The Flower Farm 3015-12

Fabric D Cream dot on deep red 1 1/8 yard  
Border 1, bindings  
Moda The Flower Farm 3015-18

Backing fabric of choice 4 1/2 yards  
44 inches or 2 1/4 yards 90 inch wide.

Batting 2 1/4 yards 90 inch wide or  
packaged Twin

**Notions and Such:** Matching thread  
for seams.

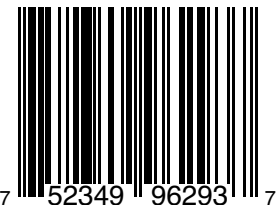
**Recommended Tools:** Rotary cut-  
ter, mat and ruler.

WS \$5.00

the QUILT FACTORY

Pattern designs by Deb Grogan  
Email: Deb@thequiltfactory.com  
www.thequiltfactory.com

RUNAWAY QF-2204

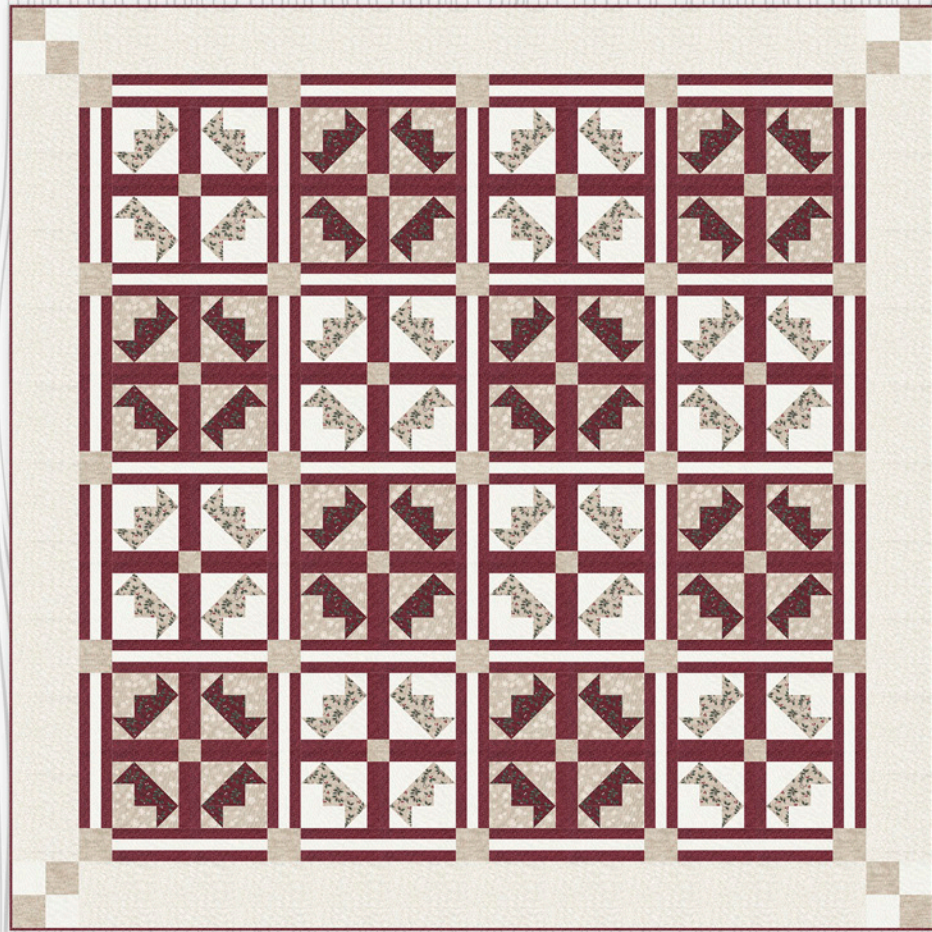


moda  
UNITED NOTIONS

Fabric for our sample quilt generously supplied  
by Moda Fabrics.

©2022 The Quilt Factory/Debra Grogan. All rights reserved. This pattern may not be reproduced or shared. Pattern may be used by one person for personal use or to make finished goods for charities, sale in retail and on-line shops or craft fairs, but may not be mass produced. We have made every attempt to provide you with accurate information, if you have any questions please email us at: Deb@thequiltfactory.com

# Crimson Majesty



An 83 x 83 inch Quilt Pattern

#QF-2120



## Crimson Majesty

Necessities for a 83 x 83 inch Quilt



Fabric A - Snowflakes on taupe 1 yard  
Block  
Moda Winter Flurries 6882-38

Fabric B - Cream tonal tiny flowers 2 yards Block,  
sashing, border 2 corners  
Moda Winter Flurries 6883-21

Fabric C - Dark red tonal tiny flowers 3 yards  
Block, sashing, binding  
Moda Winter Flurries 6883-24

Fabric D - Leaf spray on dark red 2/3 yard Block  
Moda Winter Flurries 6884-14

Fabric E - Leaf spray on taupe 2/3 yard  
Block  
Moda Winter Flurries 6884-18

Fabric F - Taupe wreath swirls on cream 1 5/8 yards  
Border 2  
Moda Winter Flurries 6885-11

Fabric G - Taupe marble 1/2 yard  
Sashing posts, border 2 corners  
Moda Winter Flurries 6538-261

Backing fabric of choice 7 1/2 yards 44  
inches or 2 1/2 yards 90 inch wide

Batting 2 1/2 yards 90 inch wide or pack  
aged Queen

**Notions and Such:** Matching thread  
for seams

**Recommended Tools:**  
Rotary cutter, mat and ruler. Iron.

WS \$5.00

the **QUILT FACTORY**  
Pattern designs by Deb Grogan  
Email: [Deb@thequiltfactory.com](mailto:Deb@thequiltfactory.com)  
[www.thequiltfactory.com](http://www.thequiltfactory.com)  
Crimson Majesty QF-2120

*moda*  
UNITED NOTIONS

Fabric for our sample quilt generously supplied  
by Moda Fabrics.



©2021 The Quilt Factory/Debra Grogan. All rights reserved. This pattern may not be reproduced or shared. Pattern may be used by one person for personal use or to make finished goods for charities, sale in retail and on-line shops or craft fairs, but may not be mass produced. We have made every attempt to provide you with accurate information, if you have any questions please email us at: [Deb@thequiltfactory.com](mailto:Deb@thequiltfactory.com)

By the Shore



A 57 x 57 inch Table Square

Quilt Pattern

#QF-2119



By the Shore



Necessities for a 32 x 60 inch Wall Hanging

Fabric A - Multi prints  
Quilt center  
5 x 5 pre-cut 1 pack OR  
1 yard of scrap fabric 5 inches wide  
Moda Nantucket Summer 55260PP

Fabric B - Navy tonal spray 1/4 yard  
Applique  
Moda Nantucket Summer 55261-23

Fabric C - Green tonal spray 3/8 yard  
Applique  
Moda Nantucket Summer 55261-26

Fabric D - Light blue tonal spray 1/8 yard  
Applique  
Moda Nantucket Summer 55261-34

Fabric E - Cream with navy dot 13/8 yards  
Applique background, quilt center  
Moda Nantucket Summer 55264-11

Fabric F - Navy dot 1 1/2 yards  
Quilt center, applique background, binding  
Moda Nantucket Summer 55264-12

Fabric G - Cream grid 1/8 yard  
Applique  
Moda Nantucket Summer 55265-11

Fabric H - Cream with light blue grid 1/8 yard  
Applique background  
Moda Nantucket Summer 55265-24

Fabric I - Navy tiny posies 1/8 yard  
Applique  
Moda Nantucket Summer 55266-13

Fabric J - Cream with light blue stripe 1 1/8 yards  
Border 2  
Moda Nantucket Summer 55267-24

Backing fabric of choice 3 1/2 yards 44 inch wide (pieced) or 1 3/4 yards 90 inches wide

Batting 1 3/4 yards 90 inches wide or Twin package.

**Notions and Such:**

Matching thread for seams and applique.

Fusible web 1 1/2 yards

\*We recommend Soft Fuse

Light box or light source.

Water soluble quilt marker

**Recommended Tools:**

Rotary cutter, mat and ruler. Iron.

WS \$6.00

the **QUILT FACTORY**  
Pattern designs by Deb Grogan  
Email: [deb@thequiltfactory.com](mailto:deb@thequiltfactory.com)  
[www.thequiltfactory.com](http://www.thequiltfactory.com)

By the Shore QF-2119



moda  
UNITED NOTIONS

Fabric for our sample quilt generously supplied by Moda Fabrics.

©2021 The Quilt Factory/Debra Grogan. All rights reserved. This pattern may not be reproduced or shared. Pattern may be used by one person for personal use or to make finished goods for charities, sale in retail and on-line shops or craft fairs, but may not be mass produced. We have made every attempt to provide you with accurate information, if you have any questions please email us at: [deb@thequiltfactory.com](mailto:deb@thequiltfactory.com)



hello friend



hello friend

An 60 x 77 inch Quilt Pattern



Fabric A Large print on yellow 1 3/8 yards  
Border 2, appliqué  
Moda Renew 55560-12

Fabric B Pink tonal swirl 1 3/8 yards  
Appliqué, sashing, border 1  
Moda Renew 55561-11

Fabric C Yellow tonal swirl 1/4 yard  
Appliqué  
Moda Renew 55561-12

Fabric D Rainbow tonal swirl 3 yards  
Appliqué background  
Moda Renew 55561-15

Fabric E Rainbow plaid 2/3 yard  
Appliqué, binding  
Moda Renew 55562-15

Fabric F Pink grid Fat 1/8th  
Appliqué  
Moda Renew 55565-11

Fabric G Green grid 1/4 yard  
Appliqué  
Moda Renew 55565-13

Fabric H Grey grid 1/4 yard  
Appliqué  
Moda Renew 55565-14

Fabric I Pink geometric 1/4 yard  
Appliqué  
Moda Renew 55566-11

Fabric J Yellow circle geometric 1/4 yard  
Appliqué  
Moda Renew 55567-12

Fabric K Green circle geometric 1/3 yard  
Appliqué  
Moda Renew 55567-23

Fabric L Cream circle geometric 1/8 yard  
Appliqué  
Moda Renew 55567-25

Fabric M Rainbow confetti on cream Fat 1/8th  
Appliqué  
Moda Renew 55568-15

Backing fabric of choice 4 3/4 yards 44 inch  
or 2 yards 108 inch wide.  
Batting 2 yards 108 inch wide

Fusible web 2 yards

Notions and Such: Matching thread for seams  
and applique.

For embroidery accents:

Cosmo Floss: drk grey #895, drk pink  
#505A, green #634

Embroidery hoop and needle.

Iron, light table or source, quilt marker.

Recommended Tools: Rotary cutter, mat and  
ruler.

the QUILT FACTORY

Pattern designs by Deb Grogan  
Email: Deb@thequiltfactory.com  
www.thequiltfactory.com

WS \$8.00

Hello Friend QF-2114



Fabric for our sample quilt  
generously supplied by Moda

moda  
UNITED NOTIONS

7 52349 96282 1

©2021 The Quilt Factory/Debra Grogan. All rights reserved. This pattern may not be reproduced or shared. Pattern may be used by one person for personal use or to make finished goods for charities, sale in retail and on-line shops or craft fairs, but may not be mass produced. We have made every attempt to provide you with accurate information, if you have any questions please email us at: Deb@thequiltfactory.com



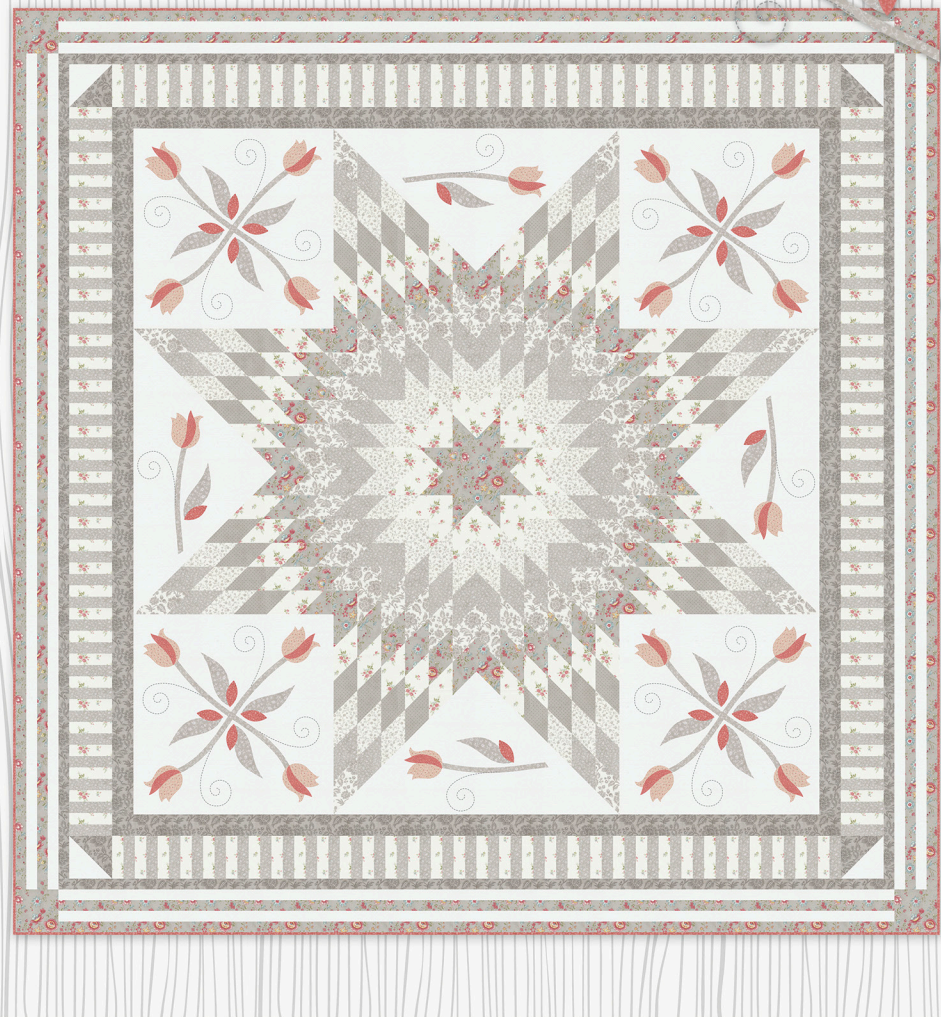
A 60 x 77 inch Quilt Pattern

#QF-2114

the QUILT FACTORY



# Astrid



## Quilt Pattern

86 x 86  
#QF-2113



# Astrid

Necessities for a 86 x 86 inch Quilt

Fabric A - Small floral on grey 1 1/4 yard  
Quilt center, border 4, border 4 corner  
Moda Promenade 44281-12

Fabric B - Small floral toss on cream 1 1/4 yard  
Quilt center, border 2  
Moda Promenade 44283-11

Fabric C - Flower spray on lt. pink 1/3 yard  
Applique  
Moda Promenade 44284-14

Fabric D - Tonal floral spray on grey 1 3/4 yard  
Quilt center, applique, border 2  
Moda Promenade 44285-22

Fabric E - Tonal flower spray on red 1 yard  
Applique, binding  
Moda Promenade 44285-25

Fabric F - Grey tonal floral on cream 1/2 yard  
Quilt Center  
Moda Promenade 44286-21

Fabric G - Grey grid 3/8 yard  
Quilt Center  
Moda Promenade 44287-12

Fabric H - Cream grid 3 3/4 yards  
Applique background, border 2 corner, border 4  
Moda Promenade 44287-21

Fabric I - Large grey floral on cream 1/2 yard  
Quilt center, border 1 corner  
Moda Promenade 442888-11

Fabric J - Large tonal floral on grey 1 1/4 yard  
Border 1 and 3, border 2 corner  
Moda Promenade 44288-12

Backing fabric of choice 7 7/8 yards 44 inch-  
es or 2 5/8 yards 108 inch wide.

Batting 2 5/8 yards 108 inch wide or pack-  
aged "Super Queen"

Notions and Such: Matching thread for  
seams and applique.

For embroidery accents:

Cosmo Floss: DRK GREY #154

Embroidery hoop and needle.

Iron, light table or source, quilt marker.  
Freezer paper, spray starch and brush,  
container with lid, fabric appliqué glue,  
water soluble quilt marker, scissors.

Clover mini iron or regular iron, ironing  
board

Recommended Tools: Rotary cutter, mat  
and ruler.

WS \$7.00

the QUILT FACTORY

Pattern designs by Deb Grogan

Email: Deb@thequiltfactory.com

www.thequiltfactory.com

Astrid QF-2113



moda  
UNITED NOTIONS

Fabric for our sample quilt generously supplied  
by Moda Fabrics.

©2021 The Quilt Factory/Debra Grogan. All rights reserved. This pattern may not be reproduced or shared. Pattern may be used by one person for personal use or to make finished goods for charities, sale in retail and on-line shops or craft fairs, but may not be mass produced. We have made every attempt to provide you with accurate information, if you have any questions please email us at: Deb@thequiltfactory.com

# Tulipa

16 X 50  
WALL HANGING



20 X 54 RUNNER



12 X 18 PLACEMAT

Runner, Wallhanging and Placemat Pattern

#QF-2115



	RUNNER	W. HANG	PLACEMAT X2	ALL
A 48710-19	F8	F8	F8	3/8
TULIPS CRANBERRY				
B 48712-15	1/8	F8	F8	3/8
TONAL FLOWERS GREEN				
C 48712-18		F8		F8
TONAL FLOWERS DEEP PINK				
D 48714-15	1/8	1/8	F8	3/8
LEAFY SWIRLS GREEN				
E 48714-19	1/4		1/8	3/8
LEAFY SWIRLS CRANBERRY				
F 48715-14	1/8	1/8	F8	3/8
DOTTY THATCHED SPRIG				
G 48715-36	5/8	1/8	FQ	1
DOTTY THATCHED CREAM				
H 48715-75	1/8	F8	F8	3/8
DOTTY THATCHED CHARTREUSE				
I 48715-158	5/8		FQ	7/8
DOTTY THATCHED WASHED LINEN				
J 48715-201	1/8	1/8	F8	3/8
DOTTY THATCHED PRINCESS				
K 48715-202	1/8			1/8
DOTTY THATCHED TULIP				
L 992-230		1 1/2		1 1/2
TOWELING				
Fusible Web	1	1	1	3

WS \$7.00

The samples for this pattern were made with  
Tulip Tango by Robin Pickens for Moda

## Tulipa

Necessities for Runner, Placemat and  
Wall Hanging

Batting and Backing  
Runner: 1 2/3 yards 44 inch.  
Placemat: 1/2 per 2 placemats

Notions and Such: Matching thread for  
seams and applique.

For embroidery accents:  
Cosmo Floss: DRK GREY #154  
Embroidery hoop and needle.  
Iron, light table or source, quilt marker.  
16 inch wire hanger (we used an Ackfeld  
Star Hanger)

Recommended Tools: Rotary cutter, mat  
and ruler.



Fabric for our sample quilt generously  
supplied by Moda Fabrics

moda  
UNITED NOTIONS

Tulipa QF-2115



the QUILT FACTORY

Pattern designs by Deb Grogan  
Email: deb@thequiltfactory.com

www.thequiltfactory.com

©2021 The Quilt Factory/Debra Grogan. All rights reserved. This pattern may not be reproduced or share. Pattern may be used by one person for personal use or to make finished goods for charities, sale in retail and on-line shops or craft fairs, but may not be mass produced. We have made every attempt to provide you with accurate information, if you have any questions please email us at: deb@thequiltfactory.com



Appliqué Wall Hanging

30x48  
#QF-2112



# hello Spring

Necessities for a 30x48 inch Wall Hanging

Fabric A - Stars on black 1/8 yard

Applique

Moda Twinkle 24106-20

Fabric B - Multi stars on white 5/8 yard

Block, applique background, applique

Moda Twinkle 24106-32M

Fabric C- Stars stars on pink 3/4 yard

Block, sashing, binding, applique

Moda Twinkle 24106-43

Fabric D - Stars on purple 1/2 yard

Block, applique

Moda Twinkle 24106-45

Fabric E - Stars on yellow 1/2 yard

Block, applique

Moda Twinkle 24106-46

Fabric F - Stars on kelly green FQ

Applique

Moda Twinkle 24106-48

Fabric G - Stars on aqua 1 yard

Block, applique background, applique

Moda Twinkle 24106-49

Fabric H - Stars on grey 1/8 yard

Applique

Moda Twinkle 24106-52

Fabric I - Stars on lime green 3/4 yard

Block, applique background, applique

Moda Twinkle 24106-54

Backing fabric of choice 1 1/2 yards 44 inches

Batting 1 1/2 yards 44 inch wide or packaged crib

Fusible web 1 1/2 yard

We recommend Soft Fuse

**Notions and Such:** Matching thread for seams and applique.

Cosmo Floss: 600 black, 100 white, 324 lime green, 444 orange

Embroidery needle and hoop

Water soluble quilt marker

Light table or source

**Notions and Such:** Matching thread for seams

**Recommended Tools:**

Rotary cutter, mat and ruler. Iron.

WS \$8.00

the **QUILT FACTORY**  
Pattern designs by Deb Grogan  
Email: Deb@thequiltfactory.com  
www.thequiltfactory.com  
Hello Spring QF-2112

moda  
UNITED NOTIONS

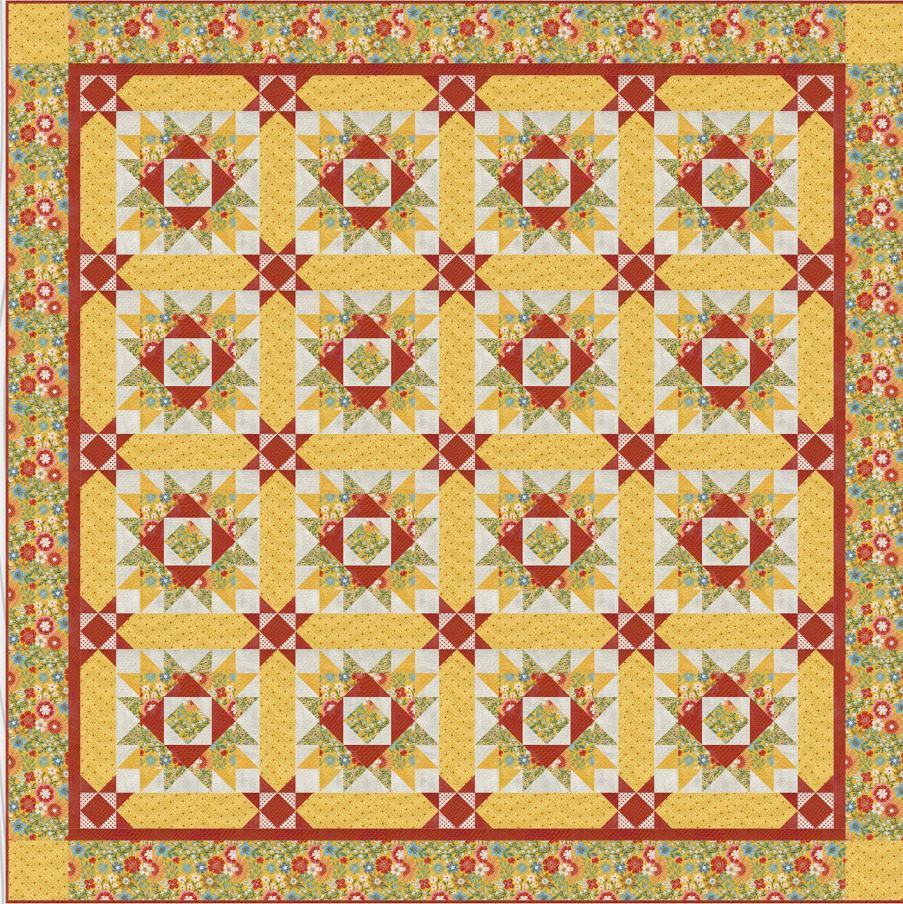
Fabric for our sample quilt generously supplied by Moda Fabrics.



7 52349 96280 7

©2021 The Quilt Factory/Debra Grogan. All rights reserved. This pattern may not be reproduced or shared. Pattern may be used by one person for personal use or to make finished goods for charities, sale in retail and on-line shops or craft fairs, but may not be mass produced. We have made every attempt to provide you with accurate information, if you have any questions please email us at: Deb@thequiltfactory.com

# Good Morning Sunshine



Quilt Pattern 83 x 83 inches  
#QF-2104



# Good Morning Sunshine



Necessities for a 83 x 83 inch Quilt

Fabric A Large coral on yellow 2 1/4 yards  
Block, border 3  
Moda Frankie 30670-16

Fabric B Small coral on yellow 1/2 yard  
Block  
Moda Frankie 30672-17

Fabric C Red dots blue hearts on white 1/4 yard  
Sashing posts  
Moda Frankie 30675-15

Fabric D White dots red hearts on yellow 2 1/4  
yards  
Sashing, border 3 corners  
Moda Frankie 30675-20

Fabric E Pearl grunge 1 5/8 yards  
Block  
Moda Frankie 30150-561

Fabric F Golden grunge 1/2 yard  
Block  
Moda Frankie 30150-564

Fabric G Melon Grunge 3 yards  
Sashing, sashing posts, border 1, block,  
binding  
Moda Frankie 30150-565

Backing fabric of choice 7 1/2 yards 44  
inches or 1 5/8 yards 90 inch wide

Batting 2 5/8 yards 108 inch wide or  
packaged Queen

**Notions and Such:** Matching thread for  
seams.

**Recommended Tools:** Rotary cutter,  
mat and ruler.

WS \$5.00

the QUILT FACTORY

Pattern designs by Deb Grogan  
Email: [Deb@thequiltfactory.com](mailto:Deb@thequiltfactory.com)  
[www.thequiltfactory.com](http://www.thequiltfactory.com)

Good Morning Sunshine QF-2104

moda  
UNITED NOTIONS

Fabric for our sample quilt generously supplied  
by Moda Fabrics.



©2021 The Quilt Factory/Debra Grogan. All rights reserved. This pattern may not be reproduced or shared. Pattern may be used by one person for personal use or to make finished goods for charities, sale in retail and on-line shops or craft fairs, but may not be mass produced. We have made every attempt to provide you with accurate information, if you have any questions please email us at: [Deb@thequiltfactory.com](mailto:Deb@thequiltfactory.com)



# Posy Pops



Alternate Dark Colorway!

Quilt Pattern 72x87

#QF-2109



# POSY POPS

Necessities for a 72x87 inch Quilt

Fabric A - Large floral on red 1/2 yard  
Block  
Moda Beautiful Day 29131-21

Fabric B - Tonal floral on pink 1 3/4 yards  
Block, Border 2  
Moda Beautiful Day 29132-29

Fabric C - Flower spray on lt. grey 1/4 yard  
Block  
Moda Beautiful Day 29133-13

Fabric D - Flower spray on pink 3/8 yard  
Block  
Moda Beautiful Day 29133-19

Fabric E - flower spray on red 1 1/8 yard  
Border 1, binding  
Moda Beautiful Day 29133-21

Fabric F - Flower sprigs on white/grey 2 1/2 yards  
Block  
Moda Beautiful Day 29134-21 Lt. version  
Moda Beautiful Day 29134-24 Dark version

Fabric G - White flower sprig on red 1/4 yard  
Block  
Moda Beautiful Day 29134-31

Fabric H - Green geometric 3/4 yards  
Block  
Moda Beautiful Day 29136-26

Fabric I - Red dots on white 3/8 yard  
Block  
Moda Beautiful Day 29137-21

Fabric J - Red dots on pink 1/8 yard  
Block  
Moda Beautiful Day 29137-29

Backing fabric of choice 5 1/4 yards 44 inches  
or 2 yards 90 inch wide.

Batting 2 5/8 yards 90 inch wide or pack-  
aged Full

**Notions and Such:** Matching thread for  
seams

**Recommended Tools:**  
Rotary cutter, mat and ruler. Iron.

WS \$5.00

the **QUILT FACTORY**  
Pattern designs by Deb Grogan  
Email: [Deb@thequiltfactory.com](mailto:Deb@thequiltfactory.com)  
[www.thequiltfactory.com](http://www.thequiltfactory.com)  
Posy Pops QF-2108

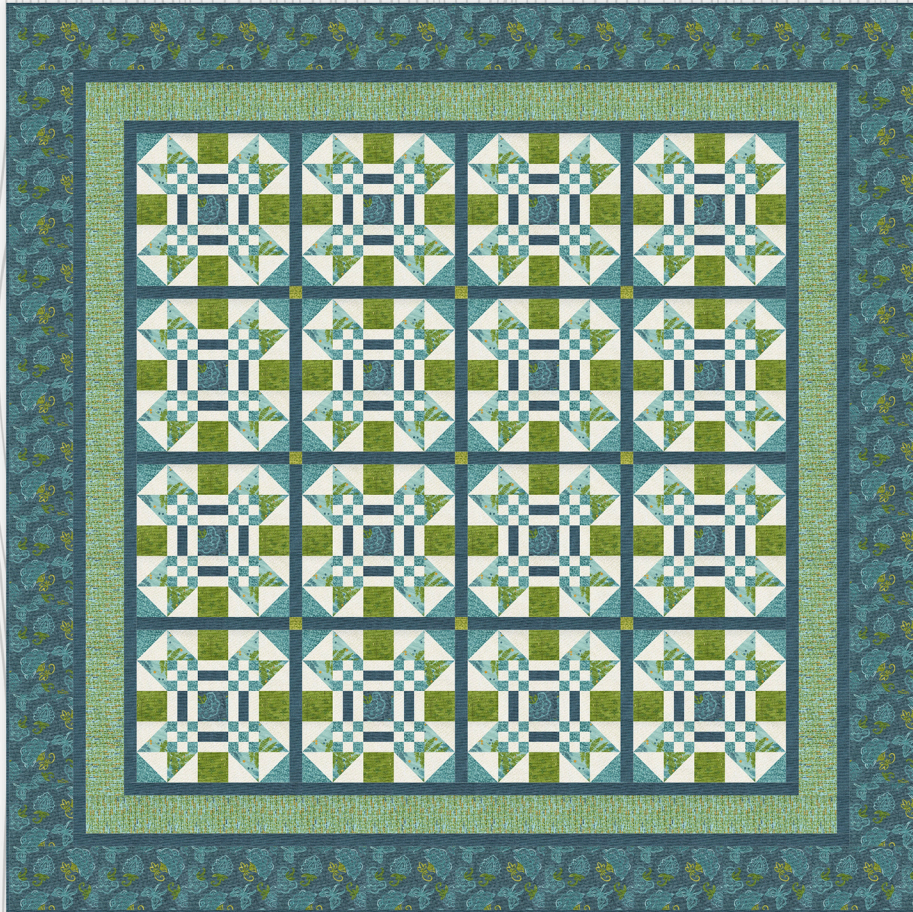


moda  
UNITED NOTIONS

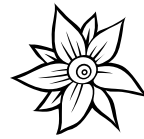
Fabric for our sample quilt generously supplied  
by Moda Fabrics.

©2021 The Quilt Factory/Debra Grogan. All rights reserved. This pattern may not be reproduced or shared. Pattern may be used by one person for personal use or to make finished goods for charities, sale in retail and on-line shops or craft fairs, but may not be mass produced. We have made every attempt to provide you with accurate information, if you have any questions please email us at: [Deb@thequiltfactory.com](mailto:Deb@thequiltfactory.com)

# Deep Water

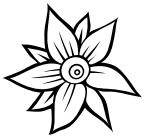


Quilt Pattern 71 x 71  
#QF-2106



# Deep Water

Necessities for a 71 x 71 inch Quilt



Fabric A Large tonal floral on blue 1 1/2 yards  
Block, border 4  
Moda Carolina Lilies 48701-21

Backing fabric of choice 4 1/2 yards 44 inches or 2 1/4 yards 90 inch wide.

Fabric B Tonal ferns on lt teal 5/8 yard  
Block  
Moda Carolina Lilies 48702-19

Batting 2 1/4 yards 90 inch wide or packaged Full

**Notions and Such:** Matching thread for seams.

Fabric C Floral sketches on green 1/2 yard  
Block  
Moda Carolina Lilies 48703-18

**Recommended Tools:** Rotary cutter, mat and ruler.

Fabric D Tonal vine on green 1/8 yard  
Sashing posts  
Moda Carolina Lilies 48704-17

Fabric Tonal vine on teal 3/4 yard  
Block  
Moda Carolina Lilies 48704-20

WS \$5.00

Fabric F Tonal vine on cream 1 1/2 yards  
Block  
Moda Carolina Lilies 48704-23

Fabric G Tonal dashes on lt. teal 7/8 yard  
Border 2  
Moda Carolina Lilies 48705-19

Fabric H Dark blue Thatched 2 yards  
Block, sashing, border 1, border 3, binding  
Moda Carolina Lilies 48626-199

the QUILT FACTORY

Pattern designs by Deb Grogan  
Email: [Deb@thequiltfactory.com](mailto:Deb@thequiltfactory.com)  
[www.thequiltfactory.com](http://www.thequiltfactory.com)

Deep Water QF-2106

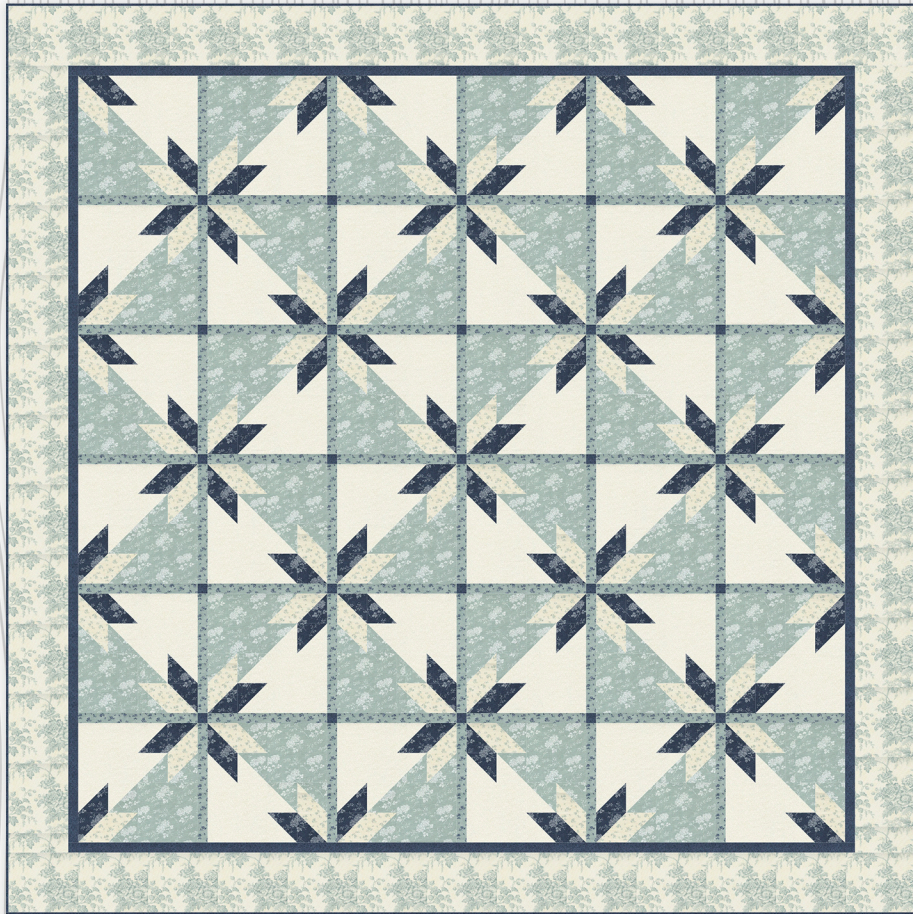
moda  
UNITED NOTIONS

Fabric for our sample quilt generously supplied by Moda Fabrics.

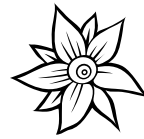


©2021 The Quilt Factory/Debra Grogan. All rights reserved. This pattern may not be reproduced or shared. Pattern may be used by one person for personal use or to make finished goods for charities, sale in retail and on-line shops or craft fairs, but may not be mass produced. We have made every attempt to provide you with accurate information, if you have any questions please email us at: [Deb@thequiltfactory.com](mailto:Deb@thequiltfactory.com)

# Gathering Stars

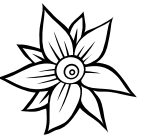


Quilt Pattern 91 x 91  
#QF-2105



# Gathering Stars

Necessities for a 91 x 91 inch Quilt



Fabric A Large tonal coral on cream 1 7/8 yards  
Border 2  
Moda Sister Bay 44270-23

Fabric B Tonal coral on dark blue 7/8 yard  
Block  
Moda Sister Bay 44271-14

Fabric C Tonal coral on lt. sage green 2 1/8 yards  
Block  
Moda Sister Bay 44271-23

Fabric D Sm. tonal coral on dark blue 1 1/4 yards  
Sashing posts, border 1, binding  
Moda Sister Bay 44273-14

Fabric E Sm. tonal coral on cream 2 1/8 yards  
Block  
Moda Sister Bay 44273-21

Fabric F Sm. lt. sage green coral /cream 7/8 yard  
Block  
Moda Sister Bay 44277-11

Fabric G Sm. drk. blue coral/lt sage green 7/8 yard  
Sashing  
Moda Sister Bay 44277-13

Backing fabric of choice 8 1/4 yards 44 inches or 1 5/8 yards 90 inch wide

Batting 2 3/4 yards 108 inch wide or packaged King

**Notions and Such:** Matching thread for seams.

**Recommended Tools:** Rotary cutter, mat and ruler.

WS \$5.00

the QUILT FACTORY

Pattern designs by Deb Grogan  
Email: [Deb@thequiltfactory.com](mailto:Deb@thequiltfactory.com)  
[www.thequiltfactory.com](http://www.thequiltfactory.com)

Gathering Stars QF-2105

moda  
UNITED NOTIONS

Fabric for our sample quilt generously supplied by Moda Fabrics.



©2021 The Quilt Factory/Debra Grogan. All rights reserved. This pattern may not be reproduced or shared. Pattern may be used by one person for personal use or to make finished goods for charities, sale in retail and on-line shops or craft fairs, but may not be mass produced. We have made every attempt to provide you with accurate information, if you have any questions please email us at: [Deb@thequiltfactory.com](mailto:Deb@thequiltfactory.com)

# Garden Party



A Fun Pieced Quilt Pattern 70 x 84

#QF-2101



# Garden Party

A 70 x 84 inch Quilt Pattern



Fabric A Large coral on cream 1 5/8 yards  
Border 2  
Moda Summer Breeze 33610-11

Fabric M Tiny coral on yellow 1/4 yard  
Block, border 2 corners  
Moda Summer Breeze 33615-17

Fabric B Large blue coral on cream 1/8 yard  
Block  
Moda Summer Breeze 33611-12

Fabric N Tiny coral on lt blue 1/8 yard  
Block  
Moda Summer Breeze 33615-19

Fabric C Blue coral on blue 1/8 yard  
Block  
Moda Summer Breeze 33612-13

Fabric O Tiny coral on dark blue 1 5/8 yard  
Block  
Moda Summer Breeze 33615-21

Fabric D Small coral on cream 1/4 yard  
Block  
Moda Summer Breeze 33613-11

Fabric P Tonal cream texture 2 1/8 yards  
Block  
Moda Summer Breeze 33616-11

Fabric E Small coral on yellow 1/8 yard  
Block  
Moda Summer Breeze 33613-13

Fabric Q Tonal lt blue texture 1/2 yard  
Block  
Moda Summer Breeze 33616-16

Fabric F Small coral on lt blue 1/8 yard  
Block  
Moda Summer Breeze 33613-15

Fabric R Tonal dark blue texture 1 yard  
Block, binding  
Moda Summer Breeze 33616-20

Fabric G Small coral on dark blue 3/4 yard  
Block  
Moda Summer Breeze 33613-17

Backing fabric of choice 5 1/8 yards 44 inches  
or 2 5/8 yards 90 inch wide  
Batting 2 5/8 yards 90 inch wide or pack  
aged full.

Fabric H Small blue coral tonal 1/4 yard  
Block  
Moda Summer Breeze 33613-18

**Notions and Such:** Matching thread for  
seams.  
Cosmo Embroidery floss #154 Grey 1 skien  
Embroidery needle

Fabric I Paisley on cream 1/8 yard  
Block  
Moda Summer Breeze 33614-11

**Recommended Tools:** Rotary cutter, mat  
and ruler.

Fabric J Blue tonal paisley on cream 1/4 yard  
Block  
Moda Summer Breeze 33614-12

Fabric K Paisley on yellow 3/8 yard  
Block  
Moda Summer Breeze 33614-13

Fabric L Tiny coral on cream 1/4 yard  
Block  
Moda Summer Breeze 33615-15

the QUILT FACTORY

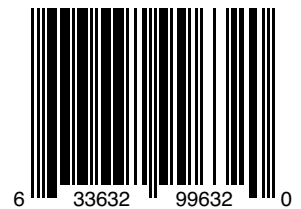
Pattern designs by Deb Grogan  
Email: Deb@thequiltfactory.com  
www.thequiltfactory.com

Garden Party QF-2101

WS \$6.00

moda  
UNITED NOTIONS

Fabric for our sample quilt  
generously supplied by Moda



©2021 The Quilt Factory/Debra Grogan. All rights reserved. This pattern may not be reproduced or shared. Pattern may be used by one person for personal use or to make finished goods for charities, sale in retail and on-line shops or craft fairs, but may not be mass produced. We have made every attempt to provide you with accurate information, if you have any questions please email us at: Deb@thequiltfactory.com

# Celebrate



58 x 72 inch Quilt Pattern

#QF-2100



# Celebrate

A 58 x 72 inch Quilt Pattern



Fabric A Floral on blue grid 1 <sup>1</sup>/<sub>4</sub> yards  
Border 2  
Moda Belle Isle 14921-15

Fabric B Large white stars on red 1/8 yard  
Block  
Moda Belle Isle 14922-12

Fabric C Paisley on red 5/8 yard  
Block  
Moda Belle Isle 14923-12

Fabric D Floral on dots/cream 1/8 yard  
Block  
Moda Belle Isle 14925-11

Fabric E Floral on dots/light blue 3/4 yard  
Block  
Moda Belle Isle 14925-14

Fabric F Floral on dots/dark blue 1/2 yard  
Block, Appliqué  
Moda Belle Isle 14925-15

Fabric G Floral vine on blue 3/8 yard  
Block  
Moda Belle Isle 14926-15

Fabric H Floral vine on cream 3/4 yard  
Appliqué background  
Moda Belle Isle 14926-22

Fabric I Cream dot 1 <sup>3</sup>/<sub>4</sub> yards  
Block  
Moda Belle Isle 14927-11

Fabric J Red dot 1 <sup>3</sup>/<sub>8</sub> yards  
Border 1, block, sashing, binding.  
Moda Belle Isle 14927-12

Backing fabric of choice 4 <sup>1</sup>/<sub>2</sub> yards 44 inches  
or 2 <sup>1</sup>/<sub>4</sub> yards 90 inch wide  
Batting 2 <sup>1</sup>/<sub>4</sub> yards 90 inch wide or pack  
aged twin

**Notions and Such:** Matching thread for  
seams and blue for appliqué.  
Fusible web we recommend Soft Fuse 1 <sup>1</sup>/<sub>2</sub>  
yards.  
Light box/source

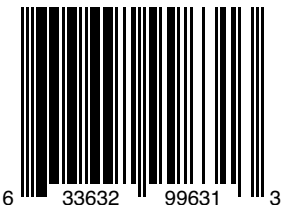
**Recommended Tools:** Rotary cutter, mat  
and ruler.

WS \$5.00

the QUILT FACTORY

Pattern designs by Deb Grogan  
Email: [Deb@thequiltfactory.com](mailto:Deb@thequiltfactory.com)  
[www.thequiltfactory.com](http://www.thequiltfactory.com)

Celebrate QF-2100



6 33632 99631 3

moda  
UNITED NOTIONS

Fabric for our sample quilt generously  
supplied by Moda Fabrics.

©2021 The Quilt Factory/Debra Grogan. All rights reserved. This pattern may not be reproduced or shared. Pattern may be used by one person for personal use or to make finished goods for charities, sale in retail and on-line shops or craft fairs, but may not be mass produced. We have made every attempt to provide you with accurate information, if you have any questions please email us at: [Deb@thequiltfactory.com](mailto:Deb@thequiltfactory.com)



# Beach Baby



An 45 x 65 inch Quilt Pattern

Fabric A Large floral on cream 7/8 yard  
Border 2  
Moda Love Lilly 24110-11

Fabric N Hearts and flowers on purple FQ  
Appliqué  
Moda Love Lilly 24115-19

Fabric B Large floral on red FQ  
Appliqué  
Moda Love Lilly 24110-12

Fabric O Multi colored tiny stars on cream 3/8 yard  
Appliqué background  
Moda Love Lilly 24116-11

Fabric C Blue floral on cream FQ  
Appliqué  
Moda Love Lilly 24111-17

Fabric P White tiny stars on green Fat 1/8th  
Appliqué  
Moda Love Lilly 24116-16

Fabric D Purple floral on cream Fat 1/8th  
Appliqué  
Moda Love Lilly 24111-18

Fabric Q White tiny stars on white 1 yard  
Appliqué background  
Moda Love Lilly 24116-21

Fabric E Floral on green FQ  
Appliqué  
Moda Love Lilly 24112-15

Fabric R Black Solid FQ  
Appliqué  
Moda Bella Solid 9900-99

Fabric F Large pink scribble dot Fat 1/8th  
Appliqué  
Moda Love Lilly 24113-13

Backing fabric of choice 3 yards 44 inches  
or 1 1/2 yards 90 inch wide  
Batting 1 1/2 yards 90 inch wide

Fabric G Large orange scribble dot Fat 1/8th  
Appliqué  
Moda Love Lilly 24113-14

**Notions and Such:** Matching thread for seams and appliqué, blue, lime green, pink, red, purple, orange, aqua, black  
Fusible web we recommend Soft Fuse 2 1/2 yards.  
Light box/source  
Optional: eight white 5/8 inch buttons and three green 5/8 inch buttons

Fabric H Large green scribble dot Fat 1/8th  
Appliqué  
Moda Love Lilly 24113-15

Fabric I Large aqua scribble dot 1 1/8 yards  
Border 1, border 2 corner, sashing, binding.  
Moda Love Lilly 24113-17

**Recommended Tools:** Rotary cutter, mat and ruler.

Fabric J Pink geometric Fat 1/8th  
Appliqué  
Moda Love Lilly 24114-13

Fabric K Blue geometric Fat 1/8th  
Appliqué  
Moda Love Lilly 24114-18

**WS \$14.00**

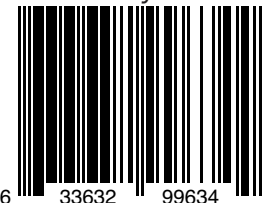
Fabric L Hearts and flowers on red FQ  
Appliqué  
Moda Love Lilly 24115-12

Fabric M Hearts and flowers on teal Fat 1/8th  
Appliqué  
Moda Love Lilly 24115-17

Fabric for our sample quilt  
generously supplied by Moda

moda  
UNITED NOTIONS

Beach Baby QF-2103



©2021 The Quilt Factory/Debra Grogan. All rights reserved. This pattern may not be reproduced or shared. Pattern may be used by one person for personal use or to make finished goods for charities, sale in retail and on-line shops or craft fairs, but may not be mass produced. We have made every attempt to provide you with accurate information, if you have any questions please email us at: Deb@thequiltfactory.com

An Appliqué Quilt Pattern 45 x 65

#QF-2103

the QUILT FACTORY

# Eastern Influence



An Applique Quilt Pattern  
82 x 82 inches  
#QF-2015



# Eastern Influence

An 82 x 82 inch Quilt Pattern



Fabric A Large coral 1 7/8 yards  
Border 2  
Moda Sanctuary 44250-21

Fabric B Lt. Aqua with dots/ flowers 1/4 yard  
Block  
Moda Sanctuary 44251-13

Fabric C White on Aqua lrg. coral 2 1/4 yards  
Block, Corner block  
Moda Sanctuary 44252-13

Fabric D Lt. Aqua tonal large coral 1 1/8 yards  
Corner block, Sashing posts  
Moda Sanctuary 44252-23

Fabric E Mini coral on dark grey 1 3/4 yards  
Applique, Sashing, Border 1, Binding  
Moda Sanctuary 44253-16

Fabric F Dark grey tonal mini coral 1 yard  
Applique  
Moda Sanctuary 44254-26

Fabric G Coral tonal mini coral FQ yard  
Applique  
Moda Sanctuary 44255-12

Fabric H Aqua tonal mini vine 1/4 yard  
Block  
Moda Sanctuary 44255-13

Fabric I Dark coral tonal mini vine 1/2 yard  
Applique  
Moda Sanctuary 44255-14

Fabric J Lt. grey tonal mini vine 1/2 yard  
Applique  
Moda Sanctuary 44255-15

Fabric K Dark grey tonal mini vine 1/4 yard  
Block  
Moda Sanctuary 44255-16

Fabric L White with aqua dots 1 3/8 yards  
Block, Corner block  
Moda Sanctuary 44257-21

Fabric M Lt. grey with white dots Fat 1/8th  
Applique  
Moda Sanctuary 44257-25

Fabric N Dark grey with white dots Fat 1/8th  
Applique  
Moda Sanctuary 44257-26

Backing fabric of choice 7 1/2 yards 44 inches  
or 2 1/2 yards 90 inch wide  
Batting 2 1/2 yards 90 inch wide or pack  
aged Queen

**Notions and Such:** Matching thread for  
seams and appliqué, dark coral, coral and  
light and dark grey.

Cosmo embroidery floss #476 Dark grey .  
Embroidery needle

Freezer paper, spray starch and brush, con-  
tainer with lid, fabric appliqué glue, water  
soluble quilt marker, scissors.  
Clover mini iron or regular iron, ironing  
board

**Recommended Tools:** Rotary cutter, mat  
and ruler.  
Light box or light source.

## the QUILT FACTORY

Pattern designs by Deb Grogan  
Email: [Deb@thequiltfactory.com](mailto:Deb@thequiltfactory.com)  
[www.thequiltfactory.com](http://www.thequiltfactory.com)

Eastern Influence QF-2015

**WS \$6.00**

moda  
UNITED NOTIONS

Fabric for our sample quilt generously supplied  
by Moda Fabrics.



©2020 The Quilt Factory/Debra Grogan. All rights reserved. This pattern may not be reproduced or shared. Pattern may be used by one person for personal use or to make finished goods for charities, sale in retail and on-line shops or craft fairs, but may not be mass produced. We have made every attempt to provide you with accurate information, if you have any questions please email us at: [Deb@thequiltfactory.com](mailto:Deb@thequiltfactory.com)

# Bee My Honey



## An Appliqué Table Square Pattern

57 x 57

#QF-2014



# Bee My Honey



Necessities for a 57 x 57 inch Table Square

Fabric A - 5 x 5 pre-cut squares 1 pack  
OR-1 yard various prints at least 5 x 5 inches.  
Quilt center  
Moda Solana 48680PP

Fabric B - Large sunflowers on orange 1 4 yards  
Corner triangles, Border 2  
Moda Solana 48680-18

Fabric C - Green line florals on off white 1 ya  
Applique blocks and Corner triangles  
Moda Solana 48682-11

Fabric D - Orange line florals on yellow Fat 8t  
Applique  
Moda Solana 48682-13

Fabric E - Dark blue line florals on blue Fat 8t  
Applique  
Moda Solana 48682-17

Fabric F - Orange line florals on peach Fat 8t  
Applique  
Moda Solana 48682-19

Fabric G - Ladybugs on green 1 14 yards  
Border 1, Corner blocks, Binding  
Moda Solana 48684-15

Fabric H - White seeds on off white 1 yard  
Quilt center, Applique  
Moda Solana 48686-21

Fabric I - Black geometric grid Fat 8th  
Applique  
Moda Thatched 48626-117

Fabric J - Yellow geometric grid FQ  
Applique  
Moda Thatched 48626-133

Fabric K - Green geometric grid Fat 8th  
Applique  
Moda Thatched 48626-135

Fabric L - Orange geometric grid Fat 8th  
Applique  
Moda Thatched 48626-138

Backing fabric of choice 3 1/2 yards 44 inch  
wide (pieced) or 1 3/4 yards 90 inches wide.

Batting 1 3/4 yards 90 inches wide or Twin  
package.

Fusible web 1 1/2 yards  
\*We recommend Soft Fuse

Black, grey and orange embroidery floss or  
#8 pearl cotton  
Embroidery hoop and needle

Water soluble quilt marker

### Recommended Tools:

Rotary cutter, mat and ruler. Iron. Light box  
or light source.

**WS \$6.00**

the QUILT FACTORY

Pattern designs by Deb Grogan  
Email: [Deb@thequiltfactory.com](mailto:Deb@thequiltfactory.com)  
[www.thequiltfactory.com](http://www.thequiltfactory.com)

Bee My Honey QF-2014



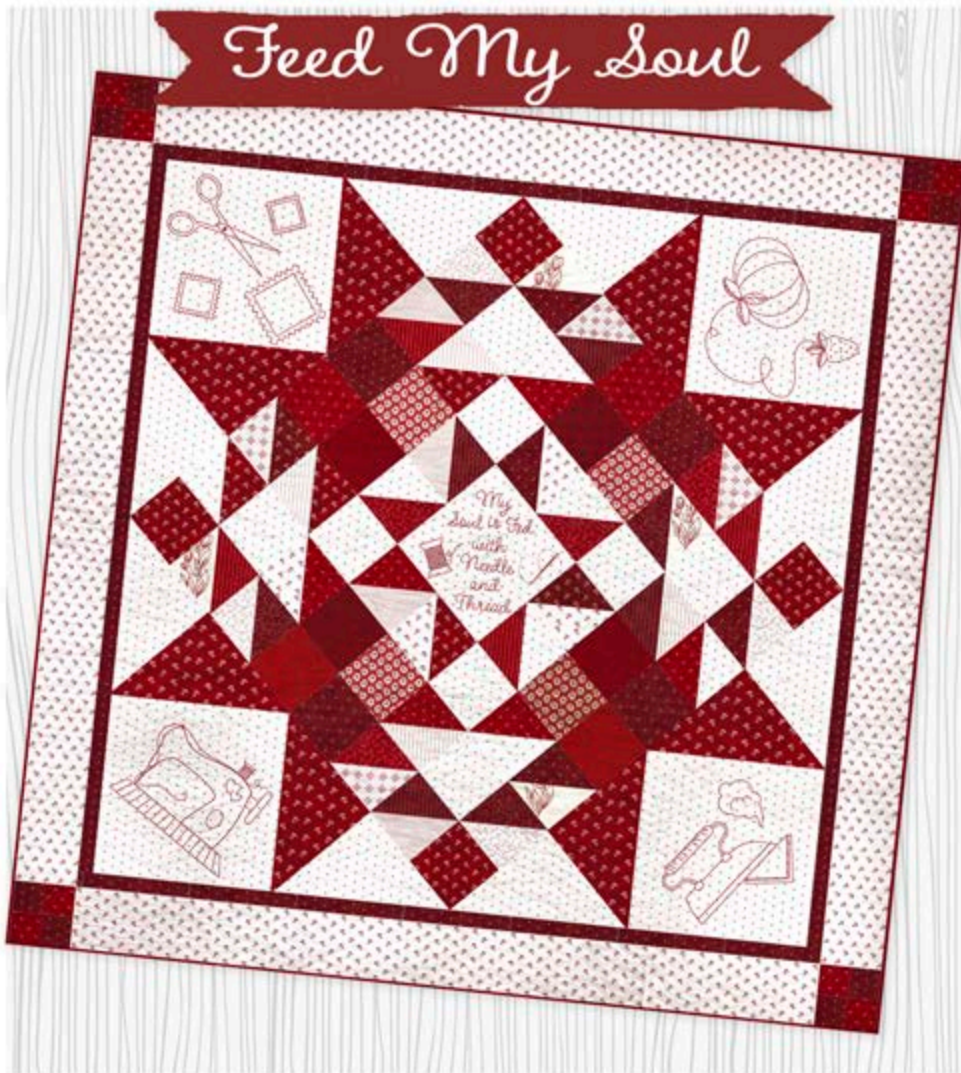
moda  
UNITED NOTIONS

Fabric for our sample quilt generously supplied  
by Moda Fabrics.

©2020 The Quilt Factory/Debra Grogan. All rights reserved. This pattern may not be reproduced or shared. Pattern may be used by one person for personal use or to make finished goods for charities, sale in retail and on-line shops or craft fairs, but may not be mass produced. We have made every attempt to provide you with accurate information, if you have any questions please email us at: [Deb@thequiltfactory.com](mailto:Deb@thequiltfactory.com)



# Feed My Soul



A 57 x 57 inch Table Square  
with Hand Embroidery

5 x 5 Pre-Cut Friendly

#QF-2006



# Feed My Soul

A Pattern 57 x 57 inch Quilt Pattern

Fabric A Red mini or al 3/4 yard  
Block, Border 2 corners, Binding  
Moda Redwork Gatherings 49113-14

Fabric B Cream mini or al 3/4 yard  
Border 2  
Moda Redwork Gatherings 49114-14

Fabric C Red mini or al 2/3 yard  
Block, Corner triangles  
Moda Redwork Gatherings 49114-14

Fabric D Cream mini geometric 1 3/8 yards  
Block, Applique square, Corner triangles  
Moda Redwork Gatherings 49115-11

Fabric E Dark red geometric 1/2 yard  
Block, Border 1, Border 2 corners  
Moda Redwork Gatherings 49115-15

Fabric F Dark reds, reds, cream/red mini  
prints  
5 x 5 Pre-Cut 1 pack  
OR 1 1/8 yards of scraps at least 5 inches wide  
Center Medallion  
Moda Redwork Gatherings 49110 PP

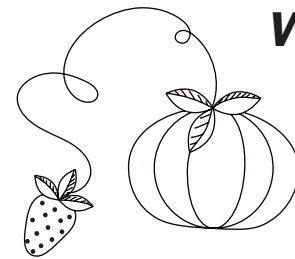
Backing fabric of choice 3 1/2 yards 44 inches  
or 1 3/4 yards 90 inch wide

Batting 1 3/4 yards 90 inch wide or pack-  
aged Twin

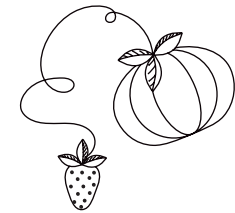
**Notions and Such:** Matching thread for  
seams. Cosmo Embroidery Floss #286-245  
Drk. Red, 2 skeins  
Embroidery needle, hoop.  
Water soluble quilt marker and light  
source.

2 Yards fusible interfacing (optional but  
helps stabilize fabric when doing embroi-  
dery)

**Recommended Tools:** Rotary cutter, mat  
and ruler.



**WS \$6.00**



the QUILT FACTORY

Pattern designs by Deb Grogan  
Email: [Deb@thequiltfactory.com](mailto:Deb@thequiltfactory.com)  
[www.thequiltfactory.com](http://www.thequiltfactory.com)

Feed My Soul QF-2006

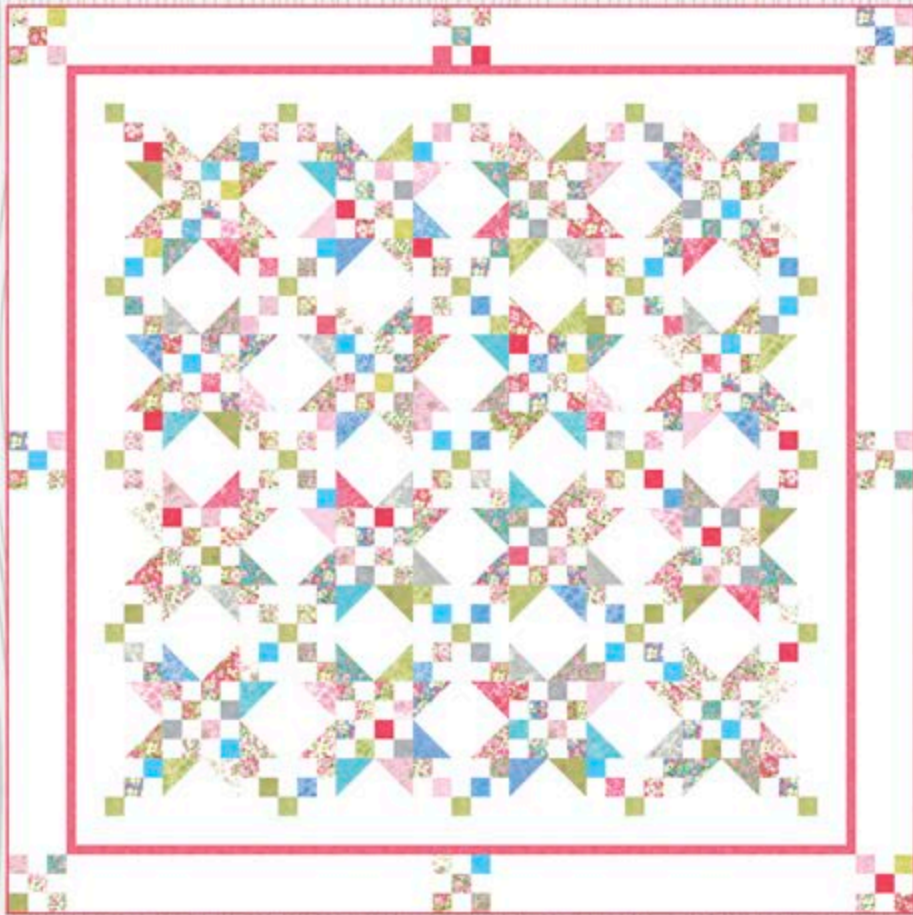


moda  
UNITED NOTIONS

Fabric for our sample quilt generously supplied  
by Moda Fabrics.

©2020 The Quilt Factory/Debra Grogan. All rights reserved. This pattern may not be reproduced or shared. Pattern may be used by one person for personal use or to make finished goods for charities, sale in retail and on-line shops or craft fairs, but may not be mass produced. We have made every attempt to provide you with accurate information, if you have any questions please email us at: [Deb@thequiltfactory.com](mailto:Deb@thequiltfactory.com)

## Star Crossed



*A 94 x 94 inch Quilt Pattern  
Pre-Cut Friendly*

#QF-1702



## Star Crossed

Necessities for a 94 x 94 inch Quilt



Fabric A Viney spray o! white 6  $\frac{1}{2}$  yards  
Blocks, Border 1, Border 3, Sashing  
Moda Sakura Park 33485-11

Fabric B Chartreuse 1/4 yard  
Sashing posts.  
Moda Sakura Park 33485-14

Fabric C Medium Pink 1  $\frac{1}{2}$  yards  
Border 2, binding.  
Moda Sakura Park 33485-17

Fabric D 10 x 10 inch Layer Cake  
Moda Sakura Park 33480LC  
Or four 5 x 5 inch Charm Packs  
Moda Sakura Park 33480PP  
Or for scrappy look 3 yards misc. fabric  
at least 5 inches wide

Binding included in Fabric C calculations.

Backing fabric of choice 8  $\frac{1}{2}$  yards of  
44" or 3 yards 108 inch

Batting 3 yards 108 wide or a 120 x 120  
packaged batting

**Notions and Such:** Matching thread  
for seams

**Recommended Tools:** Rotary cutter,  
mat and ruler.

**WS \$5.00**

the QUILT FACTORY

Pattern designs by Deb Grogan  
Email: [Deb@thequiltfactory.com](mailto:Deb@thequiltfactory.com)  
[www.thequiltfactory.com](http://www.thequiltfactory.com)  
Star Crossed QF-1702

moda  
UNITED NOTIONS

Fabric for our sample quilt generously supplied by  
Moda Fabrics.



©2019 The Quilt Factory/Debra Grogan. All rights reserved. This pattern may not be reproduced or shared. Pattern may be used by one person for personal use or to make finished goods for charities, sale in retail and on-line shops or craft fairs, but may not be mass produced. We have made every attempt to provide you with accurate information, if you have any questions please email us at: [Deb@thequiltfactory.com](mailto:Deb@thequiltfactory.com)

# Ocean Current



An 86 x 86 inch Quilt Pattern

#QF-2005



# Ocean Current

86 x 86 inch Quilt



Fabric A Green leaf trails 1 1/2" yards  
Blocks  
Moda Splendor Batiks 4354-11

Fabric B Green swirls # \$yard  
Blocks  
Moda Splendor Batiks 4354-12

Fabric C Green basket weave # \$yard  
Blocks  
Moda Splendor Batiks 4354-13

Fabric D Green beech leaves 1 % yards  
Border 2  
Moda Splendor Batiks 4354-15

Fabric E Aqua/green marble # \$yard  
Blocks  
Moda Splendor Batiks 4354-18

Fabric F Green/blue herringbone # \$yard  
Blocks  
Moda Splendor Batiks 4354-20

Fabric G Blue marble # \$yard  
Blocks  
Moda Splendor Batiks 4354-21

Fabric H Blue swirls # \$yards  
Blocks  
Moda Splendor Batiks 4354-22

Fabric I Dark blue marble 2 1/2" yards  
Blocks, border 1, binding  
Moda Splendor Batiks 4354-23

Backing fabric of choice 7 # \$ yards 44 inches or 2 & " yards 108 inch wide.

Batting 2 & " yards 108 inch wide or packaged Queen

**Notions and Such:** Matching thread for seams.

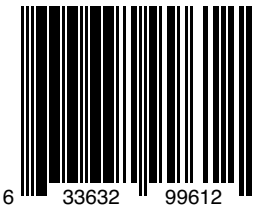
**Recommended Tools:** Rotary cutter, mat and ruler.

**WS \$5.00**

the QUILT FACTORY

Pattern designs by Deb Grogan  
Email: [Deb@thequiltfactory.com](mailto:Deb@thequiltfactory.com)  
[www.thequiltfactory.com](http://www.thequiltfactory.com)

Ocean Current QF-2005

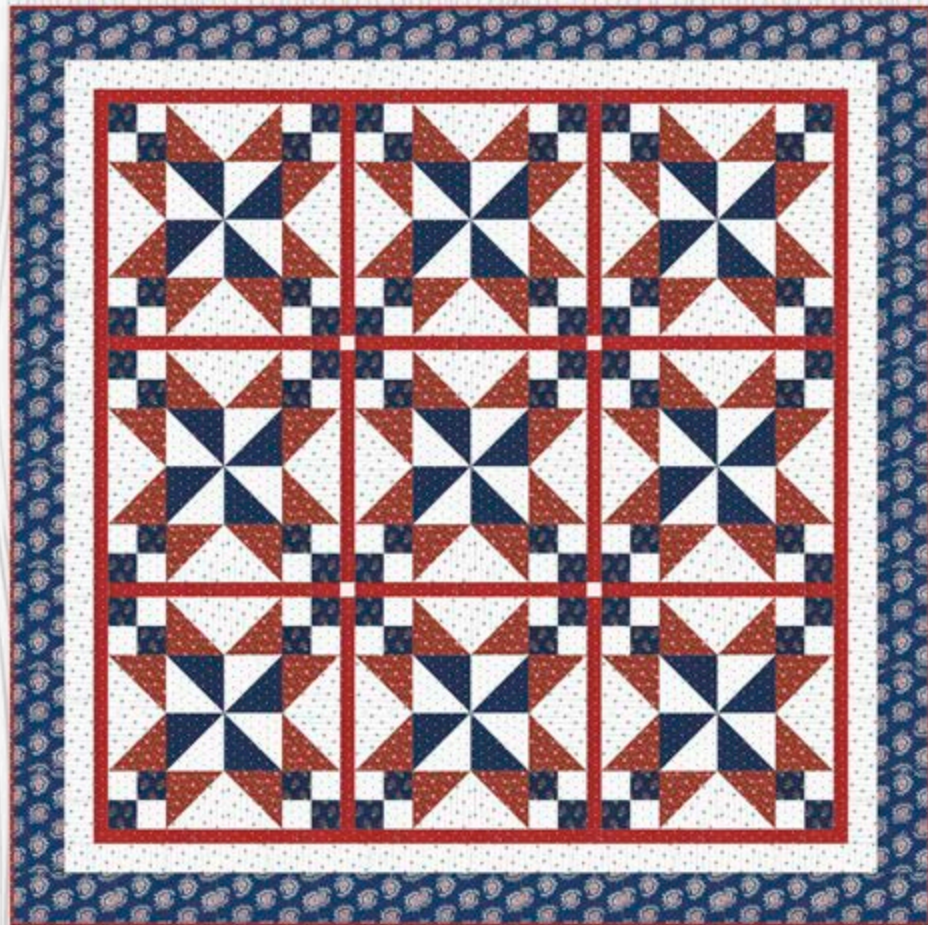


moda  
UNITED NOTIONS

Fabric for our sample quilt generously supplied by Moda Fabrics.

©2020 The Quilt Factory/Debra Grogan. All rights reserved. This pattern may not be reproduced or shared. Pattern may be used by one person for personal use or to make finished goods for charities, sale in retail and on-line shops or craft fairs, but may not be mass produced. We have made every attempt to provide you with accurate information, if you have any questions please email us at: [Deb@thequiltfactory.com](mailto:Deb@thequiltfactory.com)

# Americana



A 63 x 63 inch Quilt Pattern

#QF-2007



# Americana



A 63 x 63 inch Quilt Pattern

Fabric A Medium blue paisley 1 yard  
Border 3  
Moda Harbor Springs 14901-13

Fabric B Navy berries 3/8 yard  
Block  
Moda Harbor Springs 14902-14

Fabric C Red mini floral 3/4 yard  
Block  
Moda Harbor Springs 14904-16

Fabric D Cream/blue stars 1 yard  
Block, Sashing posts  
Moda Harbor Springs 14906-11

Fabric E Navy/cream stars 1/2 yard  
Block  
Moda Harbor Springs 14906-14

Fabric F Red/cream stars 1 1/2 yards  
Sashing, Border 1, Binding  
Moda Harbor Springs 14906-16

Fabric G Cream/charcoal stripe 1 1/2 yards  
Block, Border 2  
Moda Harbor Springs 14907-28

Backing fabric of choice 4 yards 44 inches  
or 2 yards 90 inch wide.

Batting 2 yards 90 inch wide or packaged  
Twin

**Notions and Such:** Matching thread for  
seams.

**Recommended Tools:** Rotary cutter, mat  
and ruler.

**WS \$5.00**

the QUILT FACTORY

Pattern designs by Deb Grogan  
Email: [Deb@thequiltfactory.com](mailto:Deb@thequiltfactory.com)  
[www.thequiltfactory.com](http://www.thequiltfactory.com)

Americana QF-2007

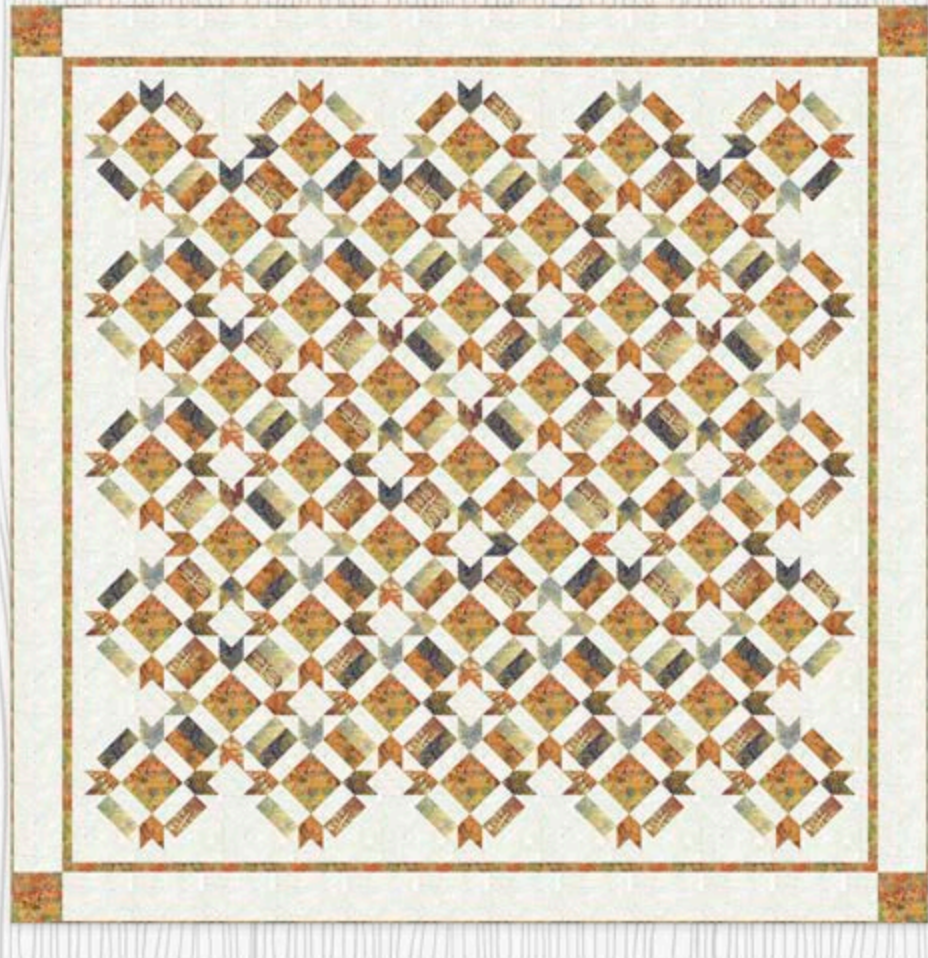
moda  
UNITED NOTIONS

Fabric for our sample quilt generously supplied  
by Moda Fabrics.



©2020 The Quilt Factory/Debra Grogan. All rights reserved. This pattern may not be reproduced or shared. Pattern may be used by one person for personal use or to make finished goods for charities, sale in retail and on-line shops or craft fairs, but may not be mass produced. We have made every attempt to provide you with accurate information, if you have any questions please email us at: [Deb@thequiltfactory.com](mailto:Deb@thequiltfactory.com)

# Batik Garden

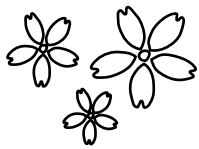


A 93 x 93 inch Quilt Pattern

#QF-1701



# Batik Garden



Necessities for a 93 x 93 inch Quilt

Fabric A Dotted circles grey on ivory 5 1/2 yard  
Block, Border 2, Setting Triangles  
Moda Santorini Batiks 4355-45

Fabric B Marbled rusts, tans, greens 1 1/2 yard  
Blocks  
Moda Santorini Batiks 4355-41

Fabric C Lrg. leaf in eggplant, rust, tan, grey 1 1/2 yard  
Blocks  
Moda Santorini Batiks 4355-42

Fabric D Dotted circles grey, rust, tans 1 1/2 yard  
Blocks  
Moda Santorini Batiks 4355-43

Fabrics E Flowery rust, tan, green 2 # yards  
Block, Border 1, Corner Blocks, Binding  
Moda Santorini Batiks 4355-40

Fabric F Circles/flowers in gold, grey blue 1 1/2 yard  
Blocks  
Moda Santorini Batiks 4355-48

Binding fabric included in the fabric E calculations.

Batting 3 yards 108 inch wide or packaged king size.

Backing fabric of choice 8 # yards of 44 inch wide or  
3 yards of 108 inch wide.

Color fabric guide included inside pattern

*Notions and Such:*

Matching thread for seams.

*Recommended Tools:* Rotary cutter,  
mat and ruler.

**WS \$5.00**

the QUILT FACTORY

Pattern designs by Deb Grogan  
Email: [Deb@thequiltfactory.com](mailto:Deb@thequiltfactory.com)  
[www.thequiltfactory.com](http://www.thequiltfactory.com)

Batik Garden QF-1701

moda  
UNITED NOTIONS

Fabric for our sample quilt generously supplied by  
Moda Fabrics.



©2019 The Quilt Factory/Debra Grogan. All rights reserved. This pattern may not be reproduced or shared. Pattern may be used by one person for personal use or to make finished goods for charities, sale in retail and on-line shops or craft fairs, but may not be mass produced. We have made every attempt to provide you with accurate information, if you have any questions please email us at: [Deb@thequiltfactory.com](mailto:Deb@thequiltfactory.com)

# Sweet Liberty



AN APPLIQUE THROW

38 x 48 inches

QF-1720



# Sweet Liberty



Necessities for a 38 x 48 inch Throw

Fabric A Gold Herringbone  
3/4 yard or 24 x 26 inch piece for background.  
Maywood Studios MASF1841-E

Binding 1/4 yard  
Maywood Studios MASF18502-R

Backing fabric of choice 1 1/2 yards.

Fabric B Tan Herringbone 1 1/2 yards  
Background pieces for ribbon/leaf spray, sampler blocks, border geese and eagle shield appliqué.  
Maywood Studios MASF1841-T

Batting Packaged crib size or 1 1/2 yards of 45 inch wide.

Fabric C Gold Plaid 1/4 yard  
Border sections.  
Maywood Studios MASF18502-OO

Fusible Web 1 1/2 yard. We recommend Soft Fuse.

Fabric D Blue Small Houndstooth 7/8 yard  
Sampler blocks, border geese, eagle and flower appliqués.  
Maywood Studios MASF18122-N2

**Notions and Such:** Matching thread for seams.  
For appliqué:  
We used the following Sulky 12 wt. Cotton Petites:  
(Item numbers are Sulky, color names are not)  
DEEP GOLD 712-1826  
MED OLIVE GREEN 712-1158  
DEEP RED 712-1169  
MED GREY BLUE 712-1283  
DEEP IVORY 712-1149  
MED RED 712-1039

Fabric E Red with Black Dots 5/8 yard  
Border appliqué backgrounds, arrow and bow appliqués.  
Maywood Studios MASF18506-R

Water soluble quilt marker, embroidery hoop, needle and iron.

Fabric F Green Herringbone 3/8 yard  
Leaves and stems appliqués.  
Maywood Studios MASF1841-G

Buttons: One 1/8 inch black for eagle eye.

Fabric G Red Small Houndstooth 1/2 yard  
Sampler blocks, star and flower appliqués.  
Maywood Studios MASF18122-R3

**Recommended Tools:** Rotary cutter, mat and ruler.

## WS \$12.50

Fabric H Gold Small Plaid 3/8 yard  
Star, arch, flower center, eagle wing and tail appliqués.  
Maywood Studios MASF18141-S



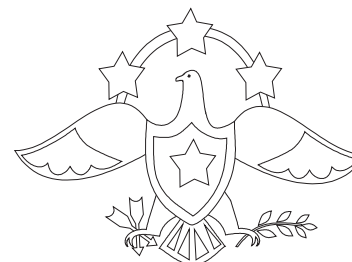
Fabric I Green Small Plaid  
6x6 inch piece for eagle stem/leaf appliqué  
Maywood Studios MASF18122-G2

## MAYWOOD STUDIO

Fabric for our sample quilt generously supplied by Maywood Studios

Pattern designs by Deb Grogan  
Email: [Deb@thequiltfactory.com](mailto:Deb@thequiltfactory.com)  
[www.thequiltfactory.com](http://www.thequiltfactory.com)

### Sweet Liberty QF-1720



## the QUILT FACTORY

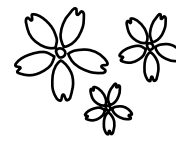
©2017 The Quilt Factory/Debra Grogan. All rights reserved. This pattern may not be reproduced or shared. Pattern may be used by one person for personal use or to make finished goods for charities, sale in retail and on-line shops or craft fairs, but may not be mass produced. We have made every attempt to provide you with accurate information, if you have any questions please email us at: [Deb@thequiltfactory.com](mailto:Deb@thequiltfactory.com)

# Summer Rain



A 58 x 58 Table Square

#QF-1817



# Summer Rain



Necessities for a 58 x 58 inch Table Square

Fabric A Red flower bunch 3/8 yard  
Block  
Moda All Weather 24060-11

Fabric B Navy flower bunch 1 yard  
Block  
Moda All Weather 24060-16

Fabric C Aqua plaid 1 yard  
Border 2  
Moda All Weather 24062-15

Fabric D Green geometric 1/8 yard  
Sashing posts  
Moda All Weather 24063-14

Fabric E Aqua geometric 3/8 yard  
Block  
Moda All Weather 24063-15

Fabric F White w/pink tiny tulip/dots 7/8 yard  
Block  
Moda All Weather 24064-11

Fabric G Navy tiny tulips/dots 1 1/2 yards  
Sashing, Border 1 and Binding  
Moda All Weather 24064-18

Fabric H Red tiny tulips/dots 1/4 yard  
Block  
Moda All Weather 24064-21

Fabric I Aqua seed 1 # yards  
Block  
Moda All Weather 24065-19

Fabric J Aqua geometric 1/4 yard  
Block  
Moda All Weather 24066-15

Binding included in Fabric G yardage.

Backing fabric of choice 3 3/4 yards 44 inches or 1 1/2 yards 90 inch wide.

Batting 1 1/2 yards 90 inch wide or packaged Twin

**Notions and Such:** Matching thread for seams.

**WS \$5.00**

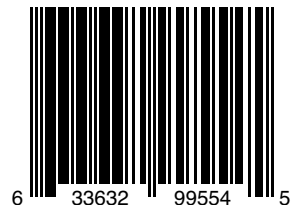
*moda*  
UNITED NOTIONS

Fabric for our sample quilt generously supplied by Moda Fabrics.

the QUILT FACTORY

Pattern designs by Deb Grogan  
Email: [Deb@thequiltfactory.com](mailto:Deb@thequiltfactory.com)  
[www.thequiltfactory.com](http://www.thequiltfactory.com)

Summer Rain QF-1817



©2018 The Quilt Factory/Debra Grogan. All rights reserved. This pattern may not be reproduced or shared. Pattern may be used by one person for personal use or to make finished goods for charities, sale in retail and on-line shops or craft fairs, but may not be mass produced. We have made every attempt to provide you with accurate information, if you have any questions please email us at: [Deb@thequiltfactory.com](mailto:Deb@thequiltfactory.com)

# Starlight



A 63 x 63 inch Quilt Pattern

#QF-1809



# Starlight

Necessities for a 63 x 63 inch Quilt

Fabric A Cream w/taupe leaf 1 1/2 yards  
Blocks 1 and 2, Border 2  
Moda La Vie En Rouge 13824-13

Fabric B Red linen texture 1 yard  
Blocks 1 and 2, Binding  
Moda La Vie En Rouge 13529-23

Fabric C Taupe with cream floral 1/8 yard  
Block 1  
Moda La Vie En Rouge 13822-17

Fabric D Red with small flower 1/4 yard  
Block 1  
Moda La Vie En Rouge 13825-11

Fabric E Red w/cream/taupe floral 5/8 yard  
Blocks 1 and 2, Corner posts Border 2 and 4  
Moda La Vie En Rouge 13822-13

Fabric F Taupe linen texture 1/4 yard  
Block 1  
Moda La Vie En Rouge 13529-22

Fabric G Red w/large taupe floral 1/4 yard  
Block 1  
Moda La Vie En Rouge 13821-11

Fabric H Red w/ taupe small floral 1 yard  
Block 2, Border 1 and 3  
Moda La Vie En Rouge 13826-11

Fabric I Taupe w/cream leaf 1/8 yard  
Block 2  
Moda La Vie En Rouge 13824-17

Fabric J Cream w/taupe small floral 1/8 yard  
Block 2  
Moda La Vie En Rouge 13826-14

Fabric K Cream and taupe hexies 7/8 yard  
Border 4  
Moda La Vie En Rouge 13820-17

Backing fabric of choice 3 #5 yards.

Batting 2 yards 90" wide or packaged twin

**Notions and Such:** Matching thread for seams.

**Recommended Tools:** Rotary cutter, mat and ruler.

**WS \$5.00**

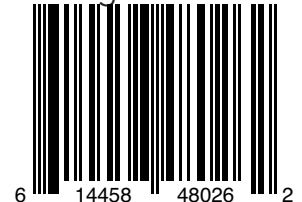
*moda*  
UNITED NOTIONS

Fabric for our sample quilt generously supplied by Moda Fabrics.

the QUILT FACTORY

Pattern designs by Deb Grogan  
Email: [Deb@thequiltfactory.com](mailto:Deb@thequiltfactory.com)  
[www.thequiltfactory.com](http://www.thequiltfactory.com)

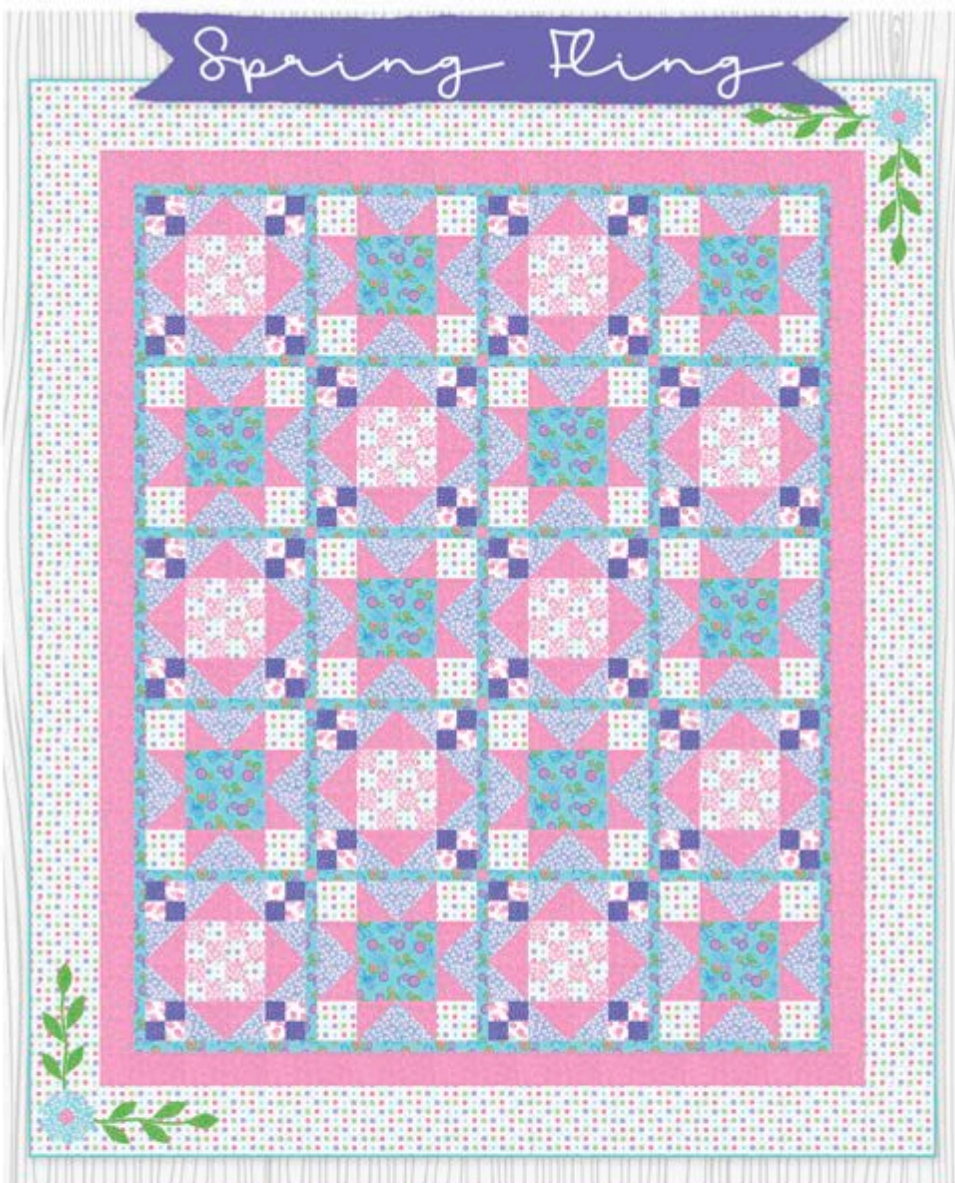
Starlight QF-1809



6 14458 48026 2

©2018 The Quilt Factory/Debra Grogan. All rights reserved. This pattern may not be reproduced or shared. Pattern may be used by one person for personal use or to make finished goods for charities, sale in retail and on-line shops or craft fairs, but may not be mass produced. We have made every attempt to provide you with accurate information, if you have any questions please email us at: [Deb@thequiltfactory.com](mailto:Deb@thequiltfactory.com)





## An Appliqué Pattern 79 x 94 inch Quilt

#QF-1827



# Spring Fling



A 79 x 94 inch Quilt

Fabric A Turquoise large floral 1 1/2 yards  
Block 2, Sashing, Border 1  
Moda Flower Sacks 22350-12

Fabric B White circle floral 2 1/2 yards  
Block 1 and 2, Border 3  
Moda Flower Sacks 22351-15

Fabric C Pink flowers and bows 3/8 yard  
Block 1  
Moda Flower Sacks 22353-15

Fabric D Pink tiny flowers 3/8 yard  
Block 1  
Moda Flower Sacks 22357-11

Fabric E Turquoise tiny flowers 1/8 yard  
Appliqué  
Moda Flower Sacks 22357-12

Fabric F Lavender tiny flowers 1 1/2 yards  
Block 1 and 2  
Moda Flower Sacks 22357-14

Fabric G Pink swirls 2 1/2 yards  
Block 1 and 2, Border 3, Sashing posts  
and Appliqué  
Moda Flower Sacks 22255-31

Fabric H Turquoise dots 5/8 yard  
Binding  
Moda Flower Sacks 22323-32

Fabric I Green dots 1/4 yard  
Appliqué  
Moda Flower Sacks 22323-33

Fabric J Purple dots 3/8 yard  
Block 1  
Moda Flower Sacks 22323-34

Backing fabric of choice 5 1/2 yards 44 inches  
or 2 yards 90 inch wide.

Batting 3 yards 90 inch wide or packaged  
Full

1 yard fusible web

**Notions and Such:** Matching thread for  
seams and appliqué, pink, turquoise and  
green.

**Recommended Tools:** Rotary cutter, mat  
and ruler.

**WS \$5.00**

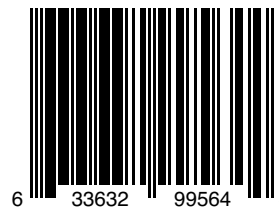
the QUILT FACTORY

Pattern designs by Deb Grogan  
Email: [Deb@thequiltfactory.com](mailto:Deb@thequiltfactory.com)  
[www.thequiltfactory.com](http://www.thequiltfactory.com)

Spring Fling QF-1827

moda  
UNITED NOTIONS

Fabric for our sample quilt generously supplied  
by Moda Fabrics.



©2018 The Quilt Factory/Debra Grogan. All rights reserved. This pattern may not be reproduced or shared. Pattern may be used by one person for personal use or to make finished goods for charities, sale in retail and on-line shops or craft fairs, but may not be mass produced. We have made every attempt to provide you with accurate information, if you have any questions please email us at: [Deb@thequiltfactory.com](mailto:Deb@thequiltfactory.com)

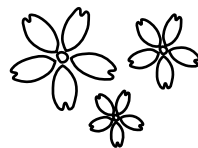
# Serenity



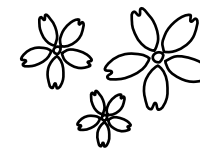
## A QUEEN QUILT

96 x 96

QF-1716



# Serenity



Necessities for a 96 x 96 inch Quilt

Fabric A Light cream marble 3 1/2 yards  
Blocks 1 and 2  
Border 2 and Border 4 corner blocks  
Maywood Aged to Perfection MAS102-E

Fabric B Grey damask 2 1/2 yards  
Blocks 1 and 2  
Border 4  
Maywood Aged to Perfection MAS105-K

Fabric C Blue damask 1 1/2 yards  
Blocks 1 and 2  
Border 1  
Binding  
Maywood Aged to Perfection MAS103-N

Fabric D Light blue marble 1 1/2 yards  
Block 1  
Border 3  
Maywood Aged to Perfection MAS102-V

Fabrics E Medium blue marble 1 1/2 yards  
Block 2  
Border 4 corner blocks  
Maywood Aged to Perfection MAS102-N

Binding fabric included in the fabric C calculations.

Batting 3 yards 108 inch wide.

Backing fabric of choice 8 1/2 yards of 44 inch wide or 3 yards of 108 inch wide.

*Notions and Such:*

Matching thread for seams.

*Recommended Tools:* Rotary cutter, mat and ruler.

**WS \$5.00**

Fabric for our sample generously  
supplied by

**MAYWOOD  STUDIO**

**the QUILT FACTORY**

Pattern designs by Deb Grogan  
Email: [Deb@thequiltfactory.com](mailto:Deb@thequiltfactory.com)  
[www.thequiltfactory.com](http://www.thequiltfactory.com)

Serenity QF-1716



6 14458 48052 1

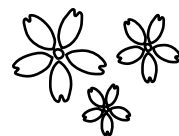
©2017 The Quilt Factory/Debra Grogan. All rights reserved. This pattern may not be reproduced or shared. Pattern may be used by one person for personal use or to make finished goods for charities, sale in retail and on-line shops or craft fairs, but may not be mass produced. We have made every attempt to provide you with accurate information, if you have any questions please email us at: [Deb@thequiltfactory.com](mailto:Deb@thequiltfactory.com)

# Posey Garden



AN 82 X 82 INCH QUILT

QF-1816



# Posey Garden

Necessities for a 82 x 82 inch Quilt



Fabric A Cream all over floral 1 1/2 yards  
Border 2  
Moda Garden Variety 5070-11

Fabric B Navy all over floral 7/8 yard  
Binding, Block  
Moda Garden Variety 5070-12

Fabric C Green /Cream floral 1/4 yard  
Block  
Moda Garden Variety 5070-14

Fabric D Coral all over floral 1 yard  
Block  
Moda Garden Variety 5070-16

Fabric E Navy flower bunch 1 yard  
Sashing post, Block, Border 1  
Moda Garden Variety 5071-12

Fabric F Coral flower bunch 1 yard  
Border 2 corner block, Sashing  
Moda Garden Variety 5071-15

Fabric G Cream bees 2 yards  
Block  
Moda Garden Variety 5073-11

Fabric H Green bees 1/4 yard  
Block  
Moda Garden Variety 5073-14

Binding included in Fabric B yardage.

Backing fabric of choice 7 1/2 yards 44 inches or 2 yards 90 inch wide.

Batting 2 yards 90 inch wide or packaged Queen

**Notions and Such:** Matching thread for seams.

**WS \$5.00**

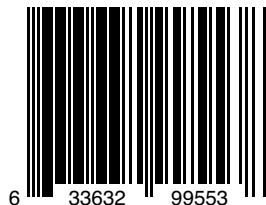
the QUILT FACTORY

Pattern designs by Deb Grogan  
Email: [Deb@thequiltfactory.com](mailto:Deb@thequiltfactory.com)  
[www.thequiltfactory.com](http://www.thequiltfactory.com)

Posey Garden QF-1816

moda  
UNITED NOTIONS

Fabric for our sample quilt generously supplied by Moda Fabrics.



©2018 The Quilt Factory/Debra Grogan. All rights reserved. This pattern may not be reproduced or shared. Pattern may be used by one person for personal use or to make finished goods for charities, sale in retail and on-line shops or craft fairs, but may not be mass produced. We have made every attempt to provide you with accurate information, if you have any questions please email us at: [Deb@thequiltfactory.com](mailto:Deb@thequiltfactory.com)



# Ocean Waves

A Modern Quilt Pattern  
84 x 102  
#QFDG-16003



# Ocean Waves

Necessities for a 84 x 102 inch Quilt



Ocean waves pattern uses nine different batiks. You will need the following yardage.

Six 3/4 yard cuts for the smaller HST units, in similar hues.

One 7/8 yard cuts for the large HST unit, make this a contrasting color and one 7/8 yard cut that will include the border corners.

3 7/8 yards for the border, smaller HST units and large HST's, this is your focal fabric.

BWbQW fabric 5/8 yard.

Batting 3 yards 90 inch wide or packaged queen size.

Backing fabric of choice 5 7/8 yards or 3 yards of 90 inch wide.

Timeless Treasures Tonga Batiks used in our sample.

7/8 yard Tonga B4955 Wisteria

3/4 yard Tonga B5027 Pansy

3/4 yard Tonga B4590 Water

7/8 yard Tonga B2963 Fiji

3/4 yard Tonga B3317 Purple

3/4 yard Tonga B5024 Scuba

3/4 yard Tonga B9833 Lupine

3/4 yard Tonga B9230 Maui

3 7/8 yard Tonga B4886 Aruba

**WS \$5.00**

*Notions and Such:*

Matching thread for seams

Fabric generously supplied by

Timeless Treasures

*Recommended Tools:* Rotary cutter, mat and ruler.



the QUILT FACTORY

Pattern designs by Deb Grogan

Email: Deb@thequiltfactory.com

www.thequiltfactory.com

Ocean Waves QFDG-16003



©2016 The Quilt Factory/Debra Grogan. All rights reserved. This pattern may not be reproduced or shared. Pattern may be used by one person for personal use or to make finished goods for charities, sale in retail and on-line shops or craft fairs, but may not be mass produced. We have made every attempt to provide you with accurate information, if you have any questions please email us at: Deb@thequiltfactory.com

# Rose Crossing



An 80 x 80 Quilt Pattern  
Pre-Cut Friendly  
#QF-1802



## Rose Crossing

Necessities for a 80 x 80 inch Quilt



Fabric A White 3 1/2 yards  
Quilt blocks.  
Moda Bella Solid 9900-98 White

Fabric B Black 1 yard  
Quilt block and binding.  
Moda Bella Solid 9900-99

Fabric C 2 # yards assorted prints  
Quilt blocks.  
OR one 10 x 10 inch layer cake  
Moda Bee Inspired 19790LC

Binding included in Fabric B calculations.

Backing fabric of choice 7 1/2 yards of 44 inch  
or 2 # yards 90 inch.

Batting 2 # yards 90 inch wide or a Queen  
packaged batting.

**Notions and Such:** Matching thread for seams.

**Recommended Tools:** Rotary cutter, mat and  
ruler.

**WS \$5.00**

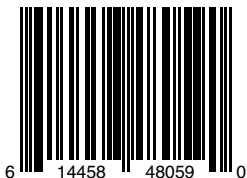
the QUILT FACTORY

Pattern designs by Deb Grogan  
Email: [Deb@thequiltfactory.com](mailto:Deb@thequiltfactory.com)  
[www.thequiltfactory.com](http://www.thequiltfactory.com)

Rose Crossing QF-1802

moda  
UNITED NOTIONS

Fabric for our sample quilt generously supplied by  
Moda Fabrics.



©2018 The Quilt Factory/Debra Grogan. All rights reserved. This pattern may not be reproduced or shared. Pattern may be used by one person for personal use or to make finished goods for charities, sale in retail and on-line shops or craft fairs, but may not be mass produced. We have made every attempt to provide you with accurate information, if you have any questions please email us at: [Deb@thequiltfactory.com](mailto:Deb@thequiltfactory.com)

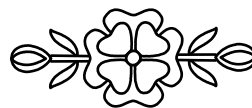
# Miss Scarlet



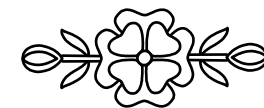
A 96 x 96 inch Quilt Pattern

#QF-1711

the **QUILT FACTORY**



# Miss Scarlet



Necessities for a 96 x 96 inch Quilt

Fabric A Light cream 7 7/8 yards  
Setting triangles (Block 1)  
Block 2

Center medallion and outer appliqué blocks  
Borders 2, 4 and 6, Border 2 setting blocks  
Moda Snow 9900-11

Fabric B Red plaid 1 7/8 yards  
Borders 1, 3 and 5  
Moda Snowfall 14837-22

Fabric C Red tone on tone paisley 1 yard  
Center medallion  
Borders 2 and 4 corner and setting blocks  
Flower and Border 2 appliques  
Moda Snowfall 14833-22

Fabric D Red floral paisley 3/4 yard  
Block 2  
Border 6 setting blocks  
Flower appliques  
Moda Snowfall 14834-12

Fabric E Red mini floral spray 1/2 yard  
Setting triangles (Block 1)  
Block 2  
Flower appliques  
Moda Snowfall 14836-12

Fabric F Cream/red plaid 1/4 yard  
Setting triangles (Block 1)  
Moda Snowfall 14837-12

Fabric G Cream dot 5/8 yard  
Center medallion  
Flower appliques  
Moda Snowfall 14832-11

Fabric H Cream floral paisley 3/8 yard  
Center medallion  
Moda Snowfall 148334-11

Fabric I Cream w/red paisley 1/2 yard  
Block 2  
Center medallion  
Flower appliques  
Moda Snowfall 14833-12

Fabric J Red dot 1/4 yard  
Block 2  
Flower appliques  
Moda Snowfall 14832-12

Fabric K Green mini floral spray 1 7/8 yards  
Flower leaf and stem appliques  
Moda Snowfall 14836-13

Binding fabric 5/8 yard  
Moda Christmas Red 9900-16

Batting 3 yards 108 inch wide.

Backing fabric of choice 8 7/8 yards of 44 inch wide or 3 yards of 108 inch wide.

**Notions and Such:** Matching thread for seams and appliqué, red, o! white and green.

Freezer paper, spray starch and brush, container with lid, fabric appliqué glue, water soluble quilt marker, scissors.

Clover mini iron or regular iron, ironing board

**Recommended Tools:** Rotary cutter, mat and ruler.

Light box or light source.

**WS \$12.00**

Fabric for our sample generously supplied by

*moda*  
UNITED NOTIONS

the **QUILT FACTORY**

Pattern designs by Deb Grogan  
Email: [Deb@thequiltfactory.com](mailto:Deb@thequiltfactory.com)  
[www.thequiltfactory.com](http://www.thequiltfactory.com)

Miss Scarlet QF-1711



6 14458 48047 7

©2017 The Quilt Factory/Debra Grogan. All rights reserved. This pattern may not be reproduced or shared. Pattern may be used by one person for personal use or to make finished goods for charities, sale in retail and on-line shops or craft fairs, but may not be mass produced. We have made every attempt to provide you with accurate information, if you have any questions please email us at: [Deb@thequiltfactory.com](mailto:Deb@thequiltfactory.com)

# Melody



An 89 x 89 inch Quilt

QF-1815



# Melody



Necessities for a 89 x 89 inch Quilt

Fabric A Green mini floral 1/4 yard  
Block 1  
Moda Flower Garden Gatherings 1241-17

Fabric B Blue flower spray 1 1/2 yards  
Block 1 and 2, Border 2 corners  
Moda Flower Garden Gatherings 1242-16

Fabric C Red flower 1/4 yard  
Block 2  
Moda Flower Garden Gatherings 1242-22

Fabric D Green double flower 1/4 yard  
Block 1  
Moda Flower Garden Gatherings 1245-17

Fabric E Red double flower 1 3/4 yards  
Binding, Block 1 and 2, Border 1  
Moda Flower Garden Gatherings 1245-22

Fabric F Tan single flower 1/2 yard  
Block 1 and 2  
Moda Flower Garden Gatherings 1246-26

Fabric G Cream mini floral 3 yards  
Block 1 and 2  
Moda Flower Garden Gatherings 1247-11

Fabric H Tan single flower 2 3/4 yards  
Block 2, Border 2  
Moda Flower Garden Gatherings 1248-12

Fabric I Dark red single flower 5/8 yards  
Block 1 and 2  
Moda Flower Garden Gatherings 1248-12

Fabric J Green single flower 1/4 yards  
Block 1 and 2  
Moda Flower Garden Gatherings 1248-25

Binding included in Fabric E yardage.

Backing fabric of choice 8 yards 44 inches  
or 2 1/2 yards 108 inch wide.

Batting 2 1/2 yards 108 inch wide or pack-  
aged King

**Notions and Such:** Matching thread for  
seams.

**WS \$5.00**

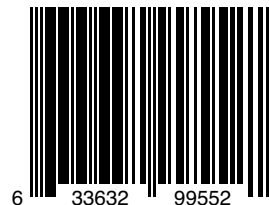
*moda*  
UNITED NOTIONS

Fabric for our sample quilt generously supplied  
by Moda Fabrics.

the QUILT FACTORY

Pattern designs by Deb Grogan  
Email: [Deb@thequiltfactory.com](mailto:Deb@thequiltfactory.com)  
[www.thequiltfactory.com](http://www.thequiltfactory.com)

Melody QF-1815



6 33632 99552 1

©2018 The Quilt Factory/Debra Grogan. All rights reserved. This pattern may not be reproduced or shared. Pattern may be used by one person for personal use or to make finished goods for charities, sale in retail and on-line shops or craft fairs, but may not be mass produced. We have made every attempt to provide you with accurate information, if you have any questions please email us at: [Deb@thequiltfactory.com](mailto:Deb@thequiltfactory.com)

# Let Freedom Ring



AN APPLIQUE QUILT  
96.85 x 96.85

QF-1706



## Let Freedom Ring

Necessities for a 96.85 x 96.85 inch Quilt



Fabric A Dark Red Stars 5/8 yard  
Border 1 and outer eagle wing and tail ball  
feathers appliqué  
Moda Liberty Gatherings 1205-11

Fabric B Tan Flags 1 1/2 yards  
Border 2 and star blocks  
Moda Liberty Gatherings 1204-18

Fabric C Navy Shooting Stars 1/3 yard  
Corners border 2  
Moda Liberty Gatherings 1201-14

Fabric D O# White Stars 3 3/4 yards  
Setting triangles, quilt blocks and eagle inner  
wing appliqué  
Moda Liberty Gatherings 1205-24

Fabric E O# White Shooting Stars 1 1/2 yards  
Quilt blocks, center appliqué block  
Moda Liberty Gatherings 1201-24

Fabric F O# White Flags 3/8 yard  
Quilt blocks  
Moda Liberty Gatherings 1204-24

Fabric G O# White w/ Blue Stars 1/4 yard  
Quilt blocks and border 1 squares, applique  
flower centers  
Moda Liberty Gatherings 1205-23

Fabric H Red Flags 1 1/2 yards  
Quilt blocks  
Moda Liberty Gatherings 1204-11

Fabric I Blue Leaves 3/4 yard  
Quilt blocks, Appliqué eagle body, tail and  
legs  
Moda Liberty Gatherings 1204-15

Fabric J Red Jacks 3/8 yard  
Quilt blocks  
Moda Liberty Gatherings 1207-11

Fabric K Navy Stars 1 1/2 yards  
Appliqué large stars, stems and leaves  
Moda Liberty Gatherings 1205-14

Fabric L Red Leaves 1/2 yard  
Appliqué flower outer and arrows  
Moda Liberty Gatherings 1202-12

Fabric M Tan w/ Red and Blue Leaves 1/2 yard  
Appliqué, shield, arch and flower middles  
Moda Liberty Gatherings 1202-16

Fabric N Red Mini Flowers 5/8 yard  
Appliqué large stars  
Moda Liberty Gatherings 1206-12

Fabric O Red Sprinkles 1/6 yard  
Appliqué stars for eagle and tail triangles  
Moda Liberty Gatherings 1203-12

Binding 3/4 yard \*We used Fabric H Red Flags  
Moda Liberty Gatherings 1204-11

Backing fabric of choice 8 1/2 yards of 44"  
or 3 yards 108 inch

Batting 3 yards 108 wide or a 120 x 120 pack-  
aged batting

**Notions and Such:** Matching thread for seams  
and appliqué, navy, red, tan, o# white.

Embroidery Floss, black for eyes, dark red for  
tail feathers. Embroidery hoop and needle.

Freezer paper, spray starch and brush,  
container with lid, fabric appliqué glue, water  
soluble quilt marker, scissors.

Clover mini iron or regular iron, ironing board

**Recommended Tools:** Rotary cutter, mat and  
ruler.

Light box or light source.

This quilt includes Scan N Cut friendly tem-  
plates

*moda*  
UNITED NOTIONS

Fabric for our sample quilt generously supplied by  
Moda Fabrics.

### the QUILT FACTORY

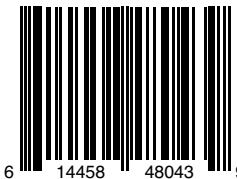
Pattern designs by Deb Grogan

Email: [Deb@thequiltfactory.com](mailto:Deb@thequiltfactory.com)

[www.thequiltfactory.com](http://www.thequiltfactory.com)

Let Freedom Ring QF-1706

**WS \$10.00**



©2017 The Quilt Factory/Debra Grogan. All rights reserved. This pattern may not be reproduced or shared. Pattern may be used by one person for personal use or to make finished goods for charities, sale in retail and on-line shops or craft fairs, but may not be mass produced. We have made every attempt to provide you with accurate information, if you have any questions please email us at:

[Deb@thequiltfactory.com](mailto:Deb@thequiltfactory.com)

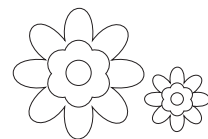


# Kitty Cat Garden



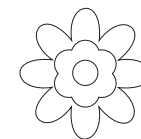
An Applique Throw Pattern 32 x 44

#QF-1721



## Kitty Cat Garden

Necessities for a 32 x 44 inch Fun Throw



Fabric A Red with Black Dots  
3/8 yard or 11x18 inch piece for flower appliques.  
Maywood Studios MASF18506-R

Fabric M Black with White Dots 3/8 yard  
Kitty 1 and 3, flower center appliques.  
Maywood Studios MASF18506-J

Fabric B Red Houndstooth 1/4 yard  
Sashing and flower center appliques.  
Maywood Studios MASF18503-RJ

Fabric N Red Small Houndstooth 1/4 yard  
Binding Maywood Studios MASF18122-R3

Fabric C Tan Herringbone 1 1/2 yards  
Background pieces.  
Maywood Studios MASF1841-T

Backing fabric of choice 1 1/2 yards.

Fabric D O# White Herringbone  
1/4 yard or 9x21 inch piece for kitty face and fence  
applique.  
Maywood Studios MASF1841-E2

Batting Packaged crib size or 1 1/2 yards of 45 inch  
wide.

Fabric E Grey Herringbone  
1/4 yard or 6x14 inch piece for kitty 3 body and tail  
appliques.  
Maywood Studios MASF1841-K2

Fusible Web 1 1/2 yards. We recommend Soft Fuse.

**Notions and Such:** Matching thread for seams.  
For applique:

We used the following Sulky 12 wt. Cotton Petites:  
(Item numbers are Sulky, color names are not)

MED RED 712-1039  
OLIVE GREEN 712-1173  
DEEP GOLD 712-1826  
LT. GOLD 712-0567  
MED GREY GREEN 712-0630  
DEEP RED 712-1169  
MED ORANGE 712-1833  
BLACK 712-1005  
SOFT GREY 712-1328  
DUSTY PINK 712-1119  
LT OFF WHITE 712-1071

Fabric F Gold with Black Dots  
1/8 yard or 7x12 inch piece for flower appliques.  
Maywood Studios MASF18506-S

Fabric G Gold Houndstooth 3/8 yard  
Border blocks and flower appliques.  
Maywood Studios MASF18503-S

Fabric H Gold Nubby Tweed  
1/3 yard or 12x13 inch piece for kitty 2 applique.  
Maywood Studios MASF507-S

Water soluble quilt marker light and dark, embroidery  
hoop, needle and iron.

Buttons: Two 3/16 inch black, four 1/8 inch black.

Fabric I Green Shadowplay  
1/4 yard or 13x13 inch piece for leaves and stems  
applique.  
Maywood Studios MASF513-G27

**Recommended Tools:** Rotary cutter, mat and ruler.

**MAYWOOD STUDIO**

Fabric for our sample quilt generously supplied by  
Maywood Studios

Pattern designs by Deb Grogan  
Email: Deb@thequiltfactory.com  
www.thequiltfactory.com

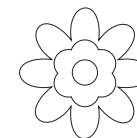
Kitty Cat Garden QF-1721

Fabric J Green Herringbone 1/2 yard  
Grass, border blocks and flower part applique.  
Maywood Studios MASF1841-G

Fabric K Pink Shadowplay  
2x2 inch piece for kitty nose appliques.  
Maywood Studios MASF513-P6

Fabric L Orange Houndstooth  
1/8 yard or 6x8 inch piece for kitty 2 stripes  
applique.  
Maywood Studios MASF18503-O

**WS \$12.50**



©2017 The Quilt Factory/Debra Grogan. All rights reserved. This pattern may not be reproduced or shared. Pattern may be used by one person for personal use or to make finished goods for charities, sale in retail and on-line shops or craft fairs, but may not be mass produced. We have made every attempt to provide you with accurate information, if you have any questions please email us at: Deb@thequiltfactory.com

# Inheritance



## AN APPLIQUE QUILT

82 x 82  
QF-1807



# Inheritance



Necessities for a 82 x 82 inch Quilt

Fabric A Tan leaves and berries 1/2 yard  
Block 1 and floral appliqué  
Moda Heritage 46002-13

Fabric B Muslin solid 2 yards  
Blocks 1, 2, floral appliqué and center block  
Moda Heritage 46008-12

Fabric C Aqua floral spray 1 yard  
Blocks 1, 2, floral appliqué, border posts  
Moda Heritage 46003-11

Fabric D Brown tonal leaf 3/8 yard  
Block 1, floral and center medallion appliqué  
Moda Heritage 46002-26

Fabric E Tan tonal floral sprig 1 1/2 yards  
Block 1 and 2, border 2  
Moda Heritage 46003-23

Fabric F Rose w/tan floral 1/4 yard  
Block 1  
Moda Heritage 46005-17

Fabric G Tan w/mini floral 3/4 yard  
Block 2 and center block  
Moda Heritage 46004-13

Fabric H Red tonal floral sprig 1 1/2 yards  
Block 2, floral and center medallion appliqué,  
Borders 1, 3 and binding  
Moda Heritage 46003-27

Fabric I Brown w/multi floral 1/4 yard  
Block 2  
Moda Heritage 46002-14

Fabric J Dark Brown bird floral 1/4 yard  
Block 2  
Moda Heritage 46000-16

Fabric K Cream with mini floral 1/2 yard  
Center block  
Moda Heritage 46004-12

Fabric L Tan bird floral 1 1/2 yards  
Border 4  
Moda Heritage 46000-13

Fabric M Dark Brown leaves/berries F1/8  
Center medallion appliqué  
Moda Heritage 46002-16

Binding included in Fabric H calculations  
Backing fabric of choice 7 1/2 yards.

Batting 2 & yards 90" wide or packaged  
Queen

**Notions and Such:** Matching thread for  
seams and appliqué, rose, grey blue,  
taupe, dark brown, cream

Freezer paper, spray starch and brush,  
container with lid, fabric appliqué glue,  
water soluble quilt marker, scissors.

Clover mini iron or regular iron, ironing  
board

**Recommended Tools:** Rotary cutter,  
mat and ruler.

Light box or light source.

**WS \$6.00**

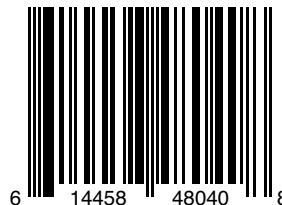
*moda*  
UNITED NOTIONS

Fabric for our sample quilt generously supplied  
by Moda Fabrics.

the QUILT FACTORY

Pattern designs by Deb Grogan  
Email: [Deb@thequiltfactory.com](mailto:Deb@thequiltfactory.com)  
[www.thequiltfactory.com](http://www.thequiltfactory.com)

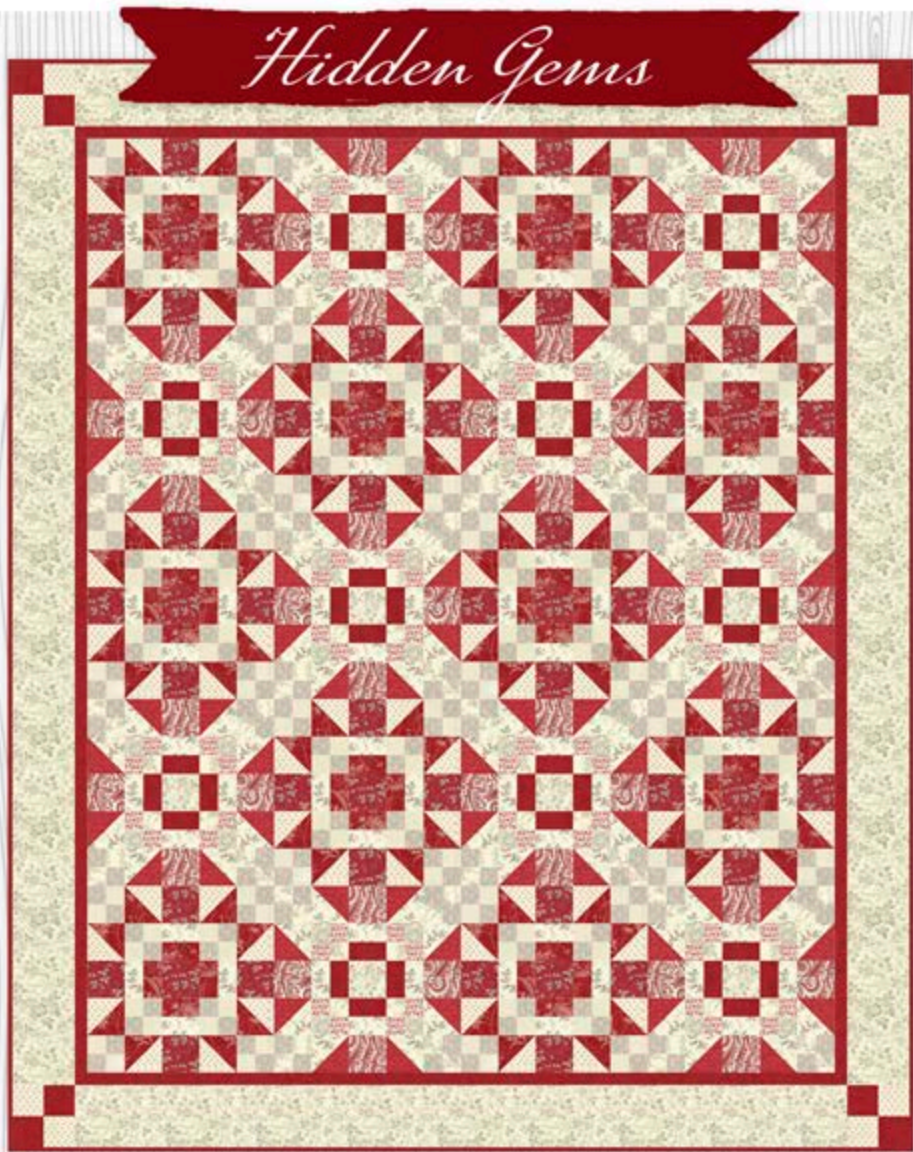
Inheritance QF-1807



6 14458 48040 8

©2018 The Quilt Factory/Debra Grogan. All rights reserved. This pattern may not be reproduced or shared. Pattern may be used by one person for personal use or to make finished goods for charities, sale in retail and on-line shops or craft fairs, but may not be mass produced. We have made every attempt to provide you with accurate information, if you have any questions please email us at: [Deb@thequiltfactory.com](mailto:Deb@thequiltfactory.com)

# Hidden Gems



A 72 x 87 inch Quilt Pattern

#QF-1803



## Hidden Gems

Necessities for a 72 x 87 inch Quilt



Fabric A Tan leaf spray 3/4 yard  
Blocks 1 and 2.  
Moda Hollywoods 44175-12

Fabric B Cream with red dots 5/8 yard  
Blocks 1 and 2, border 2 corner blocks.  
Moda Hollywoods 44176-22

Fabric C Red holly 5/8 yard  
Block 1.  
Moda Hollywoods 44172-17

Fabric D Red large floral 3/4 yard  
Block 1.  
Moda Hollywoods 44170-17

Fabric E Cream holly 1 yard  
Blocks 1 and 2.  
Moda Hollywoods 44172-11

Fabric F Cream medium floral 1 1/2" yard  
Block 2 and border 2.  
Moda Hollywoods 441771-11

Fabric G Red leaf spray 1/2 yard  
Block 2.  
Moda Hollywoods 44175-17

Fabric H Cream with red paisley 1/2 yard  
Block 2.  
Moda Hollywoods 441753-12

Fabric I Cream large floral 1/2 yard  
Block 2.  
Moda Hollywoods 44170-11

Fabric J Cream with red leaf spray 1/4 yard  
Block 2.  
Moda Hollywoods 44175-22

Fabric K Red dot 1 1/2" yards  
Block 2, border 1, corner blocks border 2 and  
binding.  
Moda Hollywoods 44177-17

Fabric L Cream dot 1/2 yard  
Block 1.  
Moda Hollywoods 44177-11

Backing fabric of choice 5 #yards 44 inches or 1  
#yards 90 inch wide.

Batting 2 # yards 90 inch wide or packaged  
Full

**Notions and Such:** Matching thread for seams.

**Recommended Tools:** Rotary cutter, mat and  
ruler.

**WS \$5.00**

*moda*  
UNITED NOTIONS

Fabric for our sample quilt generously supplied  
by Moda Fabrics.

the QUILT FACTORY

Pattern designs by Deb Grogan  
Email: [Deb@thequiltfactory.com](mailto:Deb@thequiltfactory.com)  
[www.thequiltfactory.com](http://www.thequiltfactory.com)

Hidden Gems QF-1803



6 14458 48060 6

©2018 The Quilt Factory/Debra Grogan. All rights reserved. This pattern may not be reproduced or shared. Pattern may be used by one person for personal use or to make finished goods for charities, sale in retail and on-line shops or craft fairs, but may not be mass produced. We have made every attempt to provide you with accurate information, if you have any questions please email us at: [Deb@thequiltfactory.com](mailto:Deb@thequiltfactory.com)



An Applique Quilt Pattern  
91 x 91  
#QF-1705



## Floral Whimsy



Necessities for a 91 x 91 inch Quilt

Fabric A Light Teal 2 1/2 yards  
Borders 3 and 5.  
Center block HST and four patch units.  
Medallion appliqué.  
Riley Blake Fabrics C120 Songbird

Fabric B Yellow tone on tone 3/4 yard  
Border 1 and 4.  
Medallion center and flower buds.  
Riley Blake Fabrics C200-60 Sundrop

Fabric C Pink tone on tone 1/2 yard  
Corners Border 2.  
Nine patch blocks.  
Riley Blake Fabrics C200-81 Bubblegum

Fabric D White tone on tone 1 1/2 yards  
Borders 2 and 7.  
Center appliqué square.  
Riley Blake Fabrics C200-03 Snow

Fabric E Teal tone on tone 2 1/2 yards  
Borders 3, 6, 8 and 9.  
Center Medallion and flower appliqué.  
Binding.  
Riley Blake Fabrics C200-32 Teal

Fabric F Lime Green Small Leaf 5/8 yard  
Border 7.  
Leaves, stems and Center medallion appliqué.  
Riley Blake Fabrics C5746 Green Leafy

Fabric G Light Tangerine Small Leaf 3/8 yard  
Border 7.  
Riley Blake Fabrics C5746 Tangerine Leafy

Fabric H Pink Small Leaf 1/4 yard  
Center medallion and flower appliqué.  
Riley Blake Fabrics C5746 Pink Leafy

Fabric I Large Floral on White 1 1/2 yards  
Border 9.  
Riley Blake Fabrics C5740 Ivory Main

Fabric J Two packages 5 x 5 Pre-cuts OR  
1 yard Scrap Fabric  
HST units for center block, four and nine  
patches.  
Riley Blake Fabrics 5-5740-42 Primavera  
Pre-cuts

Binding \$7 yard included in Fabric E

Backing fabric of choice 7 \$7 yards of 44" or 3 yards 108 inch

Batting 3 yards 108 wide or a 120 x 120 packaged batting

**Notions and Such:** Matching thread for seams and appliqué, pink, lime green, teal, yellow.

Freezer paper, spray starch and brush, container with lid, fabric appliqué glue, water soluble quilt marker, scissors.

Clover mini iron or regular iron, ironing board

**Recommended Tools:** Rotary cutter, mat and ruler.

Light box or light source.

**WS \$8.00**

Fabric for our sample quilt generously supplied by Riley Blake Fabrics. Cover photo shoot at House of Bedrooms, Bloomfield MI

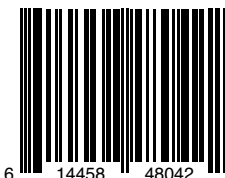
the QUILT FACTORY

Pattern designs by Deb Grogan

Email: [Deb@thequiltfactory.com](mailto:Deb@thequiltfactory.com)

[www.thequiltfactory.com](http://www.thequiltfactory.com)

Floral Whimsy QF-1705



©2017 The Quilt Factory/Debra Grogan. All rights reserved. This pattern may not be reproduced or shared. Pattern may be used by one person for personal use or to make finished goods for charities, sale in retail and on-line shops or craft fairs, but may not be mass produced. We have made every attempt to provide you with accurate information, if you have any questions please email us at: [Deb@thequiltfactory.com](mailto:Deb@thequiltfactory.com)

# Floral Fancy



A 76 x 76 inch Quilt Pattern

#QF-1814



# Floral Fancy

Necessities for a 76 x 76 inch Quilt



Fabric A Cream large floral 1 1/2 yards  
Border 2  
Moda Sunnyside Up 29051-11

Fabric B Aqua large floral 1 yard  
Border 2 Corner blocks, Block 1 and 2, On  
point block  
Moda Sunnyside Up 29051-21

Fabric C Grey large floral 1 yard  
Binding, Block 1, On point block, Border 1  
Moda Sunnyside Up 29051-24

Fabric D Cream small floral 1/2 yard  
Block 2  
Moda Sunnyside Up 29052-11

Fabric E Yellow small floral 1/3 yard  
Block 1  
Moda Sunnyside Up 29052-12

Fabric F Coral small floral 5/8 yard  
Block 2, On point block  
Moda Sunnyside Up 29052-17

Fabric G Grey floral w/grid 3/8 yard  
Block 1  
Moda Sunnyside Up 29053-24

Fabric H Coral tone on tone floral 3/4 yard  
Block 2, On point block  
Moda Sunnyside Up 29054-17

Fabric I Yellow flower bud 1/3 yard  
Block 1  
Moda Sunnyside Up 29055-12

Fabric J Light Aqua geometric 3/8 yard  
Block 2, On point block  
Moda Sunnyside Up 29056-31

Fabric K Lime Green geometric 2/3 yard  
Block 2, On point block  
Moda Sunnyside Up 29056-32

Fabric L Cream mini star-burst 1 1/2 yards  
Block 1 and 2, On point block  
Moda Sunnyside Up 29057-11

Fabric M Coral mini star-burst 3/8 yard  
Block 1  
Moda Sunnyside Up 29057-25

Binding included in Fabric C yardage.

Backing fabric of choice 4 yards 44 inches or  
2 2/3 yards 90 inch wide.

Batting 2 2/3 yards 90 inch wide or packaged  
Full

**Notions and Such:** Matching thread for seams.

**Recommended Tools:** Rotary cutter, mat and  
ruler.

**WS \$5.00**

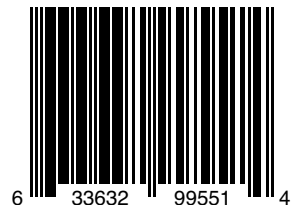
*moda*  
UNITED NOTIONS

Fabric for our sample quilt generously supplied  
by Moda Fabrics.

the QUILT FACTORY

Pattern designs by Deb Grogan  
Email: [Deb@thequiltfactory.com](mailto:Deb@thequiltfactory.com)  
[www.thequiltfactory.com](http://www.thequiltfactory.com)

Floral Fancy QF-1814



6 33632 99551 4

©2018 The Quilt Factory/Debra Grogan. All rights reserved. This pattern may not be reproduced or shared. Pattern may be used by one person for personal use or to make finished goods for charities, sale in retail and on-line shops or craft fairs, but may not be mass produced. We have made every attempt to provide you with accurate information, if you have any questions please email us at: [Deb@thequiltfactory.com](mailto:Deb@thequiltfactory.com)

# Fanciful Garden

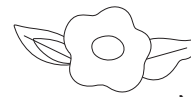


An 18 x 57 inch Table Runner  
and 16 x 20 inch Placemat

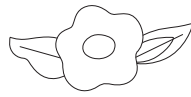
#QF-1819



WS \$6.00



# Fanciful Garden



Necessities for an 18 x 57 inch Runner and 16 x 20 Placemat

Fab	SKU	Description	Part	Runner	PMat 2	PMat 4	PMat 6
A	31570-11	Tan large floral	Border 2	3/8 yard	3/8 yard	5/8 yard	3/4 yard
B	31570-14	Pink lrg floral	Block	1/6 yard	1/6 yard	1/3 yard	1/3 yard
C	31570-15	Red floral	Applique	1/8 yard	1/8 yard	1/8 yard	1/8 yard
D	31571-12	Cream floral	Block	FAT 1/8	-	-	-
E	31571-13	Brown floral	Applique	1/8 yard	1/8 yard	1/8 yard	1/8 yard
F	31573-18	Pink vine	Block (runner) and Applique	3/8 yard	1/8 yard	1/8 yard	1/8 yard
G	31573-24	Brown vine	Applique	1/8 yard	1/8 yard	1/8 yard	1/8 yard
H	31574-12	Cream dots	Block and Applique	3/8 yard	1/8 yard	1/8 yard	1/4 yard
I	31575-16	Pink grid	Border 1 corner posts/ blocks and Applique	3/8 yard	1/8 yard	1/8 yard	1/4 yard
J	31575-20	Red grid	Border 2 cor- ner blocks	1/8 yard	1/8 yard	1/8 yard	1/8 yard
K	31576-15	Red mini floral	Block	1/8 yard	1/8 yard	1/8 yard	1/4 yard
L	31508-67	Cream linen	Applique block	3/8 yard	3/8 yard	3/8 yard	5/8 yard
M	31508-70	Red linen	Binding, Border 1 and Applique	3/4 yard	2/3 yard	3/4 yard	1 1/2 yard
N	31508-71	Brown linen	Applique	1/8 yard	1/8 yard	1/8 yard	1/8 yard

Backing fabric of choice 1 1/2 yards 44 inches for runner, 2 PMats 5/8 yard, 4 PMats 1 1/2 yards, 6 PMats 1 1/2 yards.

Batting or backing for each at 44 inch wide.

**Notions and Such:** Matching thread for seams. Emroidery thread for applique, pink, brown, cream and red. Pink embroidery floss for leaf veins. Light table and quilt marker.

Freezer paper, spray starch and brush, container with lid, fabric appliqué glue, water soluble quilt marker, scissors.

**Recommended Tools:** Rotary cutter, mat and ruler.

Fabric for our sample quilt generously supplied by Moda Fabrics.

Featured fabric Harriet's Handwork

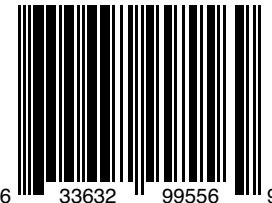
©2018 The Quilt Factory/Debra Grogan. All rights reserved. This pattern may not be reproduced or shared. Pattern may be used by one person for personal use or to make finished goods for charities, sale in retail and on-line shops or craft fairs, but may not be mass produced. We have made every attempt to provide you with accurate information, if you have any questions please email us at: Deb@thequiltfactory.com

moda  
UNITED NOTIONS

the QUILT FACTORY

Pattern designs by Deb Grogan  
Email: Deb@thequiltfactory.com  
www.thequiltfactory.com

Fanciful Garden QF-1819

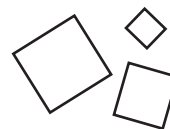


6 33632 99556 9

# Falling Blocks

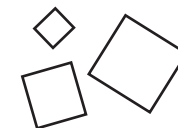


A Quilt Pattern in Three Sizes  
#QFDG150003



## Falling Blocks

Necessities  
Yardage per size



Fabric	48 x 60	76 x 92	84 x 102
1- White	1 1/2	2 2/3	3 1/8
2- Aqua	1/4 (1 FQ)**	3/8 (3/4)*	1/2 (7/8)*
3- Teal	1/4 (1 FQ)**	1/4	1/3
4- Blue	1/4 (1 FQ)**	3/8	1/2
5- Purple	1/4 (1 FQ)**	1/4	1/3
6- Red	1/4 (1 FQ)**	1/4	1/3
7- Pink	1/4 (1 FQ)**	3/8 (3/4)*	1/2 (1)*
8- Orange	1/4 (1 FQ)**	1/4 (5/8)*	1/3 (7/8)*
9- Yell-Orange	1/4 (1 FQ)**	1/6	1/6
10- Yellow	1/4 (1 FQ)**	1/4	1/3
11- Green	1/4 (1 FQ)**	3/8 (3/4)*	1/2 (7/8)*
12- White/Black	1/2 (2 FQ)**	1/2	3/4
13- Black/White	1/2 (2 FQ)**	1/2	3/4
14- Black solid	no border	1/2	1/2

\*Yardage if including this fabric for outer borders.

\*\*Fat Quarters may also be used.

A variety of tone on tone prints works beautifully, This can also be a good scrap buster quilt!

90 inches 90 inches


Size	Binding	Backing	Batting
48 x 60	1/3 Yard	1 3/8	1 3/8
76 x 92	1/2 Yard	2 3/4	2 3/4
84 x 102	5/8 Yard	3	3

You may also purchase packaged batting.

Notions and Such: Matching thread for seams.

Recommended Tools: Rotary cutter, mat and ruler.

**WS \$5.00**

..........  
Boutique Brights (shown) graciously provided by Sue Marsh for RJR.

..........  
..........  
Falling Blocks QFDG-150003

the QUILT FACTORY

Pattern designs by Deb Grogan

Email: Deb@thequiltfactory.com

www.thequiltfactory.com



6 14458 48019 4

©2017 The Quilt Factory/Debra Grogan. All rights reserved. This pattern may not be reproduced or shared. Pattern may be used by one person for personal use or to make finished goods for charities, sale in retail and on-line shops or craft fairs, but may not be mass produced. We have made every attempt to provide you with accurate information, if you have any questions please email us at: Deb@thequiltfactory.com

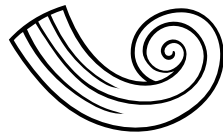
# Entwined



Pre-cut friendly Quilt  
76 x 76  
#QF-1808



# Entwined



Necessities for a 76 x 76 inch Quilt

Fabric A White solid 1 1/2 yards  
Background  
Moda Bella Solid 9900-98

Fabric B Sky Blue watercolor wash 1 yard  
Border 1 and binding  
Moda Twilight 36008-22

Fabric C Sky Blue large floral 1/8 yard  
Corner posts for border 2  
Moda Twilight 36030-12

Fabric D White w/blue graphic line 1 1/2 yards  
Border 2  
Moda Twilight 36036-21

Fabric E Various floral prints 2 1/2 yards OR  
10 x 10 pre-cut  
Moda Twilight 36030LC

Binding included in Fabric B calculations

Backing fabric of choice 4 1/2 yards.

Batting 2 #8 yards 90" wide or packaged  
Queen

**Notions and Such:** Matching thread for  
seams.

**Recommended Tools:** Rotary cutter,  
mat and ruler.

**WS \$5.00**

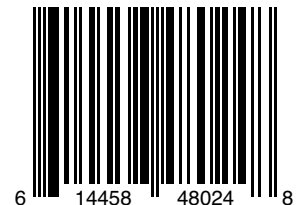
*moda*  
UNITED NOTIONS

Fabric for our sample quilt generously supplied  
by Moda Fabrics.

the QUILT FACTORY

Pattern designs by Deb Grogan  
Email: [Deb@thequiltfactory.com](mailto:Deb@thequiltfactory.com)  
[www.thequiltfactory.com](http://www.thequiltfactory.com)

Entwined QF-1808

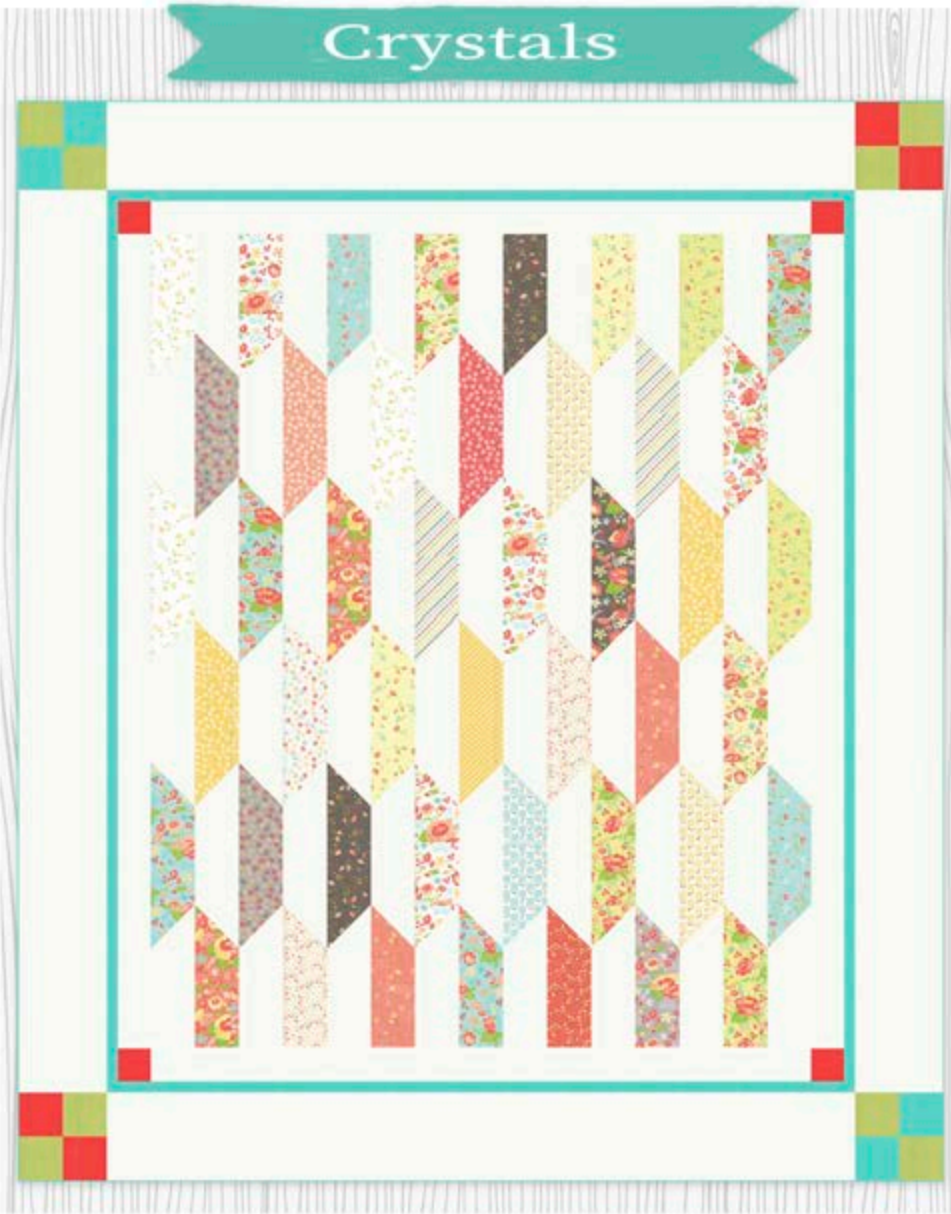


6 14458 48024 8

©2018 The Quilt Factory/Debra Grogan. All rights reserved. This pattern may not be reproduced or shared. Pattern may be used by one person for personal use or to make finished goods for charities, sale in retail and on-line shops or craft fairs, but may not be mass produced. We have made every attempt to provide you with accurate information, if you have any questions please email us at: [Deb@thequiltfactory.com](mailto:Deb@thequiltfactory.com)



# Crystals



A Modern Quilt Pattern 84 x 98  
#QF-1708



## CRYSTALS

Necessities for an 84 x 98 inch Quilt



Fabric A White 5 yards  
Quilt blocks, borders.  
Moda Bella Solid 9900-98 White Bleached

Fabric B Dark Coral 3/4 yard  
Border corner blocks, Border 1 and binding.  
Moda Bella Solid 9900-258 Geranium

Fabric C Teal 5/8 yards  
Border 2, corner blocks.  
Moda Bella Solid 9900-269 Bermuda

Fabric D Yellow Green 1/4 yard  
Corner border blocks.  
Moda Bella Solid 9900-134 Pistachio

Fabric E 2 1/2 yards misc. print fabric  
OR one 10 x 10 inch layer cake  
Moda LuLu Lane Layer Cake 29020LC

Binding included in Fabric B calculations.

Backing fabric of choice 7 1/2 yards of 44" or 3 yards 90 inch

Batting 3 yards 90 inches wide or a queen packaged batting

**Notions and Such:** Matching thread for seams.

**Recommended Tools:** Rotary cutter, mat and ruler.

**WS \$5.00**

the QUILT FACTORY

Pattern designs by Deb Grogan  
Email: [Deb@thequiltfactory.com](mailto:Deb@thequiltfactory.com)  
[www.thequiltfactory.com](http://www.thequiltfactory.com)

Crystals QF-1708

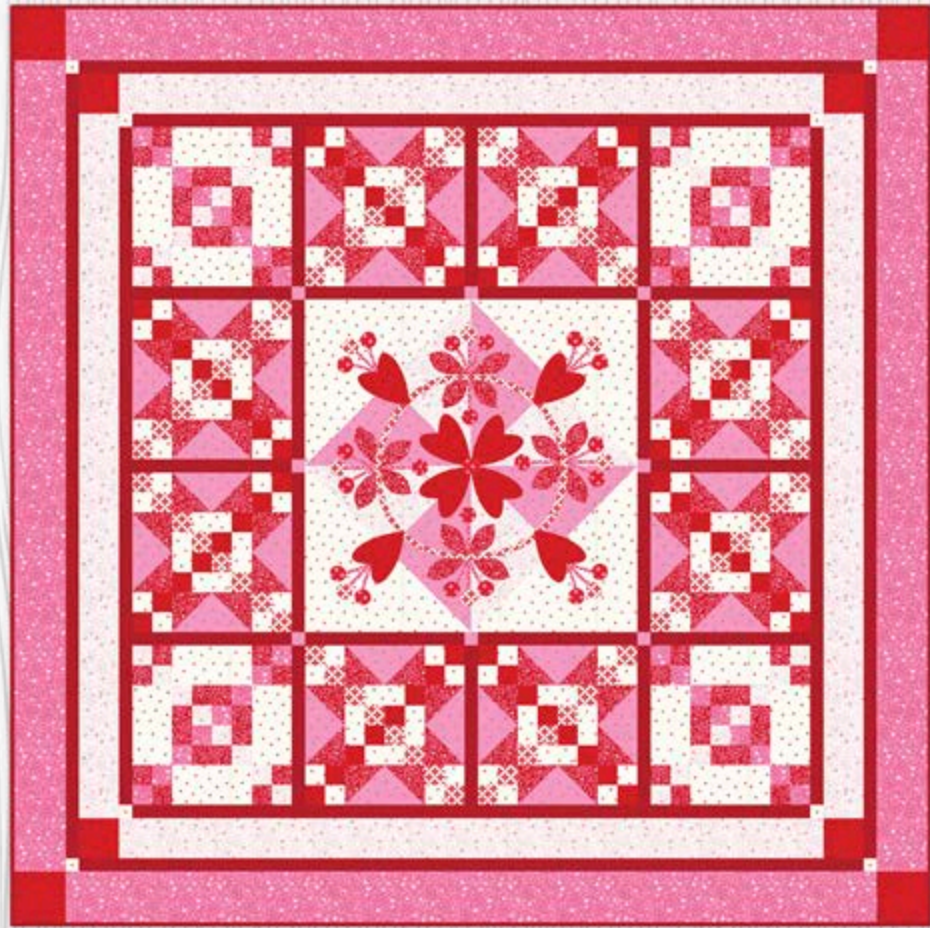
moda  
UNITED NOTIONS

Fabric for our sample quilt generously supplied by  
Moda Fabrics.



©2017 The Quilt Factory/Debra Grogan. All rights reserved. This pattern may not be reproduced or shared. Pattern may be used by one person for personal use or to make finished goods for charities, sale in retail and on-line shops or craft fairs, but may not be mass produced. We have made every attempt to provide you with accurate information, if you have any questions please email us at: [Deb@thequiltfactory.com](mailto:Deb@thequiltfactory.com)

# Cross My Heart



An Appliqué Quilt Pattern  
69 x 69

#QF-1820



# Cross My Heart



Necessities for a 69 x 69 inch Quilt

Fabric A Swirly Hearts Red 3/4 yard  
Block 1 and 2, Applique  
Moda Love Grows 19862-11

Fabric B Swirly Hearts Pink 1 1/2 yards  
Block 1, Border 4  
Moda Love Grows 19862-12

Fabric C Swirly Hearts White 1 1/2 yards  
Border 2, Center Block, Block 1  
Moda Love Grows 19862-14

Fabric D Tossed Hearts Red 5/8 yard  
Block 2, Applique, Border Corners  
Moda Love Grows 19863-11

Fabric E Tossed Hearts Pink 1 yards  
Block 2, Center Block, Sashing post  
Moda Love Grows 19863-13

Fabric F Tossed Hearts White 1 1/2 yards  
Block 1 and 2, Center Block, Corner Blocks  
Moda Love Grows 19863-15

Fabric G Circles White 5/8 yard  
Block 2, Applique, Border Corners  
Moda Love Grows 19864-11

Fabric H Circles Red 1/8 yard  
Applique  
Moda Love Grows 19864-12

Fabric I Circles Pink 1/3 yard  
Applique  
Moda Love Grows 19864-13

Fabric J Solid Red 1 1/2 yards  
Sashing, Border 1 and 3, Binding  
Moda Bella Solid 9900-16

Binding included in Fabric J yardage.

Backing fabric of choice 4 1/2 yards 44 inches  
or 2 1/2 yards 90 inch wide.

Batting 2 1/2 yards 90 inch wide or pack-  
aged Twin/Full

**Notions and Such:** Matching thread for  
seams and appliqué, red, white, light and  
dark pink.

Freezer paper, spray starch and brush, con-  
tainer with lid, fabric appliqué glue, water  
soluble quilt marker, scissors.

Clover mini iron or regular iron, ironing  
board

**Recommended Tools:** Rotary cutter, mat  
and ruler.

Light box or light source.

**WS \$6.00**

the QUILT FACTORY

Pattern designs by Deb Grogan  
Email: [Deb@thequiltfactory.com](mailto:Deb@thequiltfactory.com)  
[www.thequiltfactory.com](http://www.thequiltfactory.com)

Cross My Heart QF-1820

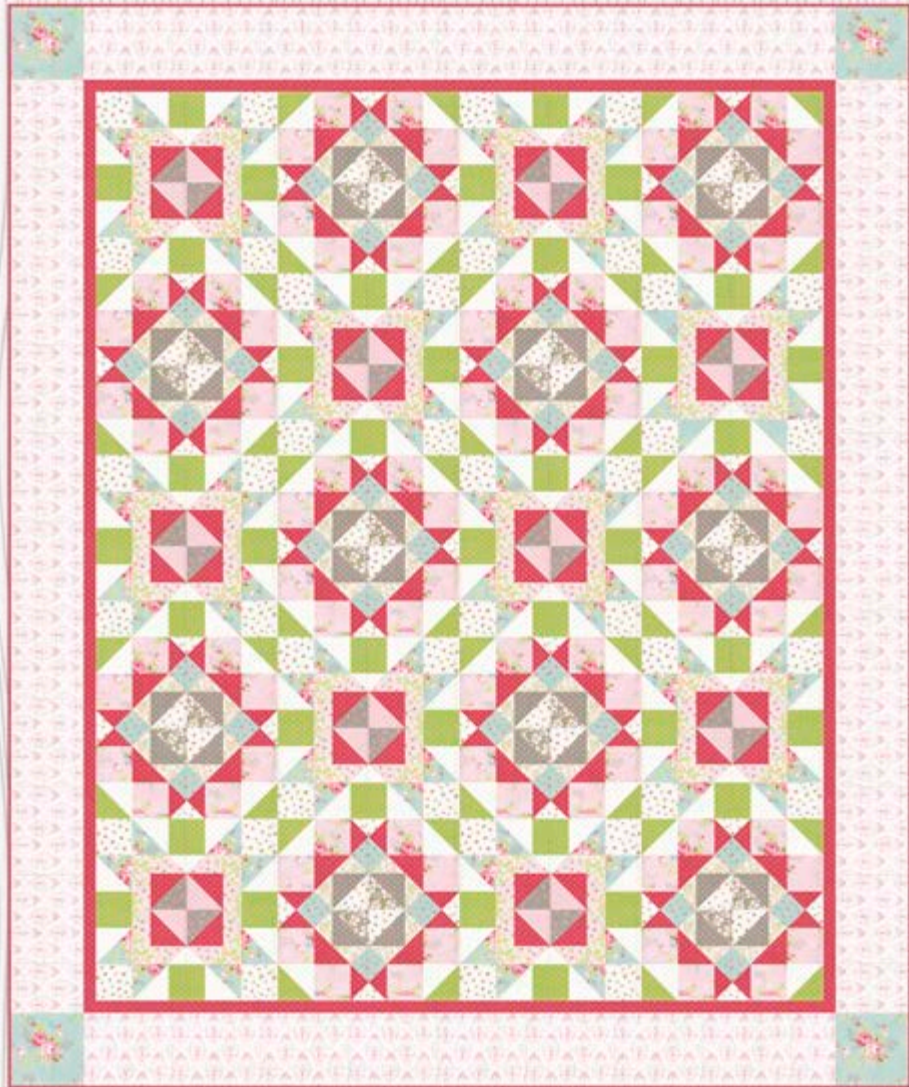
moda  
UNITED NOTIONS

Fabric for our sample quilt generously sup-  
plied by Moda Fabrics.



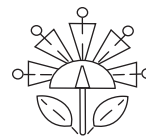
©2018 The Quilt Factory/Debra Grogan. All rights reserved. This pattern may not be reproduced or shared. Pattern may be used by one person for personal use or to make finished goods for charities, sale in retail and on-line shops or craft fairs, but may not be mass produced. We have made every attempt to provide you with accurate information, if you have any questions please email us at: [Deb@thequiltfactory.com](mailto:Deb@thequiltfactory.com)

# Cottage Splendor



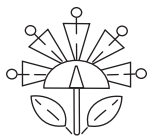
A 74 x 89 inch Quilt Pattern

#QF-1818



# Cottage Splendor

Necessities for a 74 x 89 inch Quilt



Fabric A Aqua large floral 3/4 yard  
Block 1, Border 2 corners  
Moda Amberly 18670-12

Fabric B Pink large floral 3/4 yard  
Block 2  
Moda Amberly 18670-14

Fabric C Cream petite floral 3/4 yard  
Block 1 and 2  
Moda Amberly 18671-12

Fabric D Aqua petite floral 1/4 yard  
Block 2  
Moda Amberly 18671-13

Fabric E Pink petite floral 3/8 yard  
Block 1  
Moda Amberly 18671-15

Fabric F Grey petite floral 1/4 yard  
Block 1  
Moda Amberly 18671-16

Fabric G Pink toile 1 1/2" yards  
Border 2  
Moda Amberly 18672-14

Fabric H White w/pink floral 3/8 yard  
Block 2  
Moda Amberly 18673-11

Fabric I Yellow w/pink floral 5/8 yard  
Block 1 and 2  
Moda Amberly 18673-13

Fabric J Grey w/pink floral 1/4 yard  
Block 2  
Moda Amberly 18673-15

Fabric K White dot 7/8 yard  
Block 1  
Moda Amberly 18675-12

Fabric L Green dot 5/8 yard  
Block 1 and 2  
Moda Amberly 18675-14

Fabric M Pink dot 1/4 yard  
Block 1  
Moda Amberly 18675-17

Fabric N Red dot 2 yards  
Block 1 and 2, Border 1, Binding  
Moda Amberly 18675-18

Fabric O Grey dot 3/8 yard  
Block 2  
Moda Amberly 18675-19

Binding included in Fabric N yardage.

Backing fabric of choice 5 1/2 yards 44 inches or 2 1/2 yards 90 inch wide.

Batting 2 1/2 yards 90 inch wide or packaged Full

**Notions and Such:** Matching thread for seams.

**Recommended Tools:** Rotary cutter, mat and ruler.

**WS \$5.00**

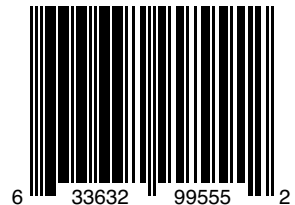
*moda*  
UNITED NOTIONS

Fabric for our sample quilt generously supplied by Moda Fabrics.

the QUILT FACTORY

Pattern designs by Deb Grogan  
Email: [Deb@thequiltfactory.com](mailto:Deb@thequiltfactory.com)  
[www.thequiltfactory.com](http://www.thequiltfactory.com)

Cottage Splendor QF-1818



©2018 The Quilt Factory/Debra Grogan. All rights reserved. This pattern may not be reproduced or shared. Pattern may be used by one person for personal use or to make finished goods for charities, sale in retail and on-line shops or craft fairs, but may not be mass produced. We have made every attempt to provide you with accurate information, if you have any questions please email us at: [Deb@thequiltfactory.com](mailto:Deb@thequiltfactory.com)



# Broken Stars

A 58 x 74 inch Throw  
#QF-1709



# Broken Stars



Necessities for a 58 x 74 inch Quilt

Fabric A O! White 3  $\frac{1}{2}$  yards  
Quilt blocks, borders.  
Moda Bella Solid 9900-200 O! White

Fabric B Lt. Grey Green 1  $\frac{1}{2}$  yards  
Quilt blocks, binding, borders 1, 3 and 5.  
Moda Bella Solid 9900-177 Home Town Sky

Fabric C Medium Rose  $\frac{5}{8}$  yard  
Borders 2 and 4.  
Moda Bella Solid 9900-112 Blush

Fabric D Misc. Prints  $\frac{3}{4}$  yards  
Various prints for a scrappy look at least  
5 inches wide.  
OR one package of 5 x 5 pre-cuts  
Moda Poetry Charm Pack 14130PP

Binding included in Fabric B calculations

Backing 3  $\frac{1}{2}$  yards of 44 inches or  
1  $\frac{1}{2}$  at 90 inches

Batting 1  $\frac{1}{2}$  yards 90 inch wide or  
packed twin batting

Notions and Such:

Matching thread for seams.

Recommended Tools: Rotary cutter, mat  
and ruler.

**WS \$5.00**

the QUILT FACTORY

Pattern designs by Deb Grogan  
Email: [Deb@thequiltfactory.com](mailto:Deb@thequiltfactory.com)  
[www.thequiltfactory.com](http://www.thequiltfactory.com)

Broken Stars QF-1709



©2017 The Quilt Factory/Debra Grogan. All rights reserved. This pattern may not be reproduced or shared. Pattern may be used by one person for personal use or to make finished goods for charities, sale in retail and on-line shops or craft fairs, but may not be mass produced. We have made every attempt to provide you with accurate information, if you have any questions please email us at: [Deb@thequiltfactory.com](mailto:Deb@thequiltfactory.com)

# Bird Song



An Applique Quilt 53 x 68

#QF-1722



# Bird Song



Necessities for a 53 x 68 inch Quilt

Fabric A White dotted 2 yards  
Top and bottom vine Borders  
Center medallion, heart, bird appliqué blocks  
Star blocks  
Camelot Fabrics 2141-0001

Fabric B Crosshatch Turquoise Floral 1/3 yard  
Star block  
Appliqués for Center Medallion and birds  
Camelot Fabrics 71170102-1

Fabric C Turquoise Mini Floral 7/8 yard  
Heart, star appliqué blocks  
Appliqués for Center Medallion, bird wings  
Binding  
Camelot Fabrics 71170105-2

Fabric D Coral Dotted 1 1/4 yards  
Center medallion, on point flower appliqué and star blocks  
Camelot Fabrics 2141-0084

Fabric E Coral Bird Floral 1 yard  
Heart appliqué blocks and Borders  
Camelot Fabrics 71170106-3

Fabric F Lime Green Solid 1 1/4 yards  
Heart blocks and leaf and stem appliqués  
Camelot Fabrics 2141-0094

Fabric G Coral Solid 10 x 10 piece  
Bird beaks and flower appliqué accents  
Camelot Fabrics 2141-0030

Fabric H Crosshatch Cream Floral 10 x 10 piece  
Bird and flower appliqués  
Camelot Fabrics 71170101-1

Fabric I Turquoise Large Floral 10 x 10 piece  
Flower and flower pot appliqués  
Camelot Fabrics 71170101-2

Fabric J Red Large Floral 1/4 yard  
Flower, heart and bird appliqués  
Camelot Fabrics 71170101-3

Fabric K Crosshatch Cream Floral 10 x 10 piece  
Flower, heart and bird appliqués  
Camelot Fabrics 71170102-2

Fabric L Crosshatch Pink Floral 1/4 yard  
Flower and bird appliqués  
Camelot Fabrics 71170102-3

Fabric M Turquoise Tonal Floral 10 x 10 piece  
Bow appliqué  
Camelot Fabrics 71170103-2

Fabric N Turquoise Bu! also Check 10 x 10 piece  
Heart and flower pot appliqués  
Camelot Fabrics 71170104-1

Fabric O Coral Bu! also Check 10 x 10 piece  
Flower pot appliqué  
Camelot Fabrics 71170104-2

Fabric P Cream Mini Floral 10 x 10 piece  
Center Medallion flower appliqués  
Camelot Fabrics 71170105-1

Fabric Q Red Mini Floral 1/4 yard  
Bird and flower appliqués  
Camelot Fabrics 71170105-3

Fabric R Turquoise Bird Floral 10 x 10 piece  
Flower appliqués  
Camelot Fabrics 71170106-1

**Binding fabric** included in Fabric C calculations

**Batting** 2 yards 90 inches wide or Twin packaged

**Backing fabric** of choice 3 1/2 yards of 44 inch wide

**Notions and Such:** Matching thread for seams and appliqué, coral, pink, turquoise, red, off white and green.  
Black floss for eyes or 1/8 inch tiny buttons, embroidery needle

Freezer paper, spray starch and brush, container with lid, fabric appliqué glue, water soluble quilt marker, scissors.

Clover mini iron or regular iron, ironing board

**Recommended Tools:** Rotary cutter, mat and ruler.

Light box or light source.

Fabric for our sample generously supplied by Camelot Fabrics

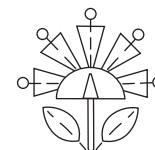


## the QUILT FACTORY

Pattern designs by Deb Grogan  
Email: [Deb@thequiltfactory.com](mailto:Deb@thequiltfactory.com)  
[www.thequiltfactory.com](http://www.thequiltfactory.com)

Bird Song QF-1722

**WS \$9.00**



©2017 The Quilt Factory/Debra Grogan. All rights reserved. This pattern may not be reproduced or shared. Pattern may be used by one person for personal use or to make finished goods for charities, sale in retail and on-line shops or craft fairs, but may not be mass produced. We have made every attempt to provide you with accurate information, if you have any questions please email us at: [Deb@thequiltfactory.com](mailto:Deb@thequiltfactory.com)

# YANKEE DOODLE



A 78 x 78 inch Quilt Pattern  
#QF-1826



# YANKEE DOODLE

A 78 x 78 inch Quilt



Fabric A Ivory star in star 1 1/2" yards  
Border 2  
Moda Stars & Stripes Gathering 1260-11

Fabric B Navy triple star 1 yard  
Sashing, Border 1  
Moda Stars & Stripes Gathering 1261-16

Fabric C Navy star 1 1/2" yards  
Blocks, Border 2 corners  
Moda Stars & Stripes Gathering 1262-16

Fabric D Red large star 7/8 yard  
Block  
Moda Stars & Stripes Gathering 1263-15

Fabric E Red swirl star 1 yard  
Star Block and Binding  
Moda Stars & Stripes Gathering 1264-15

Fabric F Ivory with blue star 2 1/2" yards  
Blocks  
Moda Stars & Stripes Gathering 1266-12

Fabric G Tan with red star 1/8 yard  
Sashing Posts  
Moda Stars & Stripes Gathering 1266-13

Backing fabric of choice 4 3/4 yards 44 inches or 2 1/2 yards 90 inch wide.

Batting 2 1/2 yards 90 inch wide or packaged Full

**Notions and Such:** Matching thread for seams.

**Recommended Tools:** Rotary cutter, mat and ruler.

**WS \$5.00**

the QUILT FACTORY

Pattern designs by Deb Grogan  
Email: [Deb@thequiltfactory.com](mailto:Deb@thequiltfactory.com)  
[www.thequiltfactory.com](http://www.thequiltfactory.com)

Yankee Doodle QF-1826

moda  
UNITED NOTIONS

Fabric for our sample quilt generously supplied  
by Moda Fabrics.



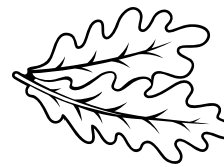
©2018 The Quilt Factory/Debra Grogan. All rights reserved. This pattern may not be reproduced or shared. Pattern may be used by one person for personal use or to make finished goods for charities, sale in retail and on-line shops or craft fairs, but may not be mass produced. We have made every attempt to provide you with accurate information, if you have any questions please email us at: [Deb@thequiltfactory.com](mailto:Deb@thequiltfactory.com)

# Autumn Star

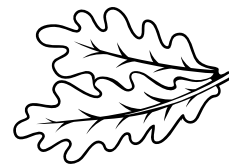


A 67 x 67 inch Quilt Pattern

#QF-1806



# Autumn Star



Necessities for a 67 x 67 inch Quilt

Fabric A Olive Green dot 5/8 yard  
Block and corner blocks Border 2  
Moda Spice it Up 38056-13

Fabric B Tan mini floral 2 1/2 yards  
Block, border 2 and sashing posts  
Moda Spice it Up 38057-21

Fabric C Olive Green floral 5/8 yard  
Block  
Moda Spice it Up 38052-23

Fabric D Olive Green mini floral 5/8 yard  
Block  
Moda Spice it Up 38057-13

Fabric E Olive Green buds and vine 5/8 yard  
Block  
Moda Spice it Up 38050-13

Fabric F Rust floral vine 1 1/8 yards  
Block and corner blocks for border 2  
Moda Spice it Up 38055-16

Fabric G Red Rust leaves 5/8 yard  
Block  
Moda Spice it Up 38053-16

Fabric H Brown floral vine 1 3/8 yards  
Border 1, sashing and binding  
Moda Spice it Up 38055-18

Binding included in Fabric H calculations.

Backing fabric of choice 4 1/8 yards.

Batting 2 1/8 yards 90" wide or packaged  
Double/Full

**Notions and Such:** Matching thread for seams.

**Recommended Tools:** Rotary cutter, mat and ruler.

**WS \$5.00**

*moda*  
UNITED NOTIONS

Fabric for our sample quilt generously supplied by Moda Fabrics.

the QUILT FACTORY

Pattern designs by Deb Grogan  
Email: [Deb@thequiltfactory.com](mailto:Deb@thequiltfactory.com)  
[www.thequiltfactory.com](http://www.thequiltfactory.com)

Autumn Star QF-1806



©2018 The Quilt Factory/Debra Grogan. All rights reserved. This pattern may not be reproduced or shared. Pattern may be used by one person for personal use or to make finished goods for charities, sale in retail and on-line shops or craft fairs, but may not be mass produced. We have made every attempt to provide you with accurate information, if you have any questions please email us at: [Deb@thequiltfactory.com](mailto:Deb@thequiltfactory.com)

Just a little FYI about ordering from us

- All first orders are credit card . You may fill out a credit sheet for Net30 terms, which is available on my web-site under the Wholesale tab. Invoices for credit card payments are sent via Square for safely paying on-line. We do not have access to or store your credit card information.
- We do not have a minimum per-say but request patterns be ordered 4 per style.
- We do not offer free shipping but will add a free pattern or 2 to offset cost on orders of \$150 or more. We usually ship via the USPS as it is most cost effective. We charge actual shipping only.
- Wholesale prices are varied and listed on each pattern. We charge full retail across all our platforms.
- We do all our own printing in house so depending on what is going on in the studio, most orders can go out within a few days.
- The best way to place an order is to email me direct at [deb@thequiltfactory.com](mailto:deb@thequiltfactory.com)

Thank you! We look forward to working with you.....Deb

ALL IMAGES AND DESIGNS IN THIS PDF ARE COPYRIGHT DEB GROGAN/THE QUILT FACTORY