

Summer Wind

A Fab 5 Quilt Pattern
53 x 64 inches

#QF-2210



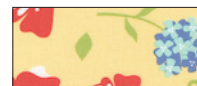
Summer Wind

An 53 x 64 inch Quilt Pattern

Fabric A 1 yard
Border 2
Moda Sunwashed 29160-11



Fabric B 1 yard
Block
Moda Sunwashed 29160-16



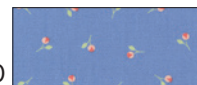
Fabric C 1 yard
Block, sashing posts
Moda Sunwashed 29162-19



Fabric D 1 yard
Block
Moda Sunwashed 29164-11



Fabric E 1 yard
Sashing, border 1
Moda Sunwashed 29164-20



Fabric F 1/2 yard
Binding
Moda Sunwashed 29166-40



Backing fabric of choice 4 yards 44 inch
or 2 yards 108 inch wide.
Batting 2 yards 108 inch wide

Notions and Such:
Matching thread for seams.

Recommended Tools: Rotary cutter,
mat and ruler.



the **QUILT FACTORY**
Pattern designs by Deb Grogan
Email: Deb@thequiltfactory.com
www.thequiltfactory.com

Fab 5 Summer Wind QF-2210

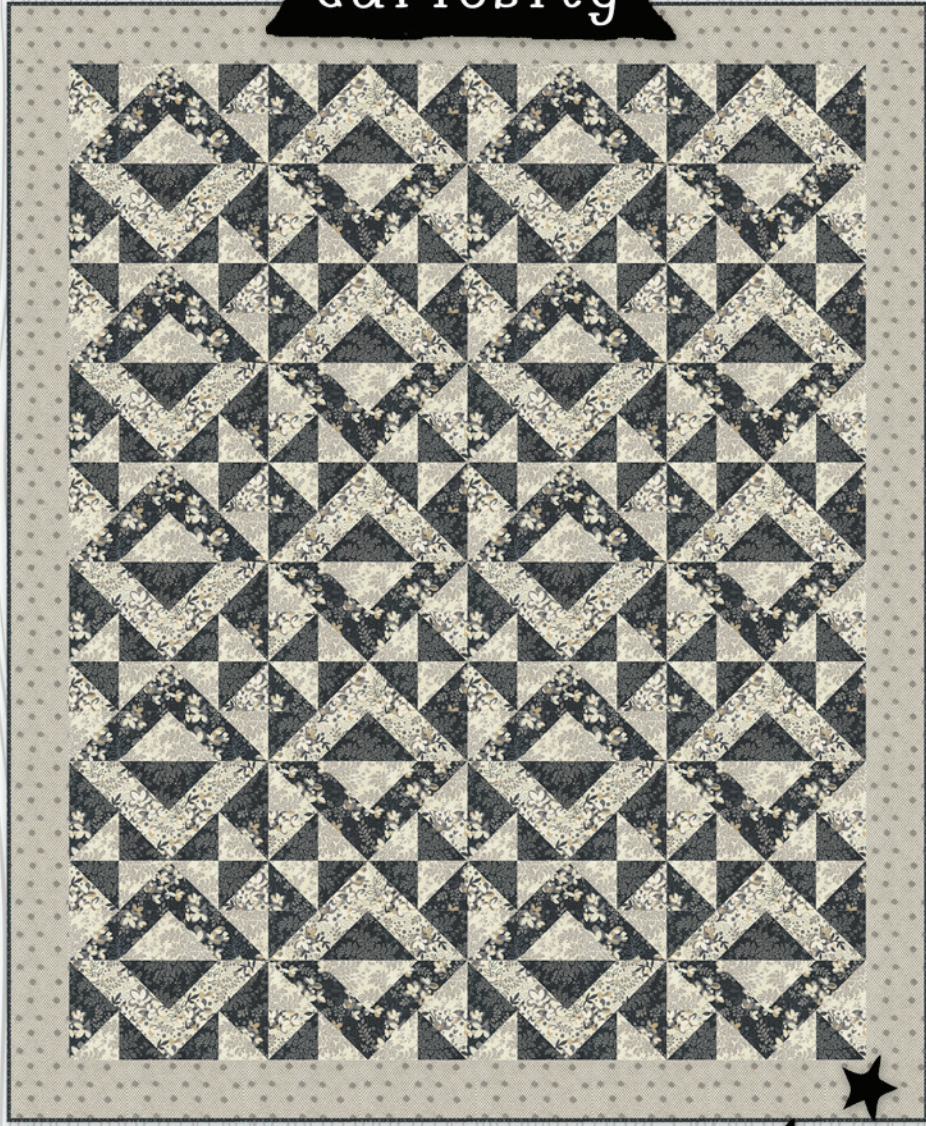
Fabric for our sample quilt
generously supplied by Moda

moda
UNITED NOTIONS



©2022 The Quilt Factory/Debra Grogan. All rights reserved. This pattern may not be reproduced or shared. Pattern may be used by one person for personal use or to make finished goods for charities, sale in retail and on-line shops or craft fairs, but may not be mass produced. We have made every attempt to provide you with accurate information, if you have any questions please email us at: Deb@thequiltfactory.com

curiosity



A Fab 5 Quilt Pattern
55 x 67 inches
#QF-2211



curiosity

An 55 x 67 inch Quilt Pattern

Fabric A 1 yard
Block
Moda Date Night 30711-11



Fabric B 1 yard
Block
Moda Date Night 30711-14



Fabric C 1 yard
Block
Moda Date Night 30713-13



Fabric D 1 yard
Block
Moda Date Night 30713-23



Fabric E 1 yard
Border 1
Moda Date Night 30717-12



Fabric F 1/2 yard
Binding
Moda Date Night 30718-17



Backing fabric of choice 4 1/8 yards
44 inch
or 2 1/8 yards 108 inch wide.
Batting 2 1/8 yards 108 inch wide

Notions and Such:
Matching thread for seams.

Recommended Tools: Rotary cutter,
mat and ruler.



the **QUILT FACTORY**
Pattern designs by Deb Grogan
Email: Deb@thequiltfactory.com
www.thequiltfactory.com

Fab 5 Curiosity QF-2211

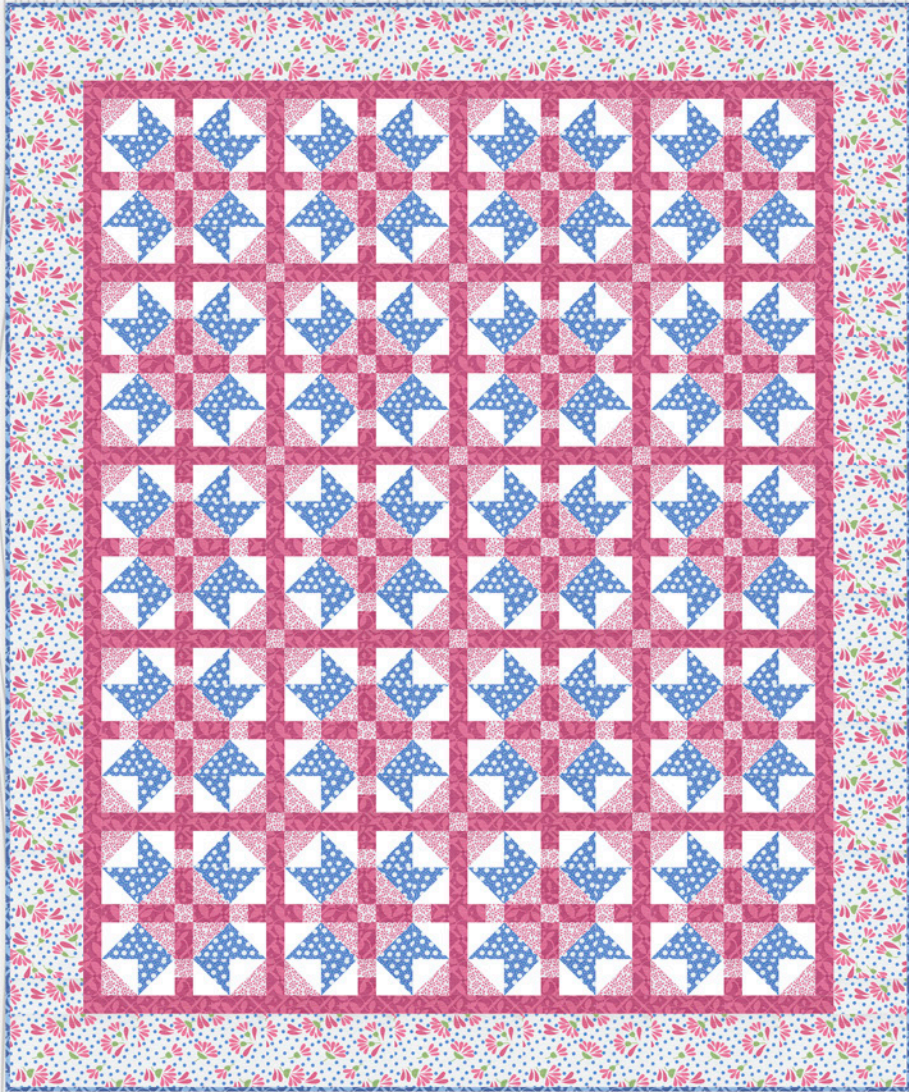
Fabric for our sample quilt
generously supplied by Moda



7 52349 96300 2

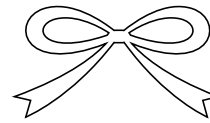
©2022 The Quilt Factory/Debra Grogan. All rights reserved. This pattern may not be reproduced or shared. Pattern may be used by one person for personal use or to make finished goods for charities, sale in retail and on-line shops or craft fairs, but may not be mass produced. We have made every attempt to provide you with accurate information, if you have any questions please email us at: Deb@thequiltfactory.com

RIBBON WEAVE



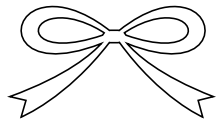
A Fab 5 Quilt Pattern
49 X 59 inches

QF-2201



RIBBON WEAVE

A Fab 5 Pattern 49 x 59 inch Quilt



Fabric A Pink flowers on white 1 yard
Border 2
Moda Picnic Pop 22431-11

Fabric B Dark pink flourish 1 yard
Block, sashing, border 1
Moda Picnic Pop 22435-15

Fabric C Lrg white dots/med blue 1 yard
Block
Moda Picnic Pop 22437-23

Fabric D White on white tonal floral 1 yard
Block
Moda Picnic Pop 22438-21

Fabric E Dark pink floral on white 1 yard
Block, sashing posts
Moda Picnic Pop 22438-25

Binding 1/2 yard
Moda Picnic Pop 22435-13

Backing fabric of choice 3 5/8 yards 44 inches or 1 5/8 yards 90 inch wide.

Batting 1 5/8 yards 90 inch wide or packaged Twin

Notions and Such: Matching thread for seams.

Recommended Tools: Rotary cutter, mat and ruler.

the QUILT FACTORY

Pattern designs by Deb Grogan
Email: Deb@thequiltfactory.com
www.thequiltfactory.com

Fab 5 Ribbon Weave QF-2201



moda
UNITED NOTIONS

Fabric for our sample quilt generously supplied by Moda Fabrics.

©2022 The Quilt Factory/Debra Grogan. All rights reserved. This pattern may not be reproduced or shared. Pattern may be used by one person for personal use or to make finished goods for charities, sale in retail and on-line shops or craft fairs, but may not be mass produced. We have made every attempt to provide you with accurate information, if you have any questions please email us at: Deb@thequiltfactory.com



Alternate Dark Colorway!

A Simple SIX Quilt Pattern
60 x 73 inches

QF-2202



WHICH WAY?



A Simple SIX Pattern 60 x 73 inch Quilt

Fabric A Lrg. floral on yellow OR drk grey 1 yard
Block
Moda Buttercup and Slate 29151-13
OR 29151-17 Dark colorway

Fabric B White tonal floral 1 yard
Block
Moda Buttercup and Slate 29152-11

Fabric C Lrg. floral on white OR drk grey 1 yard
Border 2
Moda Buttercup and Slate 29152-21
OR 29152-27 Dark colorway

Fabric D Line floral on white 1 yard
Block, sashing posts
Moda Buttercup and Slate 29152-31

Fabric E Sm floral on grey 1 yard
Border 1, sashing
Moda Buttercup and Slate 29153-16

Fabric F Sm. folral on yellow OR drk grey 1 yard
Block
Moda Buttercup and Slate 29154-12
OR 29154-17 Darkk colorway

Binding 1/2 yard
Tiny Ohio stars on tonal greys/white
Moda Buttercup and Slate 29155-16

Backing fabric of choice 4 ½ yards
44 inches or 2 ¼ yards 90 inch wide.

Batting 2 ¼ yards 90 inch wide or
packaged Twin

Notions and Such: Matching thread
for seams.

Recommended Tools: Rotary cut-
ter, mat and ruler.

the QUILT FACTORY

Pattern designs by Deb Grogan
Email: Deb@thequiltfactory.com
www.thequiltfactory.com

Simple 6 Which Way? QF-2202



7 52349 96291 3



Fabric for our sample quilt generously supplied
by Moda Fabrics.

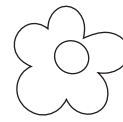
©2022 The Quilt Factory/Debra Grogan. All rights reserved. This pattern may not be reproduced or shared. Pattern may be used by one person for personal use or to make finished goods for charities, sale in retail and on-line shops or craft fairs, but may not be mass produced. We have made every attempt to provide you with accurate information, if you have any questions please email us at: Deb@thequiltfactory.com

Sticks and Stones



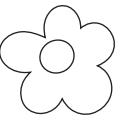
A Simple SIX Quilt Pattern
60 x 73 inches

QF-2203



Sticks and Stones

A Simple SIX Pattern 60 x 73 inch Quilt



Fabric A Lrg. floral on cream 1 yard
Border 2
Moda Wild Meadow 43130-11

Fabric B Lrg. floral on green 1 yard
Block
Moda Wild Meadow 43130-12

Fabric C Sm. floral spray on lilac 1 yard
Border 1, sashing
Moda Wild Meadow 43133-16

Fabric D Sm. floral on very drk purple 1 yard
Block
Moda Wild Meadow 43133-17

Fabric E Cream floral tonal 1 yard
Block
Moda Wild Meadow 43134-21

Fabric F Small geo on cream 1 yard
Block, sashing posts
Moda Wild Meadow 43136-11

Binding 1/2 yard
Lilac vine on very drk purple
Moda Wild Meadow 43137-17

Backing fabric of choice 4 ½ yards
44 inches or 2 ¼ yards 90 inch wide.

Batting 2 ¼ yards 90 inch wide or
packaged Twin

Notions and Such: Matching thread
for seams.

Recommended Tools: Rotary cut-
ter, mat and ruler.

the QUILT FACTORY

Pattern designs by Deb Grogan
Email: Deb@thequiltfactory.com
www.thequiltfactory.com

Simple 6 Sticks and Stones QF-2203

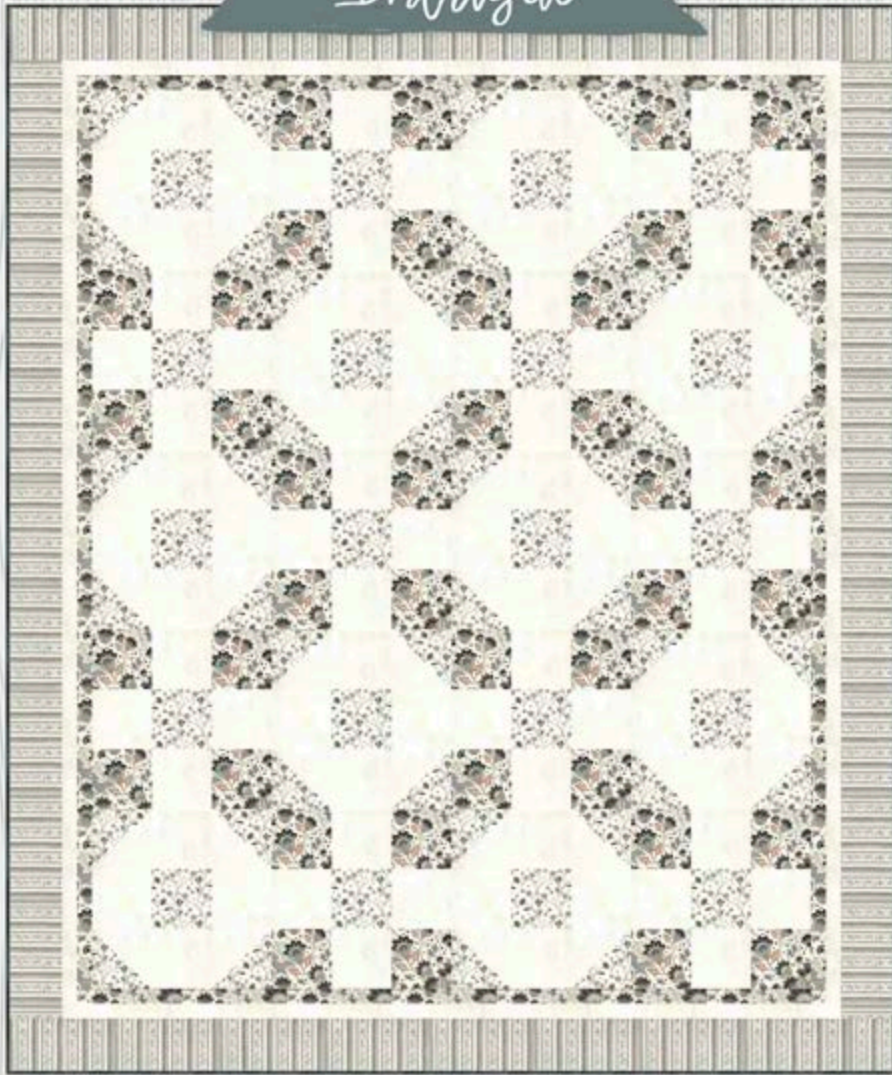


moda
UNITED NOTIONS

Fabric for our sample quilt generously supplied
by Moda Fabrics.

©2022 The Quilt Factory/Debra Grogan. All rights reserved. This pattern may not be reproduced or shared. Pattern may be used by one person for personal use or to make finished goods for charities, sale in retail and on-line shops or craft fairs, but may not be mass produced. We have made every attempt to provide you with accurate information, if you have any questions please email us at: Deb@thequiltfactory.com

Intrigue



A Fab 5 Quilt Pattern
60 x 72 inches
#QF-2020



Intrigue



A Fab 5 Pattern 60 x 72 inch Quilt

Fabric A Large floral on cream 1 yard
Border 1, blocks
Moda Boudior 30650-15

Fabric B Floral vine on cream 1 yard
Blocks
Moda Boudior 30651-15

Fabric C Floral vine and stripe on cream 1 yard
Border 3
Moda Boudior 30654-15

Fabric D Cream grunge 2 yards
Blocks, border 2
Moda Boudior 30150-426

Binding Dark grey grunge 1/2 yard
Moda Boudior 30150-551

Backing fabric of choice 3 2/3 yards 44 inches or 2 yards 90 inch wide.

Batting 2 yards 90 inch wide or packaged Twin

Notions and Such: Matching thread for seams.

Recommended Tools: Rotary cutter, mat and ruler.

4 Fabrics, 5 yards, 1 AMAZING quilt!

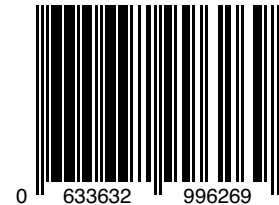
the QUILT FACTORY

Pattern designs by Deb Grogan
Email: Deb@thequiltfactory.com
www.thequiltfactory.com

Intrigue QF-2020

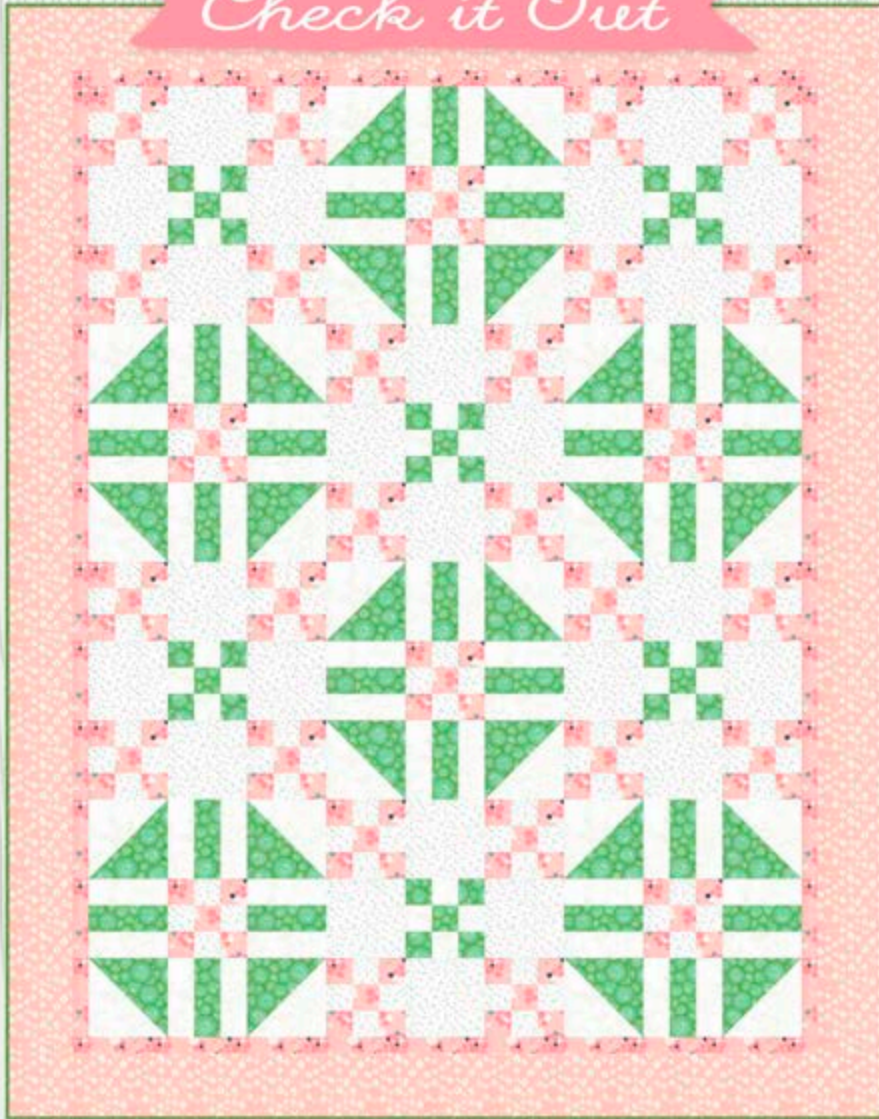
moda
UNITED NOTIONS

Fabric for our sample quilt generously supplied by Moda Fabrics.



©2020 The Quilt Factory/Debra Grogan. All rights reserved. This pattern may not be reproduced or shared. Pattern may be used by one person for personal use or to make finished goods for charities, sale in retail and on-line shops or craft fairs, but may not be mass produced. We have made every attempt to provide you with accurate information, if you have any questions please email us at: Deb@thequiltfactory.com

Check it Out



A Fab 5 Pattern
52 x 66 1/2
#QF-2019



Check it Out



A Fab 5 Pattern 52 x 66 1/2 inch Quilt

Fabric A Geometric on pink 1 yard
Border 1, block
Moda Dance in Paris 1741-12M

Fabric B Diamond geo on pink 1 yard
Border 2
Moda Dance in Paris 1742-12M

Fabric C Circle geo on green 1 yard
Block
Moda Dance in Paris 1743-14M

Fabric D Muti Silver X's on white 1 yard
Block
Moda Dance in Paris 1745-11M

Fabric E Blue and gold X's on green 1/2 yard
Binding
Moda Dance in Paris 1745-15M

Fabric F Gold spots on white 1 yard
Block
Moda Spotted 1660-140M

Backing fabric of choice 3 1/4 yards 44 inches or 1 5/8 yards 90 inch wide.

Batting 1 5/8 yards 90 inch wide or packaged Twin

Notions and Such: Matching thread for seams.

Recommended Tools: Rotary cutter, mat and ruler.

Uses just 5 yards of Fabric plus the binding!

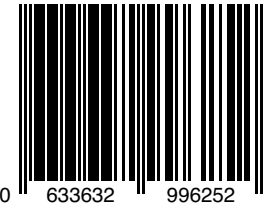
the QUILT FACTORY

Pattern designs by Deb Grogan
Email: Deb@thequiltfactory.com
www.thequiltfactory.com

Check It Out QF-2019

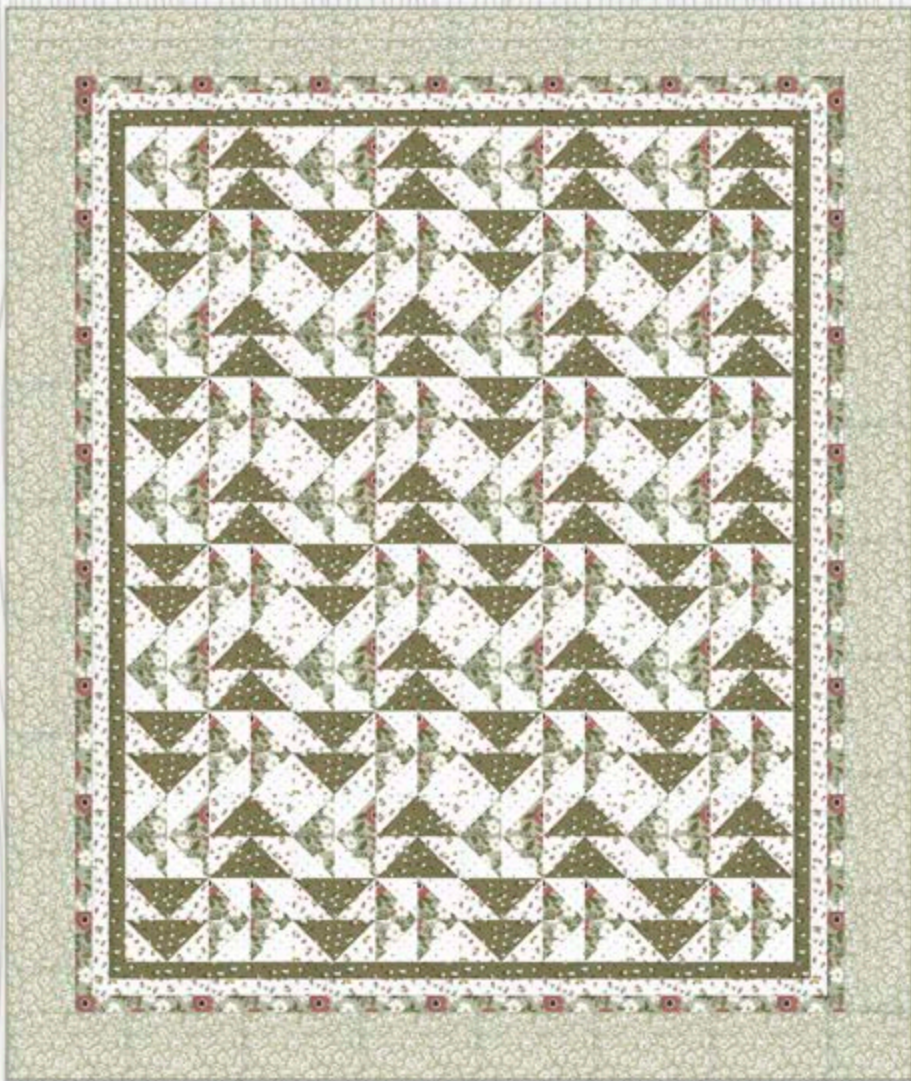
moda
UNITED NOTIONS

Fabric for our sample quilt generously supplied by Moda Fabrics.



©2020 The Quilt Factory/Debra Grogan. All rights reserved. This pattern may not be reproduced or shared. Pattern may be used by one person for personal use or to make finished goods for charities, sale in retail and on-line shops or craft fairs, but may not be mass produced. We have made every attempt to provide you with accurate information, if you have any questions please email us at: Deb@thequiltfactory.com

Fly Away Home II



A Fab 5 Quilt Pattern
55 x 65
#QF-2012



Fly Away Home II

Necessities for a 55 x 65 inch Quilt



Fabric A - Large floral on sage 1 yard
Block, Border 3
Moda Folktales 5120-14

Fabric B - Cream floral on sage 1 yard
Border 4
Moda Folktales 5121-14

Fabric C - Small floral on off white 1 yard
Block, Border 2
Moda Folktales 5123-11

Fabric D - Small floral on olive 1 yard
Block, Border 1
Moda Folktales 5123-15

Fabric E - Multi dots on off white 1 yard
Block
Moda Folktales 5124-11

Binding Lt. green/cream stripes 1/2 Yard
Moda Folktales 5125-15

Backing fabric of choice 3 1/2 yards 44
inch wide (pieced) or 1 3/4 yards 90 inches
wide.

Batting 1 3/4 yards 90 inch wide or
packaged Twin.

Notions and Such:

Matching thread for seams.

Recommended Tools:

Rotary cutter, mat and ruler. Iron.

the QUILT FACTORY

Pattern designs by Deb Grogan
Email: Deb@thequiltfactory.com
www.thequiltfactory.com

Fly Away Home II QF-2012

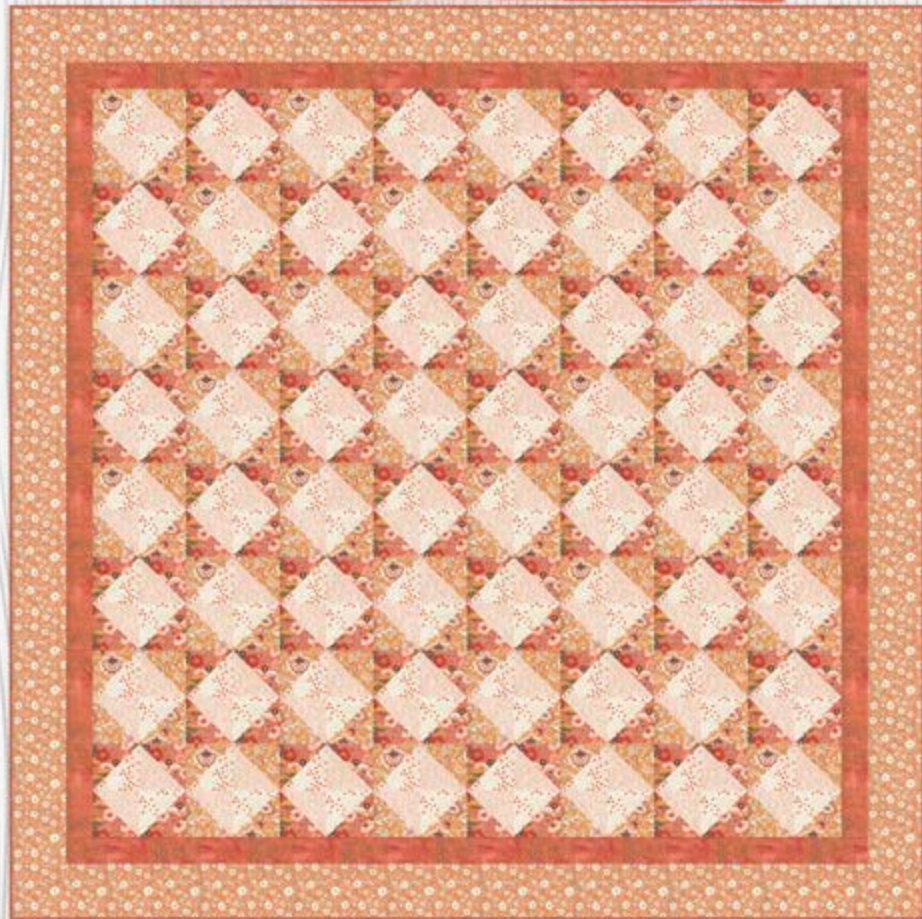
moda
UNITED NOTIONS

Fabric for our sample quilt generously supplied
by Moda Fabrics.



©2020 The Quilt Factory/Debra Grogan. All rights reserved. This pattern may not be reproduced or shared. Pattern may be used by one person for personal use or to make finished goods for charities, sale in retail and on-line shops or craft fairs, but may not be mass produced. We have made every attempt to provide you with accurate information, if you have any questions please email us at: Deb@thequiltfactory.com

Boxed In



A Simple Six Quilt Pattern
68 x 68
#QF-2013



Boxed In



Necessities for a 68 x 68 inch Quilt

Fabric A - Mod floral on orange 1 yard
Block
Moda Cider 30640-15

Fabric B - Tonal floral on lt. orange 1 yard
Block
Moda Cider 30641-12

Fabric C- Small floral on lt. orange 1 yard
Border 2
Moda Cider 30645-12

Fabric D- Orange dots on cream 1 yard
Block
Moda Cider 30647-11

Fabric E- Orange line geometric on cream 1 yard
Block
Moda Cider 30648-12

Fabric F- Pumpkin grunge 1 yard
Border 1, Binding
Moda Cider 30150-544

Backing fabric of choice 4 ¼ yards 44
inch wide (pieced) or 2 ½ yards 90 inches
wide.

Batting 2 ⅞ yards 90 inch wide or
packaged twin.

Notions and Such:

Matching thread for seams.

Recommended Tools:

Rotary cutter, mat and ruler. Iron.

the QUILT FACTORY

Pattern designs by Deb Grogan
Email: Deb@thequiltfactory.com
www.thequiltfactory.com

Boxed In QF-2013

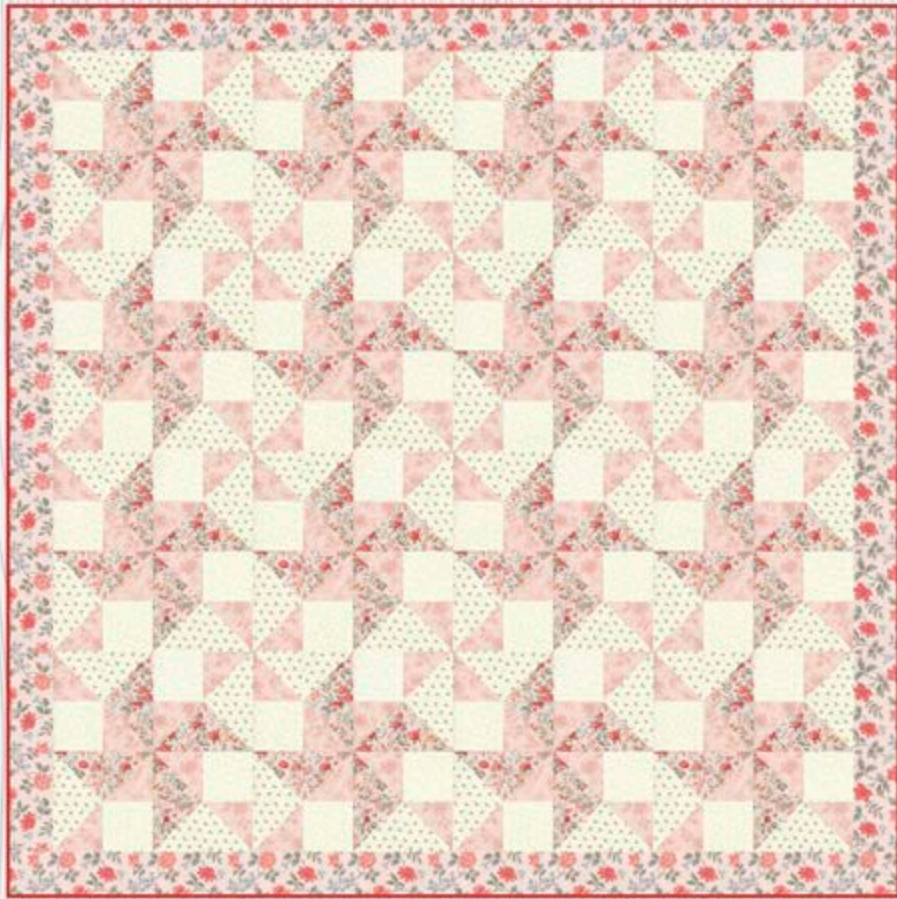


moda
UNITED NOTIONS

Fabric for our sample quilt generously supplied
by Moda Fabrics.

©2020 The Quilt Factory/Debra Grogan. All rights reserved. This pattern may not be reproduced or shared. Pattern may be used by one person for personal use or to make finished goods for charities, sale in retail and on-line shops or craft fairs, but may not be mass produced. We have made every attempt to provide you with accurate information, if you have any questions please email us at: Deb@thequiltfactory.com

Windmills II



Windmills II



A Fab 5 Pattern 64 x 64 inch Quilt Pattern

Fabric A Blush floral with birds 1 yard
Block
Moda Daybreak 44241-12

Fabric B Blush large floral 1 yard
Border
Moda Daybreak 44242-12

Fabric C Blush tonal large floral 1 yard
Block
Moda Daybreak 44242-22

Fabric D Cream mini leaves 1 yard
Block
Moda Daybreak 44247-11

Fabric E Cream tonal mini floral 1 yard
Block
Moda Daybreak 44248-11

Binding Tomato Soup 1/2 yard
Moda Bella Solid 9900-42

Backing fabric of choice 4 yards 44 inches
or 2 yards 90 inch wide.

Batting 2 yards 90 inch wide or packaged
Twin

Notions and Such: Matching thread for
seams.

Recommended Tools: Rotary cutter, mat
and ruler.

Uses just 5 yards of Fabric plus the binding!

*A Fab 5 Quilt Pattern
64 x 64*

#QF-2009



the QUILT FACTORY

Pattern designs by Deb Grogan
Email: Deb@thequiltfactory.com
www.thequiltfactory.com

Windmills II QF-2009

moda
UNITED NOTIONS

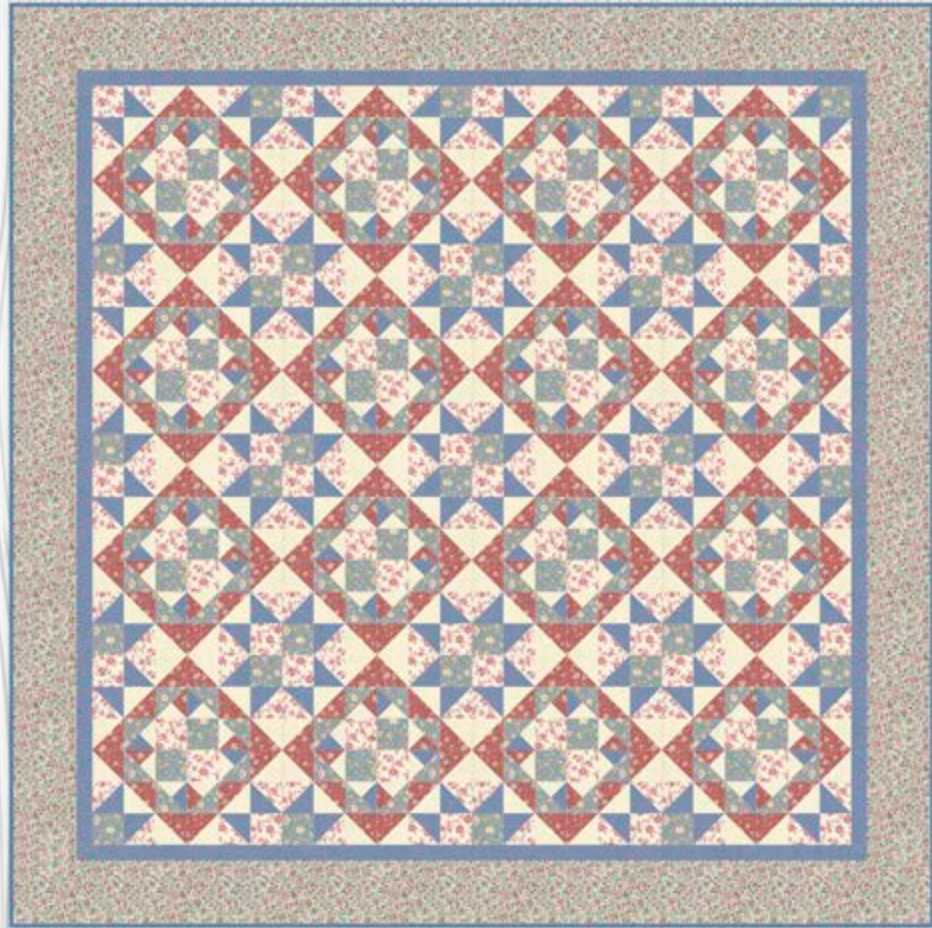
Fabric for our sample quilt generously supplied
by Moda Fabrics.



0 633632 996153

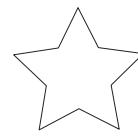
©2020 The Quilt Factory/Debra Grogan. All rights reserved. This pattern may not be reproduced or shared. Pattern may be used by one person for personal use or to make finished goods for charities, sale in retail and on-line shops or craft fairs, but may not be mass produced. We have made every attempt to provide you with accurate information, if you have any questions please email us at: Deb@thequiltfactory.com

Star Sampler



A Simple Six Quilt Pattern
60 x 60 inches
Uses just 6 yards of fabric!

#QF-2002



Star Sampler

60 x 60 inch Quilt



Fabric A Red floral 1 yard
Blocks
Moda Tres Jolie Lawns 13874-14LW

Fabric B Medium blue floral 1 yard
Blocks
Moda Tres Jolie Lawns 13876-18LW

Fabric C Light pale blue floral 1 yard
Border 2
Moda Tres Jolie Lawns 13876-20LW

Fabric D Cream with red floral 1 yard
Blocks
Moda Tres Jolie Lawns 13878-13LW

Fabric E Cream linen texture 1 yard
Blocks
Moda Tres Jolie Lawns 13529-21LW

Fabric F Medium blue linen texture 1 yard
Blocks, Border 1
Moda Tres Jolie Lawns 13529-167LW

Binding 1/2 yard
Moda Bella Solids 9900-49

Backing fabric of choice 3 $\frac{3}{4}$ yards 44 inches or 2 yards 90 inch wide.

Batting 2 yards 90 inch wide or packaged Twin

Notions and Such: Matching thread for seams.

Recommended Tools: Rotary cutter, mat and ruler.

Uses just 6 yards of fabric!

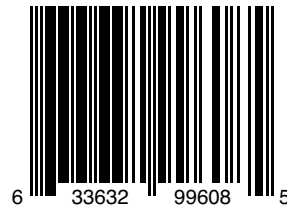
the QUILT FACTORY

Pattern designs by Deb Grogan
Email: Deb@thequiltfactory.com
www.thequiltfactory.com

Star Sampler QF-2002

moda
UNITED NOTIONS

Fabric for our sample quilt generously supplied by Moda Fabrics.



©2020 The Quilt Factory/Debra Grogan. All rights reserved. This pattern may not be reproduced or shared. Pattern may be used by one person for personal use or to make finished goods for charities, sale in retail and on-line shops or craft fairs, but may not be mass produced. We have made every attempt to provide you with accurate information, if you have any questions please email us at: Deb@thequiltfactory.com

Starlight Starbright



A Simple Six Quilt Pattern
64 x 64 inches

Uses just 6 yards of Fabric!

#QF-2003



Starlight Starbright



A Simple Six Pattern
64 x 64 inch Quilt

Fabric A Red damask 1 yard
Blocks, Border 2
Moda Marches de Noel 44231-12

Fabric B Dark green damask 1 yard
Blocks, Border 2
Moda Marches de Noel 44231-14

Fabric C Green paisley 1 yard
Blocks, Border 1, sashing posts
Moda Marches de Noel 44232-13

Fabric D Cream with green berries 1 yard
Blocks
Moda Marches de Noel 44235-21

Fabric E Red with berries 1 yard
Blocks
Moda Marches de Noel 44235-22

Fabric F Red with vines and flowers 1 yard
Blocks
Moda Marches de Noel 44237-12

Binding 1/2 yard
Moda Bella Solid 9900-17

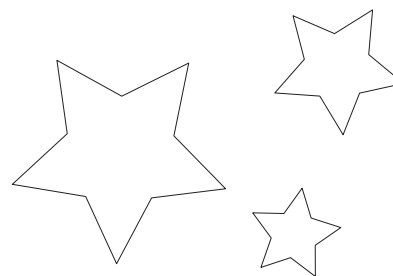
Backing fabric of choice 4 yards 44 inches or 2 yards 90 inch wide.

Batting 2 yards 90 inch wide or packaged Twin

Notions and Such: Matching thread for seams.

Recommended Tools: Rotary cutter, mat and ruler.

Uses just 6 yards of fabric!



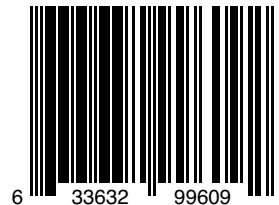
the QUILT FACTORY

Pattern designs by Deb Grogan
Email: Deb@thequiltfactory.com
www.thequiltfactory.com

Starlight Starbright QF-2003

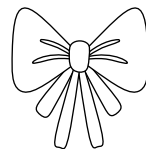
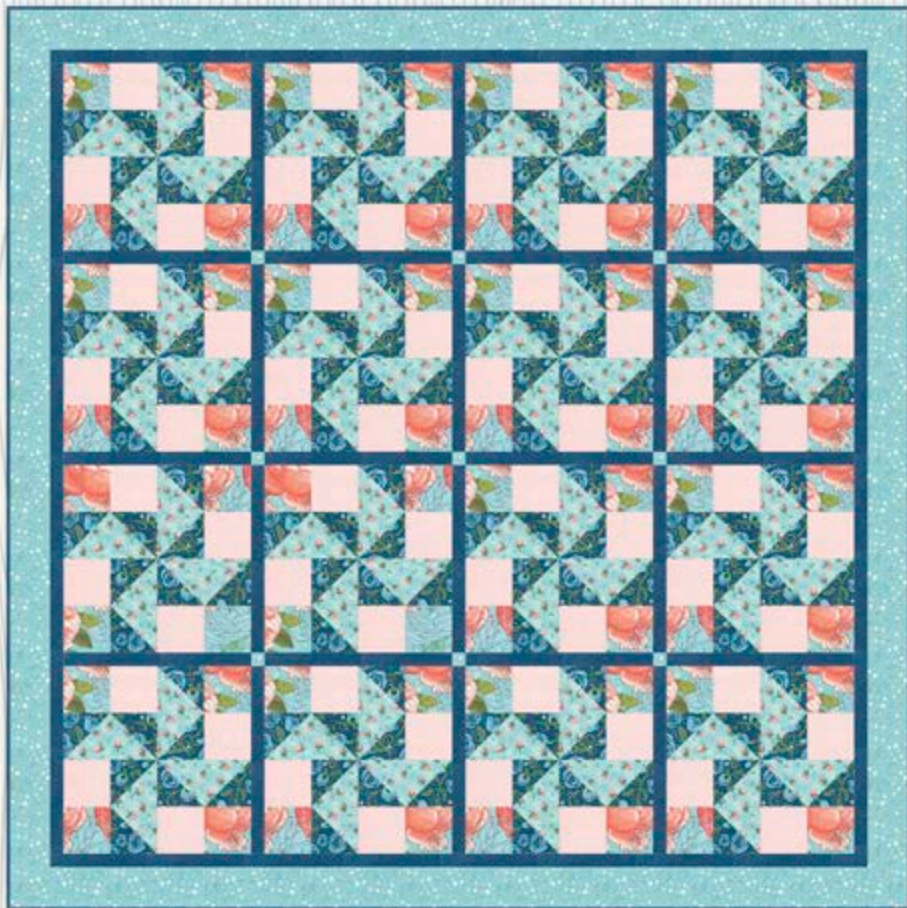
moda
UNITED NOTIONS

Fabric for our sample quilt generously supplied by Moda Fabrics.

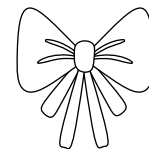


©2020 The Quilt Factory/Debra Grogan. All rights reserved. This pattern may not be reproduced or shared. Pattern may be used by one person for personal use or to make finished goods for charities, sale in retail and on-line shops or craft fairs, but may not be mass produced. We have made every attempt to provide you with accurate information, if you have any questions please email us at: Deb@thequiltfactory.com

Windrift



Windrift



A Simple Six Pattern 69 x 69 inch Quilt

Fabric A Cabbage rose on aqua 1 yard
Block
Moda Abby Rose 48670-15

Fabric B Medium floral on dark aqua 1 yard
Block
Moda Abby Rose 48671-16

Fabric C Rose buds on aqua 1 yard
Block
Moda Abby Rose 48672-15

Fabric D Cream flower spray on aqua 1 yard
Border 2, Sashing posts
Moda Abby Rose 48673-15

Fabric E Tiny crosshatch on dark aqua 1 yard
Border 1, Sashing
Moda Abby Rose 48626-89

Fabric F Tiny crosshatch on pale pink 1 yard
Block
Moda Abby Rose 48626-122

Binding 1/2 yard
Moda Bella Solid 9900-329 Harbor

Backing fabric of choice 4 1/4 yards 44 inches
or 2 1/8 yards 90 inch wide.

Batting 2 1/8 yards 90 inch wide or
packaged Full

Notions and Such: Matching thread for
seams.

Recommended Tools: Rotary cutter, mat
and ruler.

Uses just 6 yards of Fabric plus the binding!

A Simple Six 69 x 69 inch Quilt Pattern

#QF-1926

Uses just 6 yards of fabric!

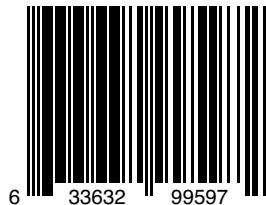
the QUILT FACTORY

Pattern designs by Deb Grogan
Email: Deb@thequiltfactory.com
www.thequiltfactory.com

Windrift QF-1926

moda
UNITED NOTIONS

Fabric for our sample quilt generously supplied
by Moda Fabrics.



©2019 The Quilt Factory/Debra Grogan. All rights reserved. This pattern may not be reproduced or shared. Pattern may be used by one person for personal use or to make finished goods for charities, sale in retail and on-line shops or craft fairs, but may not be mass produced. We have made every attempt to provide you with accurate information, if you have any questions please email us at: Deb@thequiltfactory.com

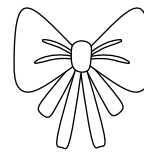


Whispers

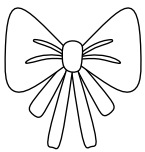


A Simple Six 69 x 69 inch Quilt Pattern

#QF-1925



Whispers



A Simple Six Pattern 69 x 69 inch Quilt

Fabric A Rose on Taupe 1 yard
Block
Moda Bloomington 5110-12

Fabric B Floral spray on eggshell 1 yard
Block
Moda Bloomington 5112-11

Fabric C Floral spray on taupe 1 yard
Border 2, Sashing posts
Moda Bloomington 5112-12

Fabric D Tonal dot on eggshell 1 yard
Block
Moda Bloomington 5114-11

Fabric E Tonal dot on rose 1 yard
Sashing, Border 1
Moda Bloomington 5114-14

Fabric F Mini lattice on taupe 1 yard
Block
Moda Bloomington 5115-12

Binding 1/2 yard
Moda Bella Solid 9900-210 Strawberry

Backing fabric of choice 4 1/4 yards 44 inches
or 2 1/8 yards 90 inch wide.

Batting 2 1/8 yards 90 inch wide or
packaged Full

Notions and Such: Matching thread for
seams.

Recommended Tools: Rotary cutter, mat
and ruler.

Uses just 6 yards of Fabric plus the binding!

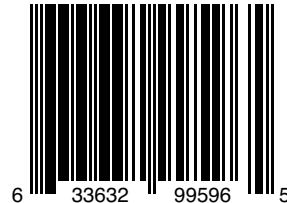
the QUILT FACTORY

Pattern designs by Deb Grogan
Email: Deb@thequiltfactory.com
www.thequiltfactory.com

Whispers QF-1925

moda
UNITED NOTIONS

Fabric for our sample quilt generously supplied
by Moda Fabrics.



©2019 The Quilt Factory/Debra Grogan. All rights reserved. This pattern may not be reproduced or shared. Pattern may be used by one person for personal use or to make finished goods for charities, sale in retail and on-line shops or craft fairs, but may not be mass produced. We have made every attempt to provide you with accurate information, if you have any questions please email us at: Deb@thequiltfactory.com

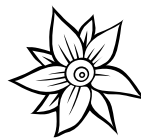
WOVEN



A Fab 5 Quilt Pattern
65 x 65 inches

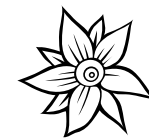
Uses just 5 yards of fabric!

#QF-1927



WOVEN

A Fab 5 Pattern 65 x 65 inch Quilt



Fabric A Multi stripe 1 yard
Border 3
Moda Glad Tidings 38090-11

Fabric B Floral spray on red 1 yard
Block
Moda Glad Tidings 38093-11

Fabric C Floral spray on ivory 1 yard
Border 2
Moda Glad Tidings 38093-13

Fabric D Floral spray on gold 1 yard
Block
Moda Glad Tidings 38093-14

Fabric E Leaf on ivory 1 yard
Block, Border 1
Moda Glad Tidings 38094-13

Binding 1/2 yard
Moda Bella Solid 9900-229 Brick Road

Backing fabric of choice 4 yards 44 inches or 2 yards 90 inch wide.

Batting 2 yards 90 inch wide or packaged twin

Notions and Such: Matching thread for seams.

Recommended Tools: Rotary cutter, mat and ruler.

Uses just 5 yards of Fabric plus the binding!

the QUILT FACTORY

Pattern designs by Deb Grogan
Email: Deb@thequiltfactory.com
www.thequiltfactory.com

Woven QF-1927

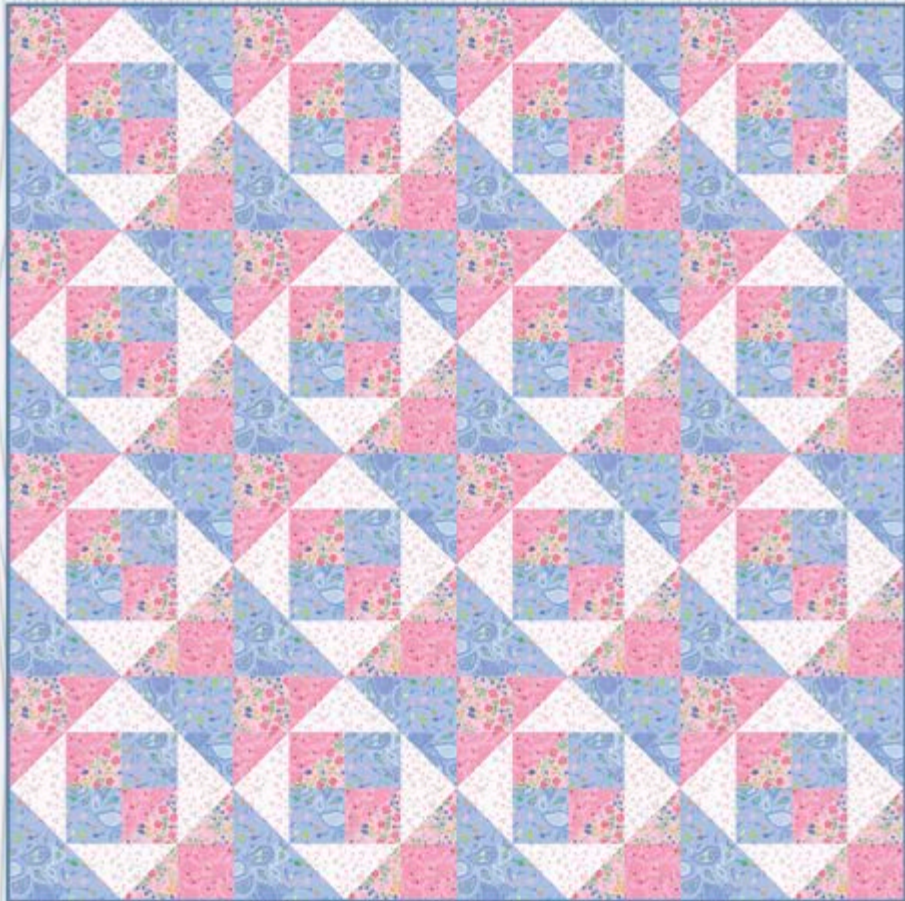
moda
UNITED NOTIONS

Fabric for our sample quilt generously supplied by Moda Fabrics.



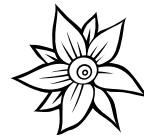
©2020 The Quilt Factory/Debra Grogan. All rights reserved. This pattern may not be reproduced or shared. Pattern may be used by one person for personal use or to make finished goods for charities, sale in retail and on-line shops or craft fairs, but may not be mass produced. We have made every attempt to provide you with accurate information, if you have any questions please email us at: Deb@thequiltfactory.com

Whimsy

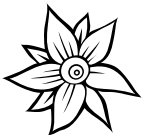


*A Fab 5 Quilt Pattern
57 x 57 inches
Uses just 5 yards of fabric!*

#QF-1929



Whimsy



A Fab 5 Pattern 57 x 57 inch Quilt

Fabric A Floral spray on pink 1 yard
Block
Moda Sunday Picnic 20672-13

Fabric B Paisley on blue 1 yard
Block
Moda Sunday Picnic 20673-16

Fabric C Kites on blue 1 yard
Block
Moda Sunday Picnic 20675-16

Fabric D Floral with ladybug on pink 1 yard
Block
Moda Sunday Picnic 20676-14

Fabric E Pink butterflies/flowers on white 1 yard
Block
Moda Sunday Picnic 20677-23

Binding 1/2 yard
Moda Bella Solid 9900-116 Dusk

Backing fabric of choice 3 1/2 yards 44 inches or 1 3/4 yards 90 inch wide.

Batting 1 3/4 yards 90 inch wide or packaged Twin

Notions and Such: Matching thread for seams.

Recommended Tools: Rotary cutter, mat and ruler.

Uses just 5 yards of Fabric plus the binding!

the QUILT FACTORY

Pattern designs by Deb Grogan
Email: Deb@thequiltfactory.com
www.thequiltfactory.com

Whimsy QF-1929

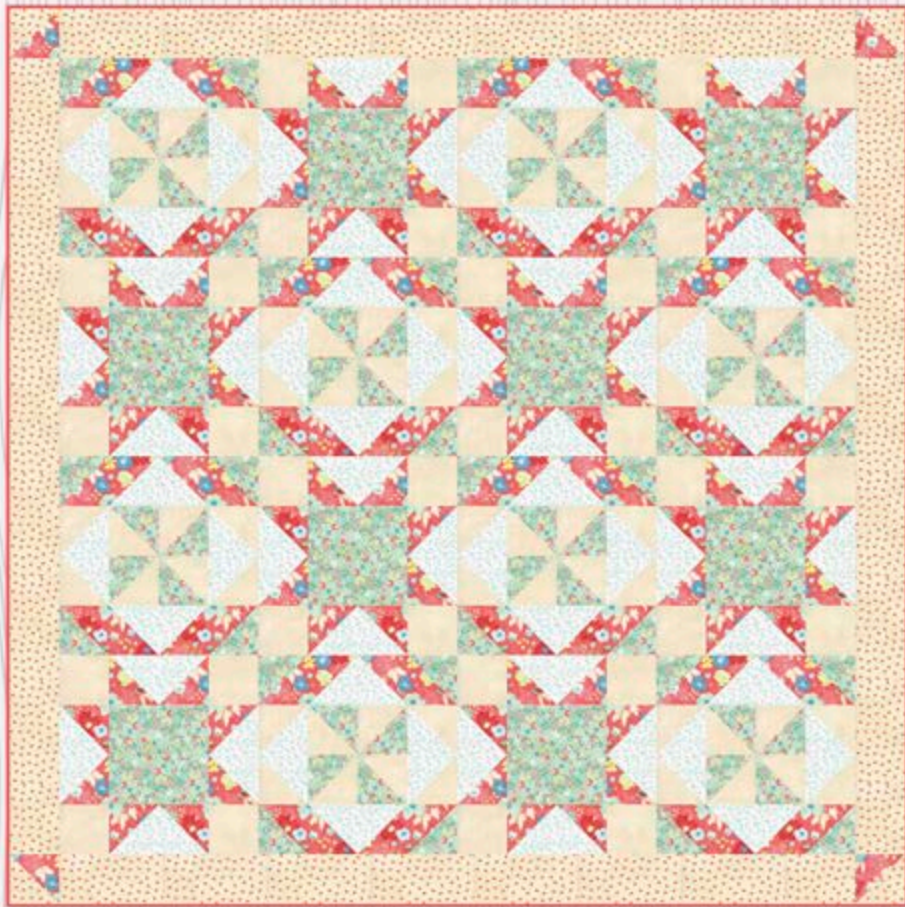
moda
UNITED NOTIONS

Fabric for our sample quilt generously supplied by Moda Fabrics.



©2019 The Quilt Factory/Debra Grogan. All rights reserved. This pattern may not be reproduced or shared. Pattern may be used by one person for personal use or to make finished goods for charities, sale in retail and on-line shops or craft fairs, but may not be mass produced. We have made every attempt to provide you with accurate information, if you have any questions please email us at: Deb@thequiltfactory.com

Wanderlust



A Fab 5 Quilt Pattern
63 x 63 inches
Uses just 5 yards of fabric!

#QF-1928



Wanderlust



A Fab 5 Pattern 63 x 63 inch Quilt

Fabric A Flowers on coral 1 yard
Block, Border corners
Moda Gypsy Soul 30620-20

Fabric B Tiny floral on green 1 yard
Block
Moda Gypsy Soul 30621-17

Fabric C Tiny geometric on yellow 1 yard
Border
Moda Gypsy Soul 30624-15

Fabric D Viney floral on lt. cream 1 yard
Block
Moda Gypsy Soul 30625-20

Fabric E Cream Grunge 1 yard
Block
Moda Grunge 30150-533

Binding 1/2 yard
Moda Bella Solid 9900-258 Geranium

Backing fabric of choice 4 yards 44 inches or 2 yards 90 inch wide.

Batting 2 yards 90 inch wide or packaged Twin

Notions and Such: Matching thread for seams.

Recommended Tools: Rotary cutter, mat and ruler.

Uses just 5 yards of Fabric plus the binding!

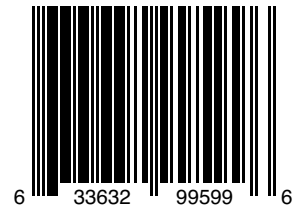
the QUILT FACTORY

Pattern designs by Deb Grogan
Email: Deb@thequiltfactory.com
www.thequiltfactory.com

Wanderlust QF-1928

moda
UNITED NOTIONS

Fabric for our sample quilt generously supplied by Moda Fabrics.



©2019 The Quilt Factory/Debra Grogan. All rights reserved. This pattern may not be reproduced or shared. Pattern may be used by one person for personal use or to make finished goods for charities, sale in retail and on-line shops or craft fairs, but may not be mass produced. We have made every attempt to provide you with accurate information, if you have any questions please email us at: Deb@thequiltfactory.com

Windmills



A Fab 5 Quilt Pattern
54 x 70 inches

QF-1822



Windmills



A Fab 5 Pattern 56 x 72 inch Quilt

Fabric A Dark Blue Paisley 1 yard
Block
Moda Crystal Lake 14870-13

Fabric B Light Blue Flourish 1 yard
Block
Moda Crystal Lake 14872-11

Fabric C Ivory Clouds 1 yard
Block
Moda Crystal Lake 14873-15

Fabric D Ivory with blue Stars 1 yard
Border
Moda Crystal Lake 14876-14

Fabric E Cream and Tan flower bud 1 yard
Block
Moda Crystal Lake 14877-15

Binding 1/2 yard
Moda Bella Solid 9900-236

Backing fabric of choice 4 1/4 yards 44 inches
or 1 2/3 yards 90 inch wide.

Batting 1 2/3 yards 90 inch wide or pack-
aged Twin

Notions and Such: Matching thread for
seams.

Recommended Tools: Rotary cutter, mat
and ruler.

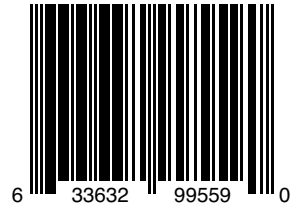
the QUILT FACTORY

Pattern designs by Deb Grogan
Email: Deb@thequiltfactory.com
www.thequiltfactory.com

Fab 5 Windmills QF-1822

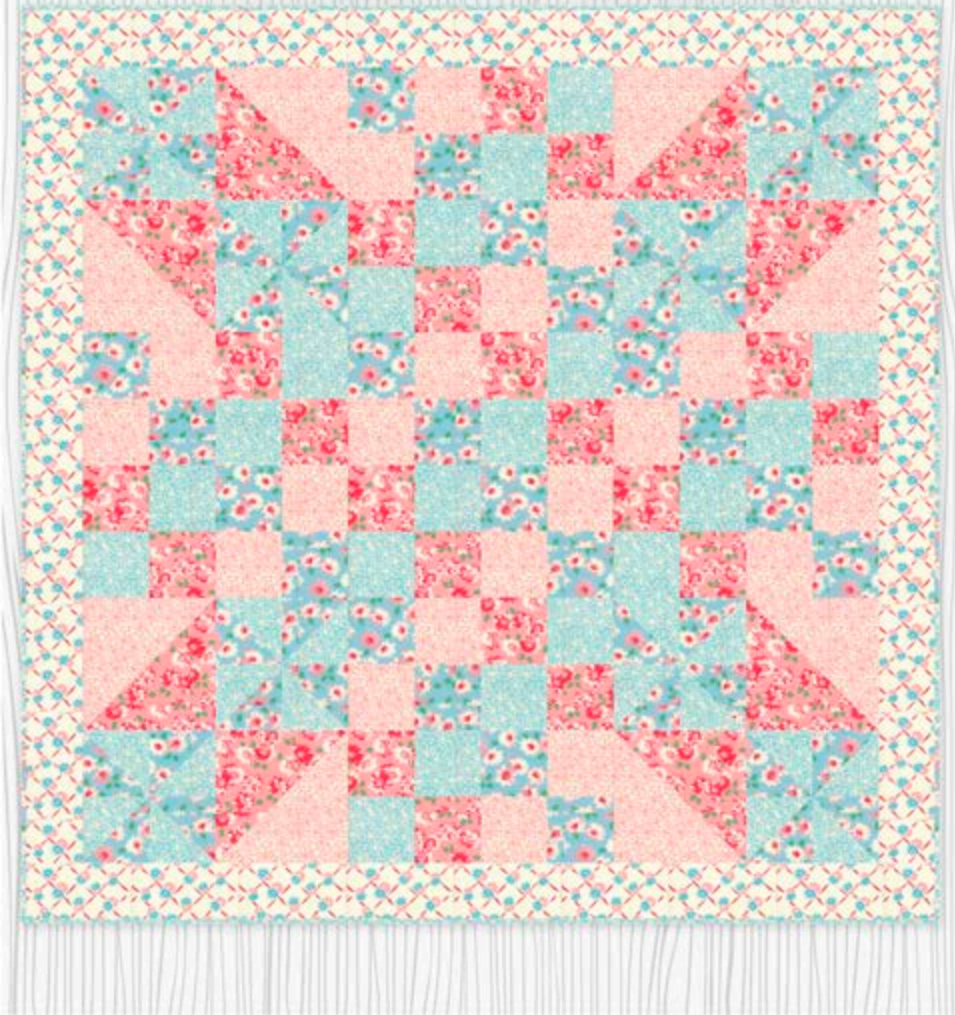
moda
UNITED NOTIONS

Fabric for our sample quilt generously supplied
by Moda Fabrics.



©2018 The Quilt Factory/Debra Grogan. All rights reserved. This pattern may not be reproduced or shared. Pattern may be used by one person for personal use or to make finished goods for charities, sale in retail and on-line shops or craft fairs, but may not be mass produced. We have made every attempt to provide you with accurate information, if you have any questions please email us at: Deb@thequiltfactory.com

Summer Picnic



*A Fab 5 Quilt Pattern
62x62 inches*

#QF-1821



Summer Picnic

A Fab 5 Pattern 62 x 62 inch Quilt



Fabric A Pink large floral 1 yard
Block and Binding
Moda Cheeky 31143-12

Fabric B Blue large floral 1 yard
Block
Moda Cheeky 31143-14

Fabric C Ivory floral and cross hatch 1 yard
Border
Moda Cheeky 31144-11

Fabric D Pink mini floral 1 yard
Block and Binding
Moda Cheeky 31145-11

Fabric E Blue mini floral 1 yard
Block
Moda Cheeky 31145-14

Binding included in Fabrics A and D

Backing fabric of choice 4 yards 44 inches
or 2 yards 90 inch wide.

Batting 2 yards 90 inch wide or packaged
Twin

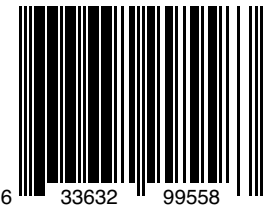
Notions and Such: Matching thread for
seams.

Recommended Tools: Rotary cutter, mat
and ruler.

the QUILT FACTORY

Pattern designs by Deb Grogan
Email: Deb@thequiltfactory.com
www.thequiltfactory.com

Fab 5 Summer Picnic QF-1821



moda
UNITED NOTIONS

Fabric for our sample quilt generously supplied
by Moda Fabrics.

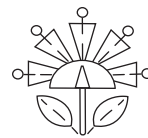
©2018 The Quilt Factory/Debra Grogan. All rights reserved. This pattern may not be reproduced or shared. Pattern may be used by one person for personal use or to make finished goods for charities, sale in retail and on-line shops or craft fairs, but may not be mass produced. We have made every attempt to provide you with accurate information, if you have any questions please email us at: Deb@thequiltfactory.com

Hopscotch



A Fab 5 Pattern
56 x 68 inch Quilt Pattern

#QF-1825



Hopscotch

A Fab 5 Pattern 56 x 68 inch Quilt



Fabric A Red flower 1 yard
Blocks
Moda Sweet Harmony 21752-13

Fabric B Blue Flower 1 yard
Blocks
Moda Sweet Harmony 21752-17

Fabric C Daisy check 1 yard
Blocks
Moda Sweet Harmony 21754-15

Fabric D Yellow dot 1 yard
Blocks
Moda Sweet Harmony 21098-143

Fabric E Red dot 1 yard
Border
Moda Sweet Harmony 21098-145

Binding 1/2 yard
Moda Bella Solid9900-19

Backing fabric of choice 3 1/2 yards 44 inches
or 1 3/4 yards 90 inch wide.

Batting 3 2/3 yards 90 inch wide or pack-
aged Twin

Notions and Such: Matching thread for
seams.

Recommended Tools: Rotary cutter, mat
and ruler.

the QUILT FACTORY

Pattern designs by Deb Grogan
Email: Deb@thequiltfactory.com
www.thequiltfactory.com

Fab 5 Hopscotch QF-1825

moda
UNITED NOTIONS

Fabric for our sample quilt generously supplied
by Moda Fabrics.



©2018 The Quilt Factory/Debra Grogan. All rights reserved. This pattern may not be reproduced or shared. Pattern may be used by one person for personal use or to make finished goods for charities, sale in retail and on-line shops or craft fairs, but may not be mass produced. We have made every attempt to provide you with accurate information, if you have any questions please email us at: Deb@thequiltfactory.com

Fly Away Home



A Tab 5 Pattern
62 x 62 inch Quilt
#QF-1824



Fly Away Home

A Fab 5 Pattern 62 x 62 inch Quilt



Fabric A Med brown flower 1 yard
Block and sashing
Moda Hickory Road 38060-15

Fabric B Brick Red Flower 1 yard
Block
Moda Hickory Road 38060-18

Fabric C Dark Brown flower bouquet 1 yard
Block
Moda Hickory Road 38062-15

Fabric D Light Tan flower bud 1 yard
Block and sashing posts
Moda Hickory Road 38066-12

Fabric E Light Brown flower bud 1 yard
Block
Moda Hickory Road 38066-13

Binding 1/2 yard
Moda Bella Solid 9900-71

Backing fabric of choice 3 7/8 yards 44 inches or 2 yards 90 inch wide.

Batting 2 yards 90 inch wide or packaged Twin

Notions and Such: Matching thread for seams.

Recommended Tools: Rotary cutter, mat and ruler.

Uses just 5 yards of Fabric plus the binding!

the QUILT FACTORY

Pattern designs by Deb Grogan
Email: Deb@thequiltfactory.com
www.thequiltfactory.com

Fab 5 Fly Away Home QF-1824

moda
UNITED NOTIONS

Fabric for our sample quilt generously supplied
by Moda Fabrics.



©2018 The Quilt Factory/Debra Grogan. All rights reserved. This pattern may not be reproduced or shared. Pattern may be used by one person for personal use or to make finished goods for charities, sale in retail and on-line shops or craft fairs, but may not be mass produced. We have made every attempt to provide you with accurate information, if you have any questions please email us at: Deb@thequiltfactory.com

Hugs and Kisses



A Fab 5 Pattern
64 x 64 Quilt
#QF-1823



Hugs and Kisses



A Fab 5 Pattern 56 x 56 inch Quilt

Fabric A Ivory large floral 1 yard
Block
Moda Walkabout 37560-11

Fabric B Tan large floral 1 yard
Block
Moda Walkabout 37560-19

Fabric C Tan geometric 1 yard
Block
Moda Walkabout 37565-18

Fabric D Ivory geometric 1 yard
Block
Moda Walkabout 37565-19

Fabric E Ivory and Coral stripe 1 yard
Border
Moda Walkabout 37566-11

Binding 1/2 yard
Moda Bella Solid 9900-258

Backing fabric of choice 4 yards 44 inches
or 2 yards 90 inch wide.

Batting 2 yards 90 inch wide or packaged
Twin

Notions and Such: Matching thread for
seams.

Recommended Tools: Rotary cutter, mat
and ruler.

Uses just 5 yards of Fabric plus the binding!

the QUILT FACTORY

Pattern designs by Deb Grogan
Email: Deb@thequiltfactory.com
www.thequiltfactory.com

Fab 5 Hugs and Kisses QF-1823

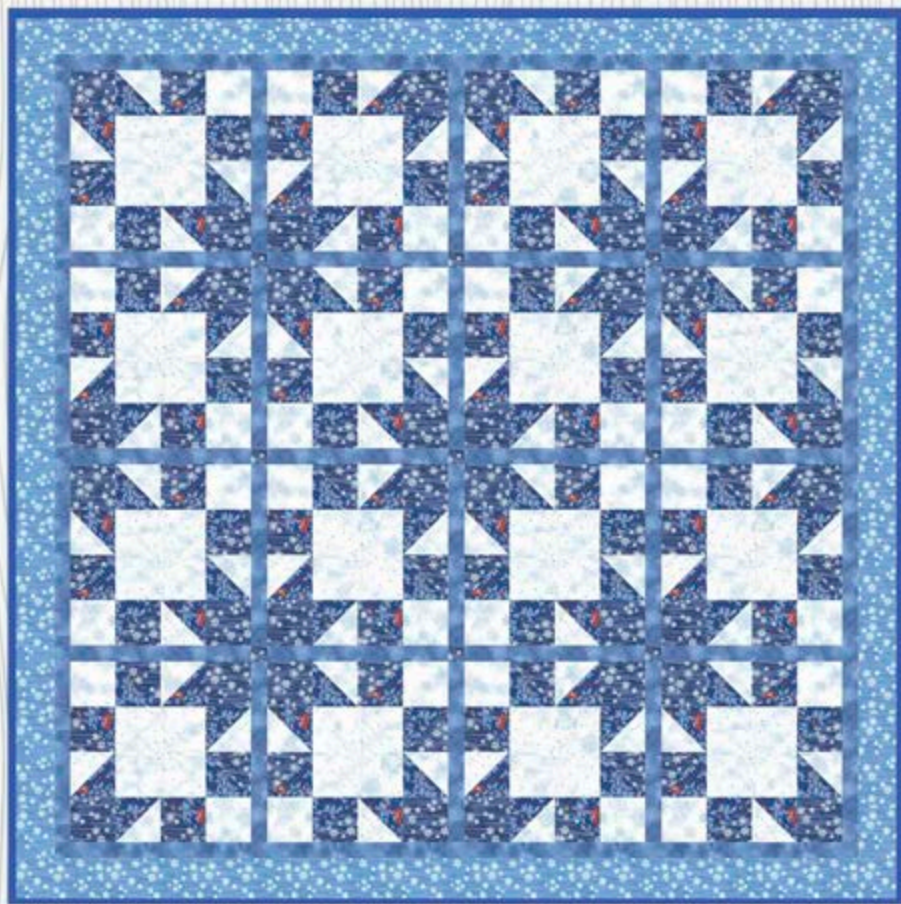
moda
UNITED NOTIONS

Fabric for our sample quilt generously supplied
by Moda Fabrics.



©2018 The Quilt Factory/Debra Grogan. All rights reserved. This pattern may not be reproduced or shared. Pattern may be used by one person for personal use or to make finished goods for charities, sale in retail and on-line shops or craft fairs, but may not be mass produced. We have made every attempt to provide you with accurate information, if you have any questions please email us at: Deb@thequiltfactory.com

Winter Chill



A Simple Six Quilt Pattern
69 x 69 inches
Uses just 6 Yards of Fabric!

QF-1830



Winter Chill

A Simple Six Pattern 69 x 69 inch Quilt



Fabric A Dark blue cardinals 1 yard
Block
Moda Forest Frost Glitter Favorites 33410-17M

Fabric B Medium blue snowflakes 1 yard
Border 2
Moda Forest Frost Glitter Favorites 33412-15M

Fabric C Dark blue snowflakes 1 yard
Block, Sashing posts
Moda Forest Frost Glitter Favorites 33412-17M

Fabric D Blue on white snowflakes 1 yard
Block
Moda Forest Frost Glitter Favorites 33414-13M

Fabric E Blue on blue snowflakes 1 yard
Sashing, Border 1
Moda Forest Frost Glitter Favorites 33414-14M

Fabric F Blue stars on white 1 yard
Block
Moda Forest Frost Glitter Favorites 33415-13M

Binding 1/2 yard
Moda Bella Solid 9900-227 Cobalt

Backing fabric of choice 4 1/4 yards 44 inches or 2 1/8 yards 90 inch wide.

Batting 2 1/8 yards 90 inch wide or packaged Full

Notions and Such: Matching thread for seams.

Recommended Tools: Rotary cutter, mat and ruler.

Uses just 6 yards of Fabric plus the binding!

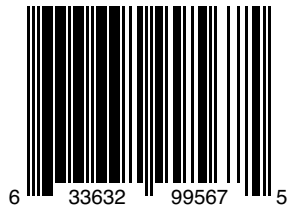
the QUILT FACTORY

Pattern designs by Deb Grogan
Email: Deb@thequiltfactory.com
www.thequiltfactory.com

Winter Chill QF-1830

moda
UNITED NOTIONS

Fabric for our sample quilt generously supplied by Moda Fabrics.



©2019 The Quilt Factory/Debra Grogan. All rights reserved. This pattern may not be reproduced or shared. Pattern may be used by one person for personal use or to make finished goods for charities, sale in retail and on-line shops or craft fairs, but may not be mass produced. We have made every attempt to provide you with accurate information, if you have any questions please email us at: Deb@thequiltfactory.com

Oh Little Star



*A Simple Six Quilt Pattern
69 x 69 inches*

Uses just 6 yards of Fabric!

#QF-1832



Oh Little Star

A Simple Six Pattern 69 x 69 inch Quilt



Fabric A Damask print cream/red 1 yard
Border 2
Moda Cinaberry 44200-11

Fabric B Damask print red 1 yard
Block
Moda Cinaberry 44200-13

Fabric C Cream tonal floral 1 yard
Block, Sashing posts
Moda Cinaberry 44201-21

Fabric D Red tonal floral 1 yard
Block
Moda Cinaberry 44202-11

Fabric E Red tiny berry vine 1 yard
Sashing, Border 1
Moda Cinaberry 44207-14

Fabric F Cream tiny berry vine 1 yard
Block
Moda Cinaberry 44207-21

Binding 1/2 yard
Moda Bella Solid 9900-144 Azalea

Backing fabric of choice 4 1/4 yards 44 inches
or 2 1/8 yards 90 inch wide.

Batting 2 1/8 yards 90 inch wide or
packaged Full

Notions and Such: Matching thread for
seams.

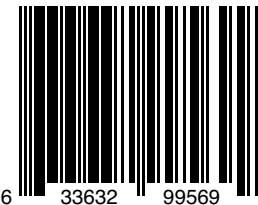
Recommended Tools: Rotary cutter, mat
and ruler.

Uses just 6 yards of Fabric plus the binding!

the QUILT FACTORY

Pattern designs by Deb Grogan
Email: Deb@thequiltfactory.com
www.thequiltfactory.com

Oh Little Star QF-1832



6 33632 99569 9

moda
UNITED NOTIONS

Fabric for our sample quilt generously supplied
by Moda Fabrics.

©2019 The Quilt Factory/Debra Grogan. All rights reserved. This pattern may not be reproduced or shared. Pattern may be used by one person for personal use or to make finished goods for charities, sale in retail and on-line shops or craft fairs, but may not be mass produced. We have made every attempt to provide you with accurate information, if you have any questions please email us at: Deb@thequiltfactory.com

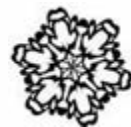
Christmas Kisses



A Fab 5 Quilt Pattern
66 x 66 inches

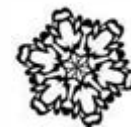
Uses just 5 yards of Fabric!

#QF-1831



Christmas Kisses

A Fab 5 Pattern 66 x 66 inch Quilt



Fabric A Gold on red pointsettias 1 yard
Block
Moda Cardinal Song 33421-12M

Fabric B Cardinals on cream 1 yard
Block
Moda Cardinal Song 33422-11M

Fabric C Pine branches on cream 1 yard
Block
Moda Cardinal Song 33423-12M

Fabric D Mistletoe spray on cream 1 yard
Border
Moda Cardinal Song 33424-11M

Fabric E Gold scroll on cream 1 yard
Block
Moda Cardinal Song 33425-11M

Binding 1/2 yard
Moda Bella Solid 9900-17 Country Red

Backing fabric of choice 4 yards 44 inch-
es or 2 1/8 yards 90 inch wide.

Batting 2 1/8 yards 90 inch wide or
packaged Full

Notions and Such: Matching thread for
seams.

Recommended Tools: Rotary cutter,
mat and ruler.

Uses just 5 yards of Fabric plus the binding!

the QUILT FACTORY

Pattern designs by Deb Grogan
Email: Deb@thequiltfactory.com
www.thequiltfactory.com

Christmas Kisses QF-1831

moda
UNITED NOTIONS

Fabric for our sample quilt generously supplied
by Moda Fabrics.



©2019 The Quilt Factory/Debra Grogan. All rights reserved. This pattern may not be reproduced or shared. Pattern may be used by one person for personal use or to make finished goods for charities, sale in retail and on-line shops or craft fairs, but may not be mass produced. We have made every attempt to provide you with accurate information, if you have any questions please email us at: Deb@thequiltfactory.com

Wicked



A Fab 5 Pattern
62 x 62 inches
Uses just 5 yards of Fabric!

#QF-1829



Wicked

A Fab 5 Pattern 62 x 62 inch Quilt



Fabric A Light Pumpkin floral 1 yard
Block
Moda All Hallow's Eve 20350-11

Fabric B Grey floral 1 yard
Block
Moda All Hallow's Eve 20350-15

Fabric C Cream/ light pumpkin floral 1 yard
Block
Moda All Hallow's Eve 20350-16

Fabric D Black polkadot circles 1 yard
Block, Border 2
Moda All Hallow's Eve 20354-13

Fabric E Cream w/blk polkadot circles 1 yard
Block, Border 1 and 2
Moda All Hallow's Eve 20354-27

Binding 1/2 yard
Moda Bella Solid 9900-99 Black

Backing fabric of choice 4 yards 44 inches
or 2 yards 90 inch wide.

Batting 2 yards 90 inch wide or packaged
Twin

Notions and Such: Matching thread for
seams.

Recommended Tools: Rotary cutter, mat
and ruler.

Uses just 5 yards of Fabric plus the binding!

the QUILT FACTORY

Pattern designs by Deb Grogan
Email: Deb@thequiltfactory.com
www.thequiltfactory.com

Wicked QF-1829

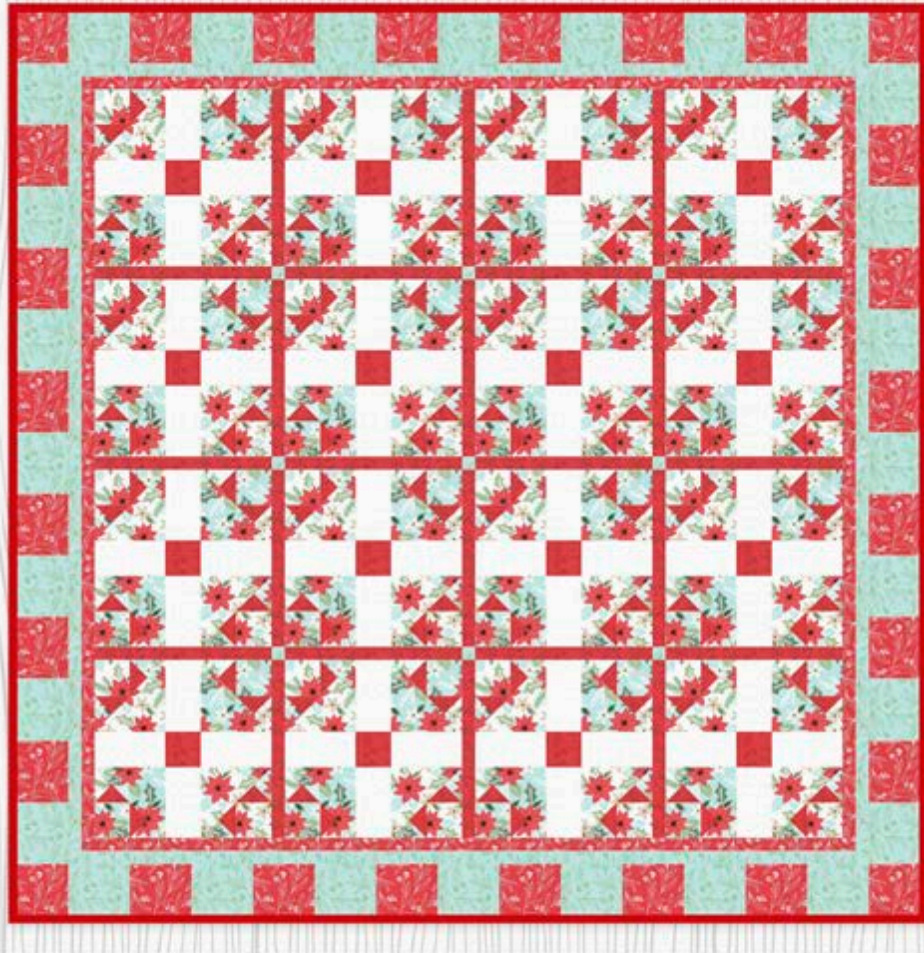
moda
UNITED NOTIONS

Fabric for our sample quilt generously supplied
by Moda Fabrics.



©2018 The Quilt Factory/Debra Grogan. All rights reserved. This pattern may not be reproduced or shared. Pattern may be used by one person for personal use or to make finished goods for charities, sale in retail and on-line shops or craft fairs, but may not be mass produced. We have made every attempt to provide you with accurate information, if you have any questions please email us at: Deb@thequiltfactory.com

Christmas Presence



A Simple Six Quilt Pattern
70 3/4 x 70 3/4 inches
Uses just 6 yards of Fabric!

#QF-1833



Christmas Presence



A Simple Six Pattern 70 3/4 x 70 3/4 inch Quilt

Fabric A Off white floral bouquet 1 yard
Block
Moda Little Tree 5091-11

Fabric B Aqua floral bouquet 1 yard
Block
Moda Little Tree 5091-16

Fabric C Red tonal spray 1 yard
Block, Sashing
Moda Little Tree 5092-13

Fabric D Aqua tonal spray 1 yard
Sashing posts, Border 2 and 3
Moda Little Tree 5092-16

Fabric E Red/off white tonal spray 1 yard
Border 1 and 3
Moda Little Tree 5092-23

Fabric F Off white tonal geometric 1 yard
Block
Moda Little Tree 5095-11

Binding 1/2 yard
Moda Bella Solid 9900-123 Betty's Red

Backing fabric of choice 4 1/4 yards 44 inches
or 2 1/8 yards 90 inch wide.

Batting 2 1/8 yards 90 inch wide or pack-
aged Full

Notions and Such: Matching thread for
seams.

Recommended Tools: Rotary cutter, mat
and ruler.

Uses just 6 yards of Fabric plus the binding!

the QUILT FACTORY

Pattern designs by Deb Grogan
Email: Deb@thequiltfactory.com
www.thequiltfactory.com

Christmas Presence QF-1833

moda
UNITED NOTIONS

Fabric for our sample quilt generously supplied
by Moda Fabrics.



©2019 The Quilt Factory/Debra Grogan. All rights reserved. This pattern may not be reproduced or shared. Pattern may be used by one person for personal use or to make finished goods for charities, sale in retail and on-line shops or craft fairs, but may not be mass produced. We have made every attempt to provide you with accurate information, if you have any questions please email us at: Deb@thequiltfactory.com

Whirl Wind



A Fab 5 Quilt Pattern
64 x 64 inches
#QF-1901



Whirl Wind



A Fab 5 Pattern 64 x 64 inch Quilt

Fabric A Tone on tone rouché floral 1 yard
Block
Moda Chafarcani 13850-18

Fabric B Tone on tone oyster floral 1 yard
Block
Moda Chafarcani 13850-20

Fabric C Red floral 1 yard
Block
Moda Chafarcani 13853-11

Fabric D Pink floral vine 1 yard
Block
Moda Chafarcani 13858-16

Fabric Cream with red floral vine 1 yard
Border
Moda Chafarcani 13858-19

Binding 1/2 yard
Moda Bella Solid 9900-17 Country Red

Backing fabric of choice 4 yards 44 inches
or 2 1/8 yards 90 inch wide.

Batting 2 1/8 yards 90 inch wide or
packaged Full

Notions and Such: Matching thread for
seams.

Recommended Tools: Rotary cutter,
mat and ruler.

Uses just 5 yards of Fabric plus the binding!

the QUILT FACTORY

Pattern designs by Deb Grogan
Email: Deb@thequiltfactory.com
www.thequiltfactory.com

Whirl Wind QF-1901

moda
UNITED NOTIONS

Fabric for our sample quilt generously supplied
by Moda Fabrics.



©2019 The Quilt Factory/Debra Grogan. All rights reserved. This pattern may not be reproduced or shared. Pattern may be used by one person for personal use or to make finished goods for charities, sale in retail and on-line shops or craft fairs, but may not be mass produced. We have made every attempt to provide you with accurate information, if you have any questions please email us at: Deb@thequiltfactory.com

OH BEAUTIFUL



A Fab 5 Quilt Pattern
62 x 62 inches
#QF-1902



OH BEAUTIFUL

A Fab 5 Pattern 62 x 62 inch Quilt



Fabric A Red on blue striped floral 1 yard
Border 3
Moda Northpoint Prints 14880-11

Fabric B Blue on blue striped floral 1 yard
Block
Moda Northpoint Prints 14880-12

Fabric C Tone on tone cream floral 1 yard
Block, Border 1
Moda Northpoint Prints 14880-21

Fabric D Gold on red floral 1 yard
Block
Moda Northpoint Prints 14883-19

Fabric Light blue dot 1 yard
Block, Border 2
Moda Northpoint Prints 14888-15

Binding 1/2 yard
Moda Bella Solid 9900-17 Country Red

Backing fabric of choice 4 yards 44 inches
or 2 yards 90 inch wide.

Batting 2 yards 90 inch wide or pack-
aged Full

Notions and Such: Matching thread for
seams.

Recommended Tools: Rotary cutter,
mat and ruler.

Uses just 5 yards of Fabric plus the binding!

the QUILT FACTORY

Pattern designs by Deb Grogan
Email: Deb@thequiltfactory.com
www.thequiltfactory.com

Oh Beautiful QF-1902

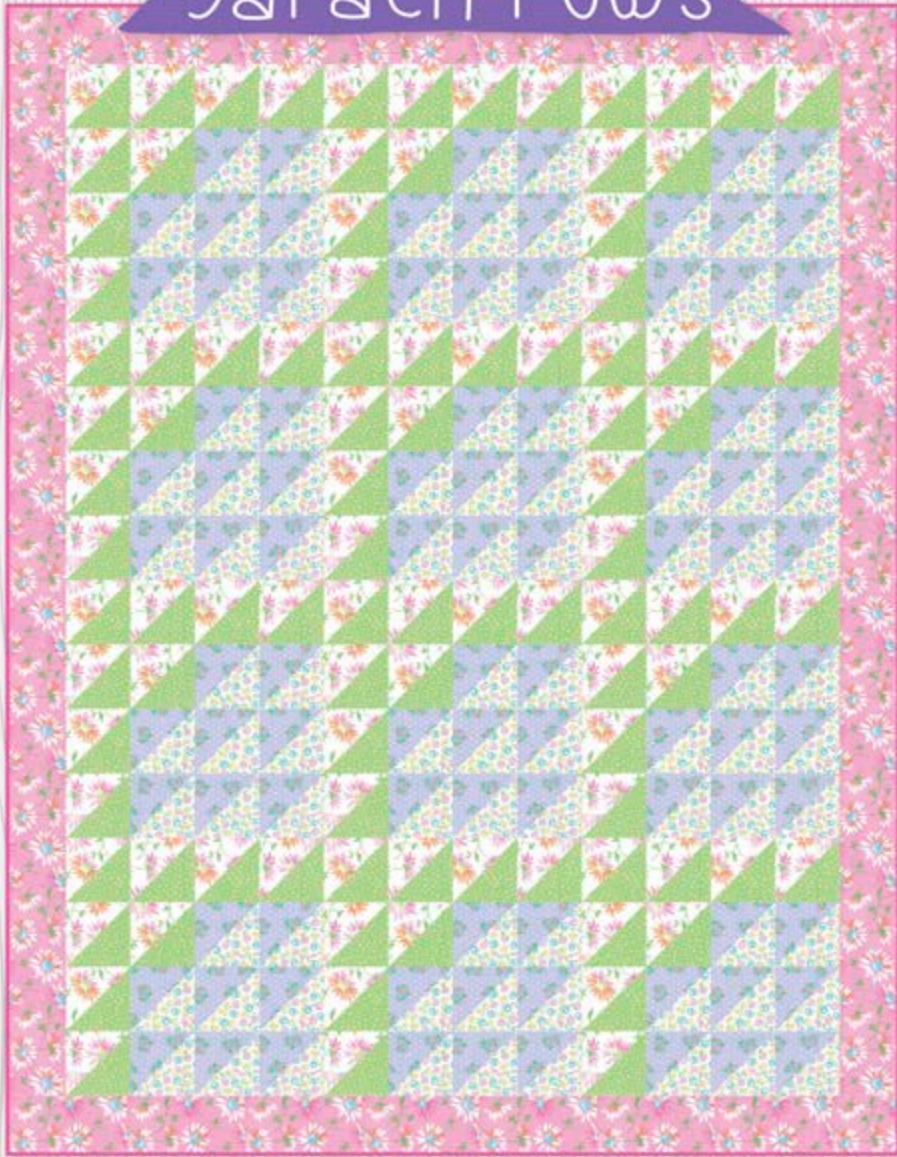
moda
UNITED NOTIONS

Fabric for our sample quilt generously supplied
by Moda Fabrics.



©2019 The Quilt Factory/Debra Grogan. All rights reserved. This pattern may not be reproduced or shared. Pattern may be used by one person for personal use or to make finished goods for charities, sale in retail and on-line shops or craft fairs, but may not be mass produced. We have made every attempt to provide you with accurate information, if you have any questions please email us at: Deb@thequiltfactory.com

garden rows



A 5 Yard Quilt Pattern
56 x 72 inches
#QF-1903



garden rows

A Fab 5 Pattern 56 x72 inch Quilt

Fabric A Pink on white floral 1 yard
Block
Moda Good Day! 22371-11

Fabric B White on pink floral 1 yard
Border
Moda Good Day! 22371-15

Fabric C Multi floral on white 1 yard
Block
Moda Good Day! 22372-11

Fabric D Flower bouquet on lavender dot 1 yard
Block
Moda Good Day! 22373-16

Fabric Light green dot 1 yard
Block
Moda Good Day! 22379-33

Binding 1/2 yard
Moda Bella Solid 9900-91 Peony

Backing fabric of choice 3 1/2 yards 44 inches or 1 3/4 yards 90 inch wide.

Batting 1 3/4 yards 90 inch wide or packaged Full

Notions and Such: Matching thread for seams.

Recommended Tools: Rotary cutter, mat and ruler.

Uses just 5 yards of Fabric plus the binding!

the QUILT FACTORY

Pattern designs by Deb Grogan
Email: Deb@thequiltfactory.com
www.thequiltfactory.com

Garden Rows QF-1903

moda
UNITED NOTIONS

Fabric for our sample quilt generously supplied by Moda Fabrics.



©2019 The Quilt Factory/Debra Grogan. All rights reserved. This pattern may not be reproduced or shared. Pattern may be used by one person for personal use or to make finished goods for charities, sale in retail and on-line shops or craft fairs, but may not be mass produced. We have made every attempt to provide you with accurate information, if you have any questions please email us at: Deb@thequiltfactory.com

A Tisket a Tasket



A Fab 5 Quilt Pattern
62 x 62 inches

#QF-1904



A Tisket a Tasket



A Fab 5 Pattern 62 x 62 inch Quilt

Fabric A Roses on ivory 1 yard
Border 3
Moda Harper's Garden 37570-11

Fabric B Floral on geranium 1 yard
Block
Moda Harper's Garden 37571-15

Fabric C Floral on green 1 yard
Block, Border 2
Moda Harper's Garden 37574-15

Fabric D Muli X's on cream 1 yard
Block
Moda Harper's Garden 37576-11

Fabric Multi geometric on cream 1 yard
Block, Border 1
Moda Harper's Garden 37577-11

Binding 1/2 yard
Moda Bella Solid 9900-258 Geranium

Backing fabric of choice 4 yards 44 inches or 2 yards 90 inch wide.

Batting 2 yards 90 inch wide or packaged Full

Notions and Such: Matching thread for seams.

Recommended Tools: Rotary cutter, mat and ruler.

Uses just 5 yards of Fabric plus the binding!

the QUILT FACTORY

Pattern designs by Deb Grogan
Email: Deb@thequiltfactory.com
www.thequiltfactory.com

A Tisket a Tasket QF-1904

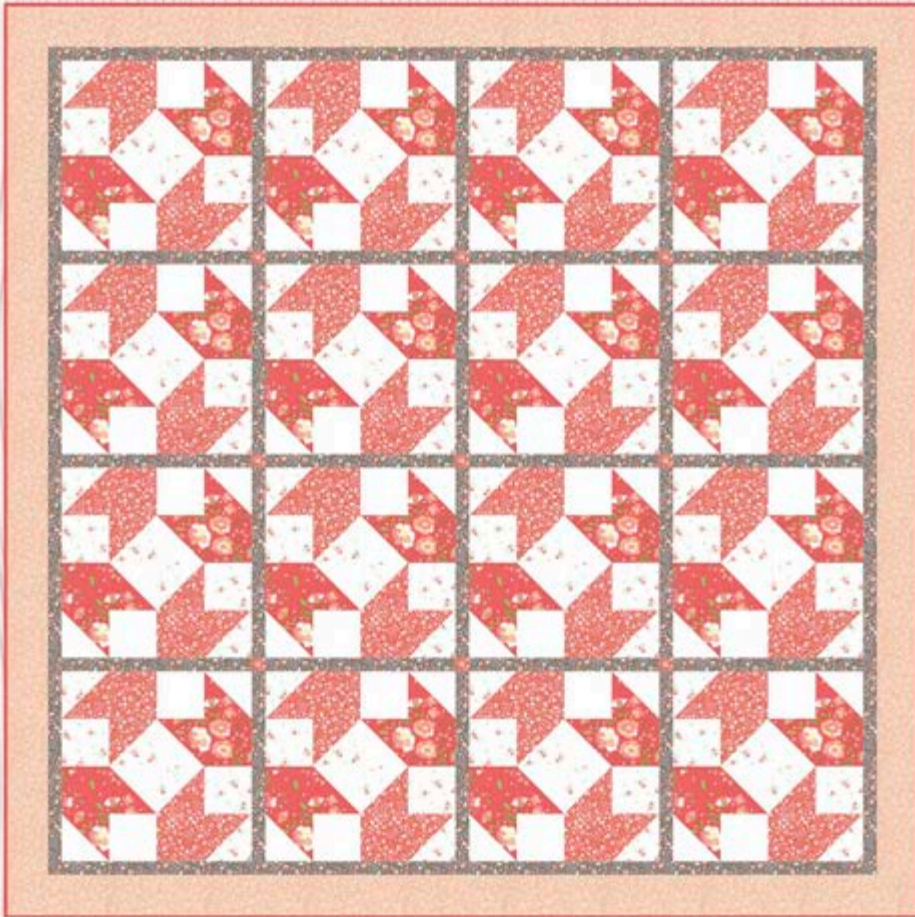
moda
UNITED NOTIONS

Fabric for our sample quilt generously supplied by Moda Fabrics.



©2019 The Quilt Factory/Debra Grogan. All rights reserved. This pattern may not be reproduced or shared. Pattern may be used by one person for personal use or to make finished goods for charities, sale in retail and on-line shops or craft fairs, but may not be mass produced. We have made every attempt to provide you with accurate information, if you have any questions please email us at: Deb@thequiltfactory.com

Tumbling Tulips



*A Simple Six Quilt Pattern
68 x 68 inches*

#QF-1905



Tumbling Tulips

A Simple Six Pattern 68 x 68 inch Quilt

Fabric A Floral on geranium 1 yard
Block
Moda Sugarcreek 29070-11

Fabric B Petite geranium floral on white 1 yard
Block
Moda Sugarcreek 29072-22

Fabric C Petite floral on geranium 1 yard
Block, Sashing posts
Moda Sugarcreek 29073-11

Fabric D Petite floral on grey 1 yard
Border 1, Sashing
Moda Sugarcreek 29073-20

Fabric White on light coral all over floral 1 yard
Border 2
Moda Sugarcreek 29075-13

Fabric White on white all over floral 1 yard
Block
Moda Sugarcreek 29075-31

Binding 1/2 yard
Moda Bella Solid 9900-258 Geranium

Backing fabric of choice 4 ¼ yards 44 inches or 2 ⅞ yards 90 inch wide.

Batting 2 ⅞ yards 90 inch wide or packaged Full

Notions and Such: Matching thread for seams.

Recommended Tools: Rotary cutter, mat and ruler.

Uses just 6 yards of Fabric plus the binding!

the QUILT FACTORY

Pattern designs by Deb Grogan
Email: Deb@thequiltfactory.com
www.thequiltfactory.com

Tumbling Tulips QF-1905

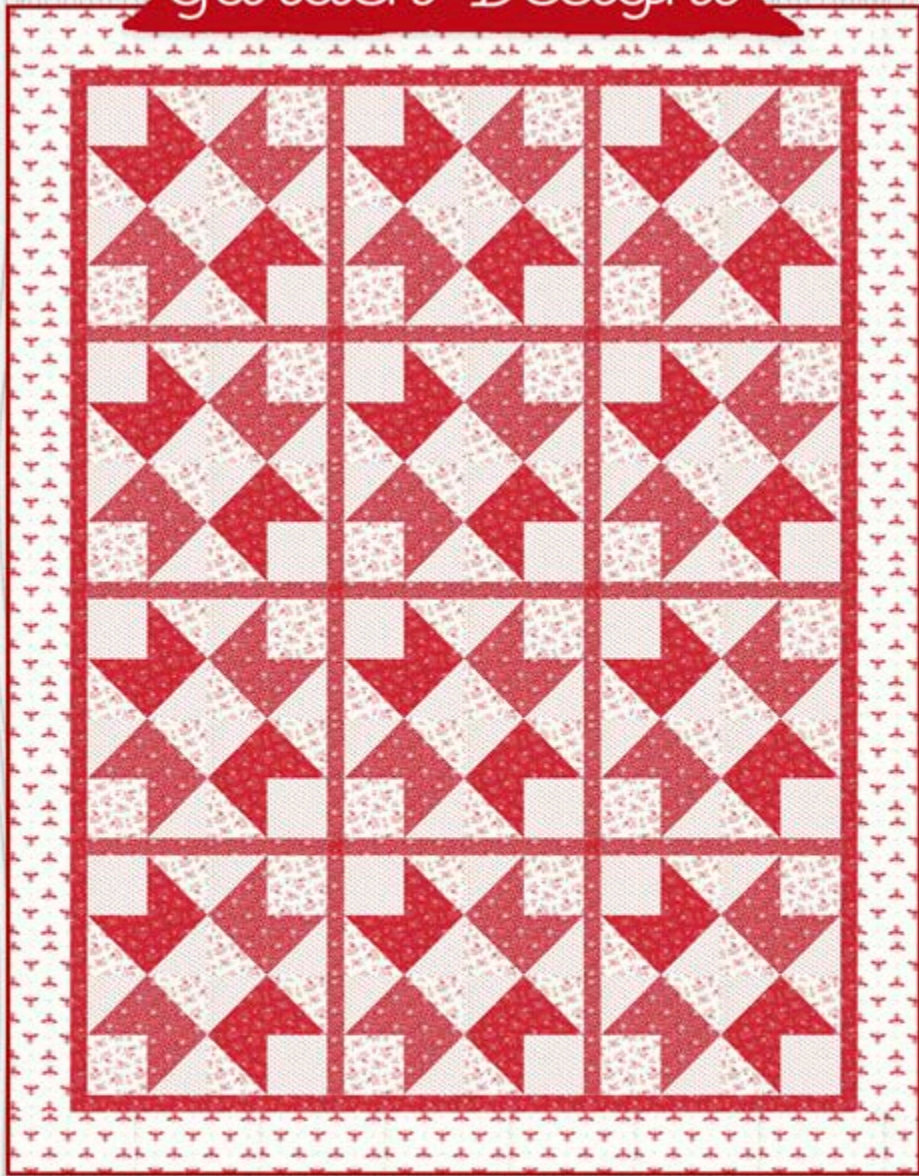
moda
UNITED NOTIONS

Fabric for our sample quilt generously supplied by Moda Fabrics.



©2019 The Quilt Factory/Debra Grogan. All rights reserved. This pattern may not be reproduced or shared. Pattern may be used by one person for personal use or to make finished goods for charities, sale in retail and on-line shops or craft fairs, but may not be mass produced. We have made every attempt to provide you with accurate information, if you have any questions please email us at: Deb@thequiltfactory.com

Garden Delight



A Fab 5 Quilt Pattern
54 x 69 inches
#QF-1906



Garden Delight

A Fab 5 54 x 69 inch Quilt

Fabric A Red bees on white 1 yard
Border 2
Moda My Redwork Garden 2951-13

Fabric B White vine on red 1 yard
Block, Sashing
Moda My Redwork Garden 2955-11

Fabric C White floral on red 1 yard
Sashing posts, Border 1, Block
Moda My Redwork Garden 2956-11

Fabric D Red floral on white 1 yard
Block
Moda My Redwork Garden 2956-13

Fabric E Red dot on white 1 yard
Block
Moda My Redwork Garden 2957-13

Binding 1/2 yard
Moda Bella Solid 9900-16 Christmas Red

Backing fabric of choice 3 1/2 yards 44 inches or 1 3/4 yards 90 inch wide.

Batting 1 3/4 yards 90 inch wide or packaged Full

Notions and Such: Matching thread for seams.

Recommended Tools: Rotary cutter, mat and ruler.

Uses just 5 yards of Fabric plus the binding!

the QUILT FACTORY

Pattern designs by Deb Grogan
Email: Deb@thequiltfactory.com
www.thequiltfactory.com

Garden Delight QF-1906

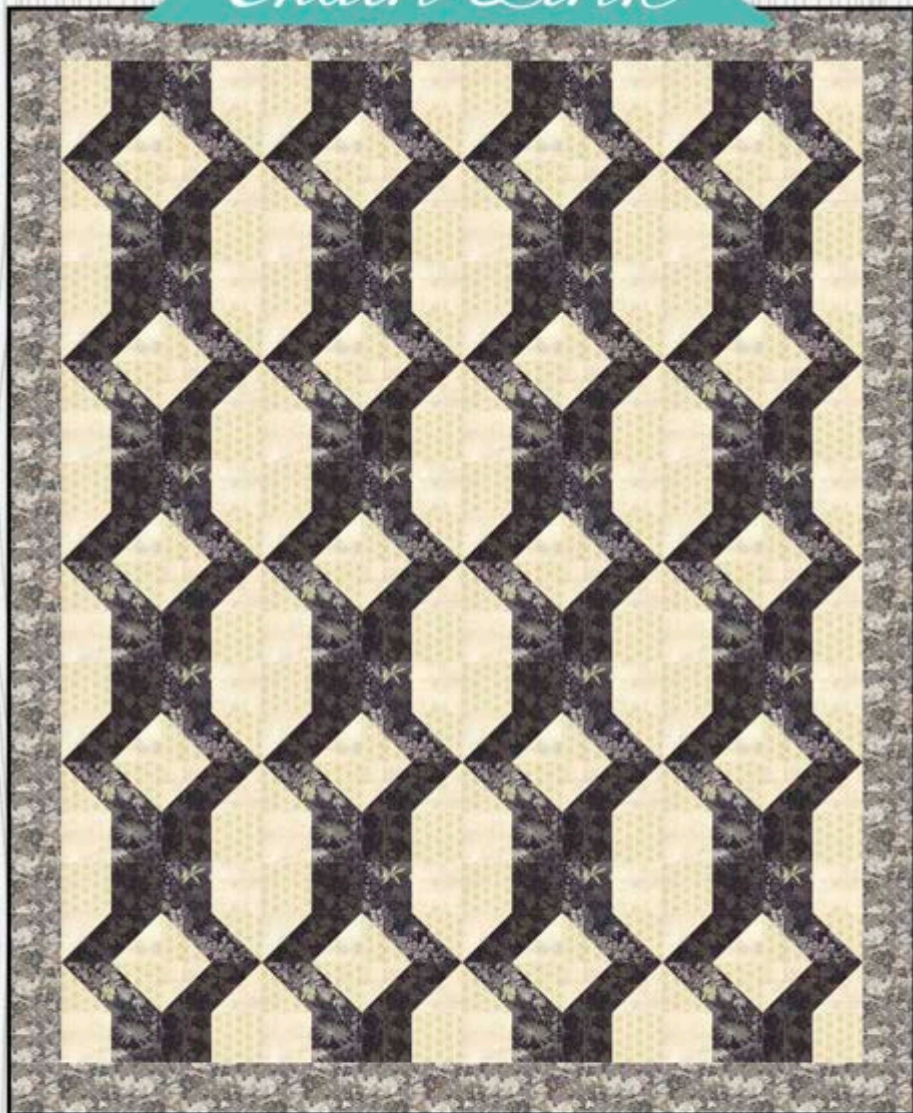
moda
UNITED NOTIONS

Fabric for our sample quilt generously supplied by Moda Fabrics.



©2019 The Quilt Factory/Debra Grogan. All rights reserved. This pattern may not be reproduced or shared. Pattern may be used by one person for personal use or to make finished goods for charities, sale in retail and on-line shops or craft fairs, but may not be mass produced. We have made every attempt to provide you with accurate information, if you have any questions please email us at: Deb@thequiltfactory.com

Chain Link



*A Fab 5 Quilt Pattern
56 x 68 inches*

#QF-1907



Chain Link

A Fab 5 Pattern
56 x 68 inch Quilt



Fabric A Black/grey tonal floral 1 yard
Block
Moda Stiletto 30610-11

Fabric B Light grey small floral 1 yard
Border
Moda Stiletto 30611-14

Fabric C Grey tonal floral 1 yard
Block
Moda Stiletto 30612-15

Fabric D Cream geometric 1 yard
Block
Moda Stiletto 30616-16

Fabric E Cream Grunge 1 yard
Block
Moda Grunge 30150-530

Binding 1/2 yard
Moda Bella Solid 9900-99 Black

Backing fabric of choice 3 1/2 yards 44 inches
or 1 3/4 yards 90 inch wide.

Batting 1 3/4 yards 90 inch wide or
packaged Twin

Notions and Such: Matching thread for
seams.

Recommended Tools: Rotary cutter, mat
and ruler.

Uses just 5 yards of Fabric plus the binding!

the QUILT FACTORY

Pattern designs by Deb Grogan
Email: Deb@thequiltfactory.com
www.thequiltfactory.com

Chain Link QF-1907

moda
UNITED NOTIONS

Fabric for our sample quilt generously supplied
by Moda Fabrics.



©2019 The Quilt Factory/Debra Grogan. All rights reserved. This pattern may not be reproduced or shared. Pattern may be used by one person for personal use or to make finished goods for charities, sale in retail and on-line shops or craft fairs, but may not be mass produced. We have made every attempt to provide you with accurate information, if you have any questions please email us at: Deb@thequiltfactory.com

Twirling Stars



*A Fab 5 Quilt Pattern
64 x 64 inches
#QF-1908*



Twirling Stars



A Fab 5 Pattern
64 x 64 inch Quilt

Fabric A Pink large floral 1 yard
Block
Moda Botanica 11840-14

Fabric B Pink line floral 1 yard
Block
Moda Botanica 11842-16

Fabric C Coral geometric 1 yard
Border
Moda Botanica 11844-13

Fabric D Cream tiny floral 1 yard
Block
Moda Botanica 11845-11

Fabric E Coral tiny floral 1 yard
Block
Moda Botanica 11845-14

Binding 1/2 yard
Moda Bella Solid 9900-258 Geranium

Backing fabric of choice 4 yards 44 inches
or 2 yards 90 inch wide.

Batting 2 yards 90 inch wide or
packaged Twin

Notions and Such: Matching thread for
seams.

Recommended Tools: Rotary cutter, mat
and ruler.

Uses just 5 yards of Fabric plus the binding!

the QUILT FACTORY

Pattern designs by Deb Grogan
Email: Deb@thequiltfactory.com
www.thequiltfactory.com

Twirling Stars QF-1908

moda
UNITED NOTIONS

Fabric for our sample quilt generously supplied
by Moda Fabrics.



©2019 The Quilt Factory/Debra Grogan. All rights reserved. This pattern may not be reproduced or shared. Pattern may be used by one person for personal use or to make finished goods for charities, sale in retail and on-line shops or craft fairs, but may not be mass produced. We have made every attempt to provide you with accurate information, if you have any questions please email us at: Deb@thequiltfactory.com

Around Town



A Simple Six Quilt Pattern
68 x 68 inches

#QF-1909



Around Town



A Simple Six Pattern
68 x 68 inch Quilt

Fabric A Cream large floral 1 yard
Blocks
Moda Harvest Road 5100-12

Fabric B Blue acorn and leaf 1 yard
Blocks
Moda Harvest Road 5101-16

Fabric C Indigo polkadot 1 yard
Border 2, sashing posts
Moda Harvest Road 5103-16

Fabric D Light Cream geometric 1 yard
Blocks
Moda Harvest Road 5104-11

Fabric E Light blue geometric 1 yard
Border 1, sashing
Moda Harvest Road 5104-15

Fabric F Light cream crosshatch 1 yard
Blocks
Moda Harvest Road 5105-11

Binding 1/2 yard
Moda Bella Solid 9900-48 Admiral Blue

Backing fabric of choice 4 1/4 yards 44 inches
or 2 1/8 yards 90 inch wide.

Batting 2 1/8 yards 90 inch wide or
packaged Full

Notions and Such: Matching thread for
seams.

Recommended Tools: Rotary cutter, mat
and ruler.

Uses just 6 yards of Fabric plus the binding!

the QUILT FACTORY

Pattern designs by Deb Grogan
Email: Deb@thequiltfactory.com
www.thequiltfactory.com

Around Town QF-1909

moda
UNITED NOTIONS

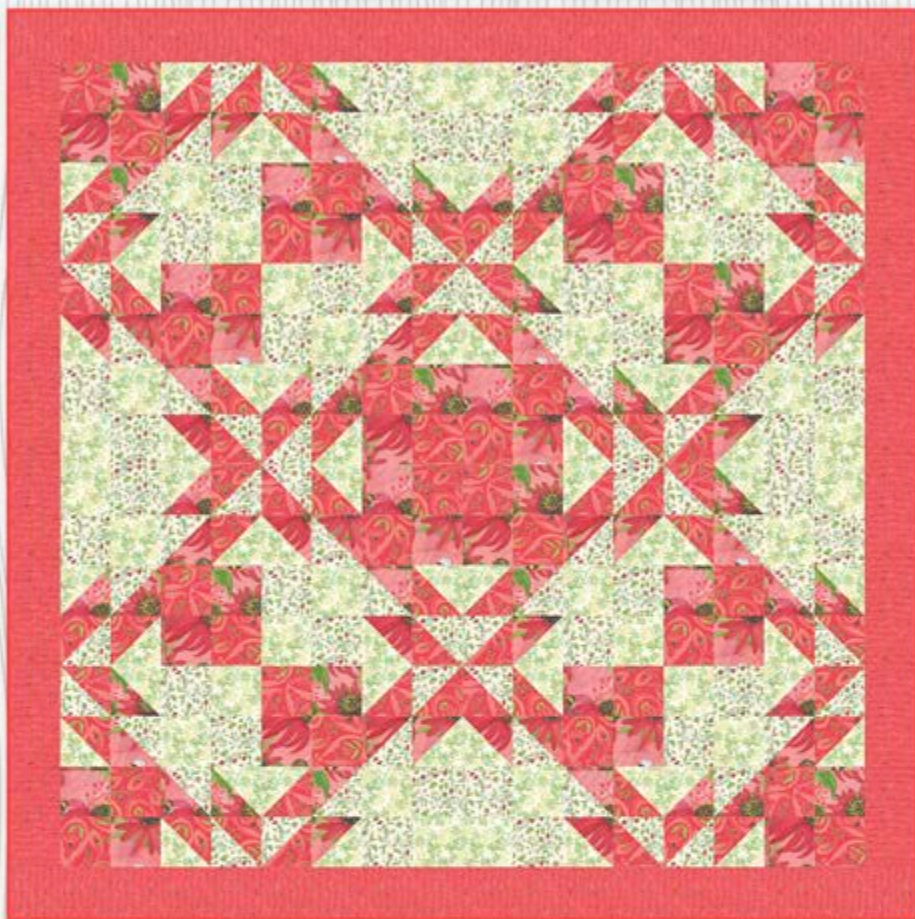
Fabric for our sample quilt generously supplied
by Moda Fabrics.



6 33632 99579 8

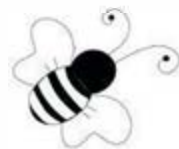
©2019 The Quilt Factory/Debra Grogan. All rights reserved. This pattern may not be reproduced or shared. Pattern may be used by one person for personal use or to make finished goods for charities, sale in retail and on-line shops or craft fairs, but may not be mass produced. We have made every attempt to provide you with accurate information, if you have any questions please email us at: Deb@thequiltfactory.com

Beehive



A Fab 5 64 x 64 inch Quilt Pattern

#QF-1910



Beehive

A Fab 5 Pattern
64 x 64 inch Quilt

Fabric A Pink coneflower 1 yard
Block
Moda Painted Meadow 48660-16

Fabric B Pink paisley 1 yard
Block
Moda Painted Meadow 48661-18

Fabric C Cream floral with bees 1 yard
Block
Moda Painted Meadow 48662-11

Fabric D Cream with green sprigs 1 yard
Block
Moda Painted Meadow 48663-11

Fabric E Coral stripes 1 yard
Border
Moda Painted Meadow 48664-17

Binding 1/2 yard
Moda Bella Solid 9900-143 Popsicle

Backing fabric of choice 3 7/8 yards 44 inches or 2 yards 90 inch wide.

Batting 2 yards 90 inch wide or packaged Twin

Notions and Such: Matching thread for seams.

Recommended Tools: Rotary cutter, mat and ruler.



Uses just 5 yards of Fabric plus the binding!

the QUILT FACTORY

Pattern designs by Deb Grogan
Email: Deb@thequiltfactory.com
www.thequiltfactory.com

Beehive QF-1910

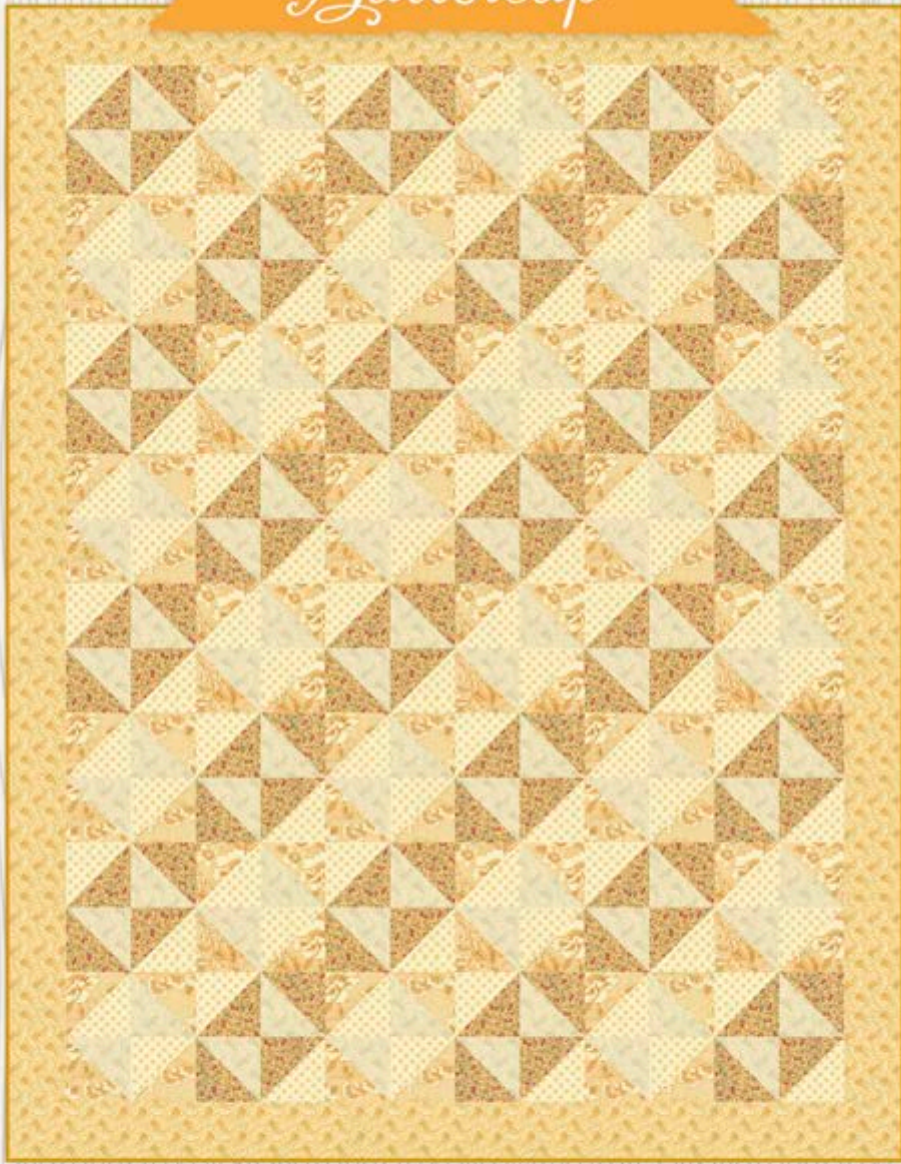


moda
UNITED NOTIONS

Fabric for our sample quilt generously supplied by Moda Fabrics.

©2019 The Quilt Factory/Debra Grogan. All rights reserved. This pattern may not be reproduced or shared. Pattern may be used by one person for personal use or to make finished goods for charities, sale in retail and on-line shops or craft fairs, but may not be mass produced. We have made every attempt to provide you with accurate information, if you have any questions please email us at: Deb@thequiltfactory.com

Buttercup



A Fab 5 Quilt Pattern
56 x 72 inches

#QF-1911



Buttercup

A Fab 5 Pattern
56 x 72 inch Quilt



Fabric A Yellow floral 1 yard
Block
Moda Sarah's Story 31590-12

Fabric B Yellow small floral 1 yard
Block
Moda Sarah's Story 31591-12

Fabric C Cream grapes 1 yard
Block
Moda Sarah's Story 31594-11

Fabric D Yellow grapes 1 yard
Border
Moda Sarah's Story 31594-12

Fabric E Cream with yellow sprigs 1 yard
Block
Moda Sarah's Story 31597-11

Binding 1/2 yard
Moda Bella Solid 9900-232 Saffron

Backing fabric of choice 3 1/2 yards 44 inches
or 1 3/4 yards 90 inch wide.

Batting 1 3/4 yards 90 inch wide or
packaged Twin

Notions and Such: Matching thread for
seams.

Recommended Tools: Rotary cutter, mat
and ruler.

Uses just 5 yards of Fabric plus the binding!

the QUILT FACTORY

Pattern designs by Deb Grogan
Email: Deb@thequiltfactory.com
www.thequiltfactory.com

Buttercup QF-1911

moda
UNITED NOTIONS

Fabric for our sample quilt generously supplied
by Moda Fabrics.



©2019 The Quilt Factory/Debra Grogan. All rights reserved. This pattern may not be reproduced or shared. Pattern may be used by one person for personal use or to make finished goods for charities, sale in retail and on-line shops or craft fairs, but may not be mass produced. We have made every attempt to provide you with accurate information, if you have any questions please email us at: Deb@thequiltfactory.com

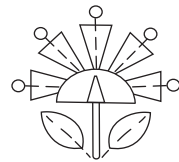
Garden Window



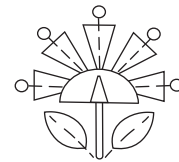
A Simple Six Quilt Pattern

66 x 66 inches

#QF-1912



Garden Window



A Simple Six Pattern
66 x 66 inch Quilt

Backing fabric of choice 4 yards 44 inches
or 2 yards 90 inch wide.

Batting 2 yards 90 inch wide or
packaged Twin

Notions and Such: Matching thread for
seams.

Recommended Tools: Rotary cutter, mat
and ruler.

Fabric A Cream large floral 1 yard
Block
Moda Goldenrod 36050-11

Fabric B Aqua large floral 1 yard
Block
Moda Goldenrod 36050-13

Fabric C Aqua floral 1 yard
Block
Moda Goldenrod 36051-13

Fabric D Coral stripe 1 yard
Border
Moda Goldenrod 36053-16

Fabric E Aqua/white small floral 1 yard
Block
Moda Goldenrod 36056-13

Fabric F Coral tonal small floral 1 yard
Block
Moda Goldenrod 36056-16

Binding 1/2 yard
Moda Bella Solid 9900-209 Clementine

Uses just 6 yards of Fabric plus the binding!

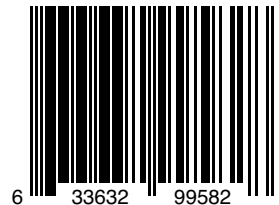
the QUILT FACTORY

Pattern designs by Deb Grogan
Email: Deb@thequiltfactory.com
www.thequiltfactory.com

Garden Window QF-1912

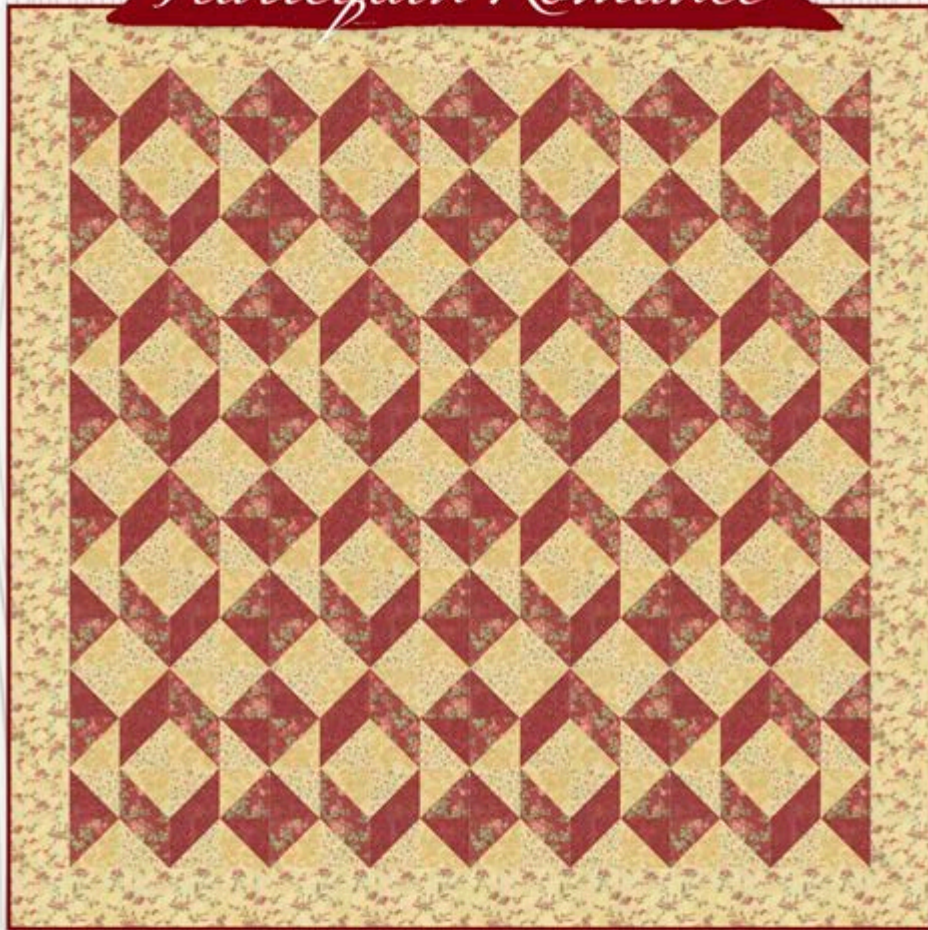
moda
UNITED NOTIONS

Fabric for our sample quilt generously supplied
by Moda Fabrics.



©2019 The Quilt Factory/Debra Grogan. All rights reserved. This pattern may not be reproduced or shared. Pattern may be used by one person for personal use or to make finished goods for charities, sale in retail and on-line shops or craft fairs, but may not be mass produced. We have made every attempt to provide you with accurate information, if you have any questions please email us at: Deb@thequiltfactory.com

Harlequin Romance



A Fab 5 Quilt Pattern
64 x 64 inches

#QF-1913



Harlequin Romance

A Fab 5 Pattern
64 x 64 inch Quilt



Fabric A Red tonal floral 1 yard
Block
Moda Memoirs 44211-15

Fabric B Cream tonal floral 1 yard
Block
Moda Memoirs 44211-17

Fabric C Cream/red small floral 1 yard
Border
Moda Memoirs 44213-17

Fabric D Red medium floral 1 yard
Block
Moda Memoirs 44214-15

Fabric E Cream tiny floral 1 yard
Block
Moda Memoirs 44215-16

Binding 1/2 yard
Moda Bella Solid 9900-18 Burgundy

Backing fabric of choice 4 yards 44 inches
or 2 yards 90 inch wide.

Batting 2 yards 90 inch wide or
packaged Twin

Notions and Such: Matching thread for
seams.

Recommended Tools: Rotary cutter, mat
and ruler.

Uses just 5 yards of Fabric plus the binding!

the QUILT FACTORY

Pattern designs by Deb Grogan
Email: Deb@thequiltfactory.com
www.thequiltfactory.com

Harlequin Romance QF-1913

moda
UNITED NOTIONS

Fabric for our sample quilt generously supplied
by Moda Fabrics.



©2019 The Quilt Factory/Debra Grogan. All rights reserved. This pattern may not be reproduced or shared. Pattern may be used by one person for personal use or to make finished goods for charities, sale in retail and on-line shops or craft fairs, but may not be mass produced. We have made every attempt to provide you with accurate information, if you have any questions please email us at: Deb@thequiltfactory.com

Waiting for Spring



A Simple Six Quilt Pattern
69 x 69 inches

#QF-1914



Waiting for Spring

A Simple Six Pattern
69 x 69 inch Quilt

Fabric A Turquoise floral 1 yard
Block
Moda Last Bloom 18000-13

Fabric B Cream small floral 1 yard
Block
Moda Last Bloom 18002-11

Fabric C Cream geometric 1 yard
Block
Moda Last Bloom 18004-11

Fabric D Turquoise stars 1 yard
Border 1, sashing
Moda Last Bloom 18005-22

Fabric E Cream stars 1 yard
Block
Moda Last Bloom 18005-31

Fabric F Cream stripe 1 yard
Border 2, sashing posts
Moda Last Bloom 18006-11

Binding 5/8 yard
Moda Bella Solid 9900-109 Pond

Backing fabric of choice 4 ½ yards 44 inches
or 2 ¼ yards 90 inch wide.

Batting 2 ¼ yards 90 inch wide or
packaged Full

Notions and Such: Matching thread for
seams.

Recommended Tools: Rotary cutter, mat
and ruler.

Uses just 6 yards of Fabric plus the binding!

the QUILT FACTORY

Pattern designs by Deb Grogan
Email: Deb@thequiltfactory.com
www.thequiltfactory.com

Waiting for Spring QF-1914

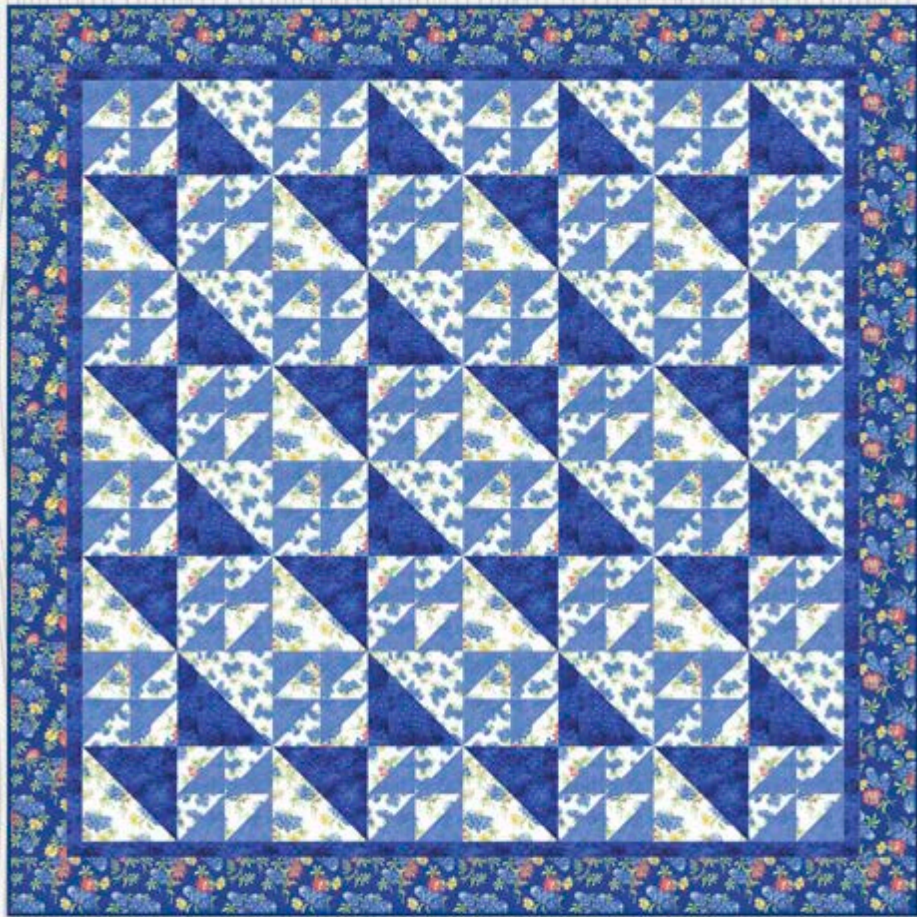
moda
UNITED NOTIONS

Fabric for our sample quilt generously supplied
by Moda Fabrics.



©2019 The Quilt Factory/Debra Grogan. All rights reserved. This pattern may not be reproduced or shared. Pattern may be used by one person for personal use or to make finished goods for charities, sale in retail and on-line shops or craft fairs, but may not be mass produced. We have made every attempt to provide you with accurate information, if you have any questions please email us at: Deb@thequiltfactory.com

Blue Crush



A Fab 5 Quilt Pattern

59 x 59

#QF-1915



Blue Crush



A Fab 5 Pattern 59 x 59 inch Quilt

Fabric A Ivory large multi floral 1 yard
Block
Moda Fields of Blue 33452-11

Fabric B Royal blue large multi floral 1 yard
Border 2
Moda Fields of Blue 33452-14

Fabric C Ivory with bluebonnets 1 yard
Block
Moda Fields of Blue 33453-11

Fabric D Watercolor dots light blue 1 yard
Block
Moda Fields of Blue 33454-12

Fabric E Watercolor petals royal blue 1 yard
Block, Border 1
Moda Fields of Blue 33455-15

Binding 1/2 yard
Moda Bella Solid 9900-396

Backing fabric of choice 3 1/2 yards 44 inches
or 1 3/4 yards 90 inch wide.

Batting 2 yards 90 inch wide or packaged
Twin

Notions and Such: Matching thread for
seams.

Recommended Tools: Rotary cutter, mat
and ruler.

Uses just 5 yards of Fabric plus the binding!

the QUILT FACTORY

Pattern designs by Deb Grogan
Email: Deb@thequiltfactory.com
www.thequiltfactory.com

Fab 5 Blue Crush QF-1915

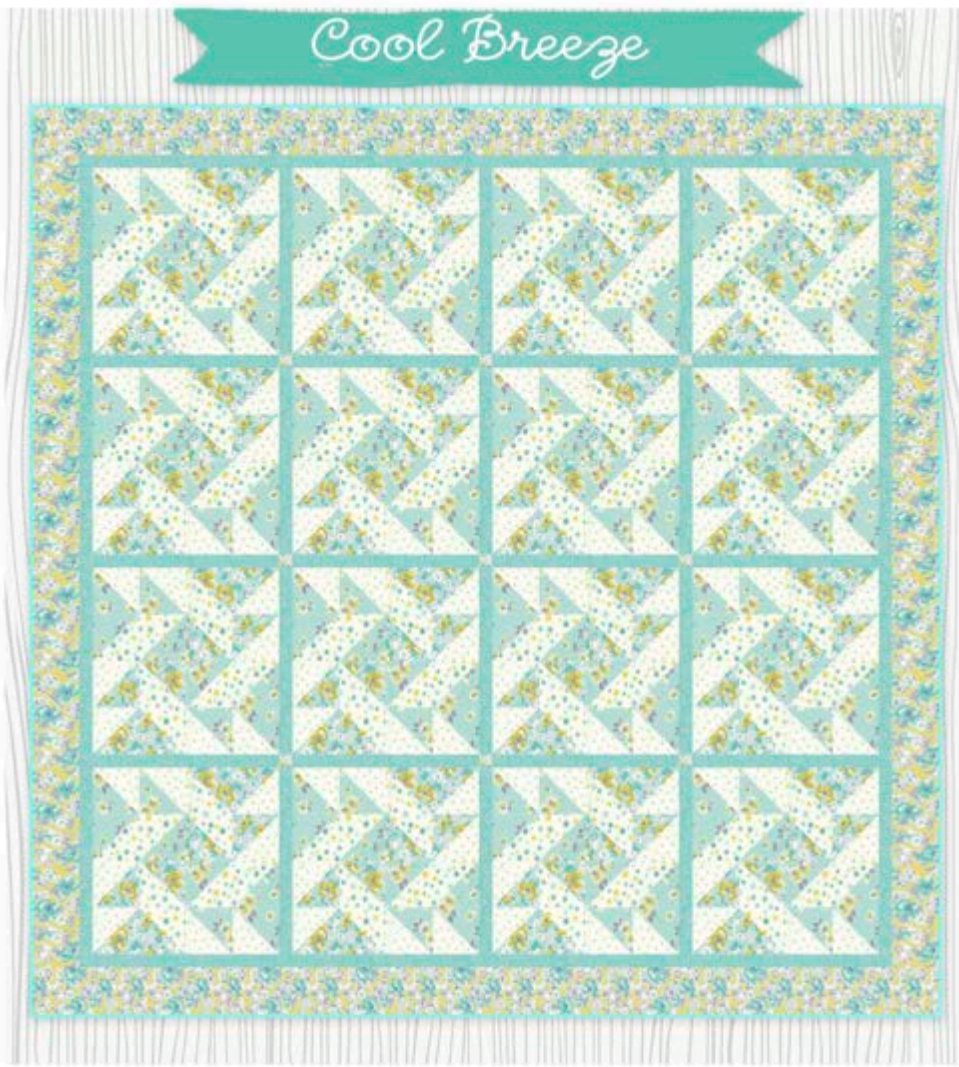
moda
UNITED NOTIONS

Fabric for our sample quilt generously
supplied by Moda Fabrics.



©2019 The Quilt Factory/Debra Grogan. All rights reserved. This pattern may not be reproduced or shared. Pattern may be used by one person for personal use or to make finished goods for charities, sale in retail and on-line shops or craft fairs, but may not be mass produced. We have made every attempt to provide you with accurate information, if you have any questions please email us at: Deb@thequiltfactory.com

Cool Breeze



A Simple Six Quilt Pattern
69 x 69

#QF-1916



Cool Breeze



A Simple Six Pattern 69 x 69 inch Quilt

Fabric A Large multi floral yellow 1 yard
Border 2, sashing posts
Moda Flour Garden 23320-13

Fabric B Large multi floral lt. turquoise 1 yard
Block
Moda Flour Garden 23320-14

Fabric C Flower spray lt. turquoise 1 yard
Block
Moda Flour Garden 23321-14

Fabric D Geometric on cream 1 yard
Block
Moda Flour Garden 23322-11

Fabric E Turquoise tonal daisy 1 yard
Border 1, sashing
Moda Flour Garden 23325-15

Fabric E Yellow flower bud on cream 1 yard
Block
Moda Flour Garden 23326-11

Binding 1/2 yard
Moda Bella Solid 9900-85 Robins Egg

Backing fabric of choice 4 1/4 yards 44 inches or 2 1/4 yards 90 inch wide.

Batting 2 1/4 yards 90 inch wide or packaged Full

Notions and Such: Matching thread for seams.

Recommended Tools: Rotary cutter, mat and ruler.

Uses just 6 yards of Fabric plus the binding!

the QUILT FACTORY

Pattern designs by Deb Grogan
Email: Deb@thequiltfactory.com
www.thequiltfactory.com

Cool Breeze QF-1916

moda
UNITED NOTIONS

Fabric for our sample quilt generously supplied
by Moda Fabrics.



©2019 The Quilt Factory/Debra Grogan. All rights reserved. This pattern may not be reproduced or shared. Pattern may be used by one person for personal use or to make finished goods for charities, sale in retail and on-line shops or craft fairs, but may not be mass produced. We have made every attempt to provide you with accurate information, if you have any questions please email us at: Deb@thequiltfactory.com

Just a little FYI about ordering from us

- All first orders are credit card . You may fill out a credit sheet for Net30 terms, which is available on my web-site under the Wholesale tab. Invoices for credit card payments are sent via Square for safely paying on-line. We do not have access to or store your credit card information.
- We do not have a minimum per-say but request patterns be ordered 4 per style.
- We do not offer free shipping but will add a free pattern or 2 to offset cost on orders of \$150 or more. We usually ship via the USPS as it is most cost effective. We charge actual shipping only.
- Wholesale patterns listed in this PDF are \$5. We charge \$10 retail across all our platforms.
- We do all our own printing in house so depending on what is going on in the studio, most orders can go out within a few days.
- The best way to place an order is to email me direct at deb@thequiltfactory.com

Thank you! We look forward to working with you.....Deb

ALL IMAGES AND DESIGNS IN THIS PDF ARE COPYRIGHT DEB GROGAN/THE QUILT FACTORY